

EX 140-2C CENTR. FAN (ATEX)

Item no. 1559

Document type: **Product card**
Document date: **2016-10-12**

Description

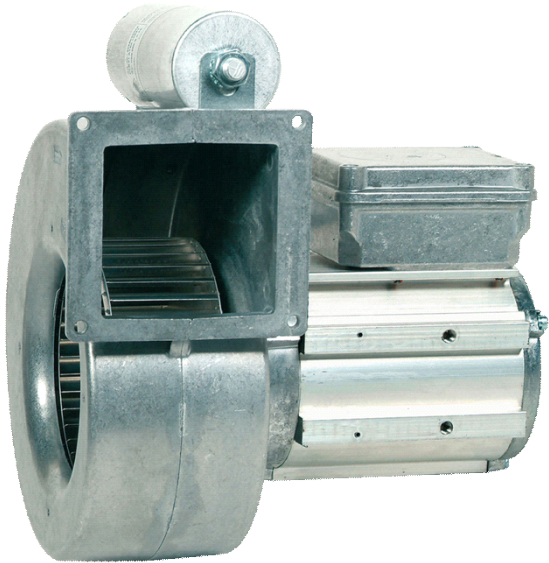
- Certified according to ATEX
- Suitable for use in battery-charging rooms, fume cupboards and similar environments
- Compact design

EX fans can be installed in any position, and their compact design makes them easy to install.

These fans are powered by specially manufactured EXmotors, and have impellers with forward-curved blades. The fan casing is cast in silumin, and the impeller is manufactured from aluminium.

These single-phase fans have a capacitor enclosed in sand, which is approved for EX certification. Explosion proof versions comply with EN 50014, EN 50017, EN 50019, EN 1127- and EN 13463-1. Improved safety in accordance with EEx eq II T3.

NOTE! EX 140-180 fans are not speed controllable. Motorprotection type MSEX, has to be used in accordance to ATEX certificate

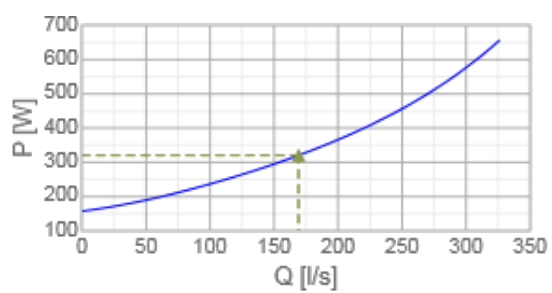
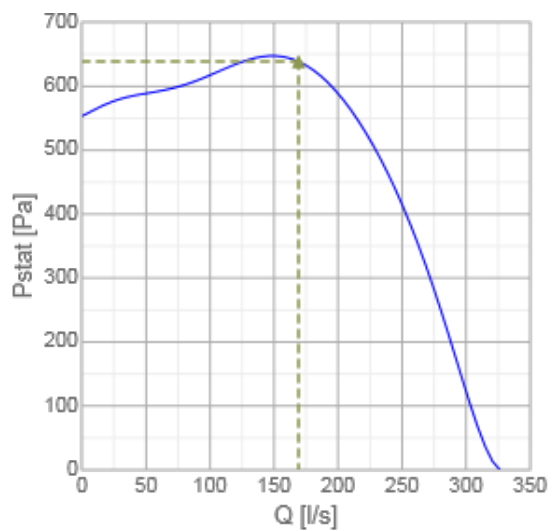


Technical parameters

Nominal data		
Frequency	50	Hz
Voltage	230	V
Phase	1	~
Input power (P1)	674	W
Current	3	A
Max. airflow	326	l/s
R.p.m.	2885	r.p.m.
Capacitor	25	µF
Weight	9,3	kg
Temperature data		
Temperature range, ambient and duct	-20-40	°C
Sound data		
Sound pressure level at 3 m	49,1	dB(A)
Protection / Classification		
Insulation class	F	
Enclosure class, motor	IP54	IP
Certificate	SP03ATEX3101X	
Explosion proof	II 2G EEx eq II T3	

Diagrams

Diagrams



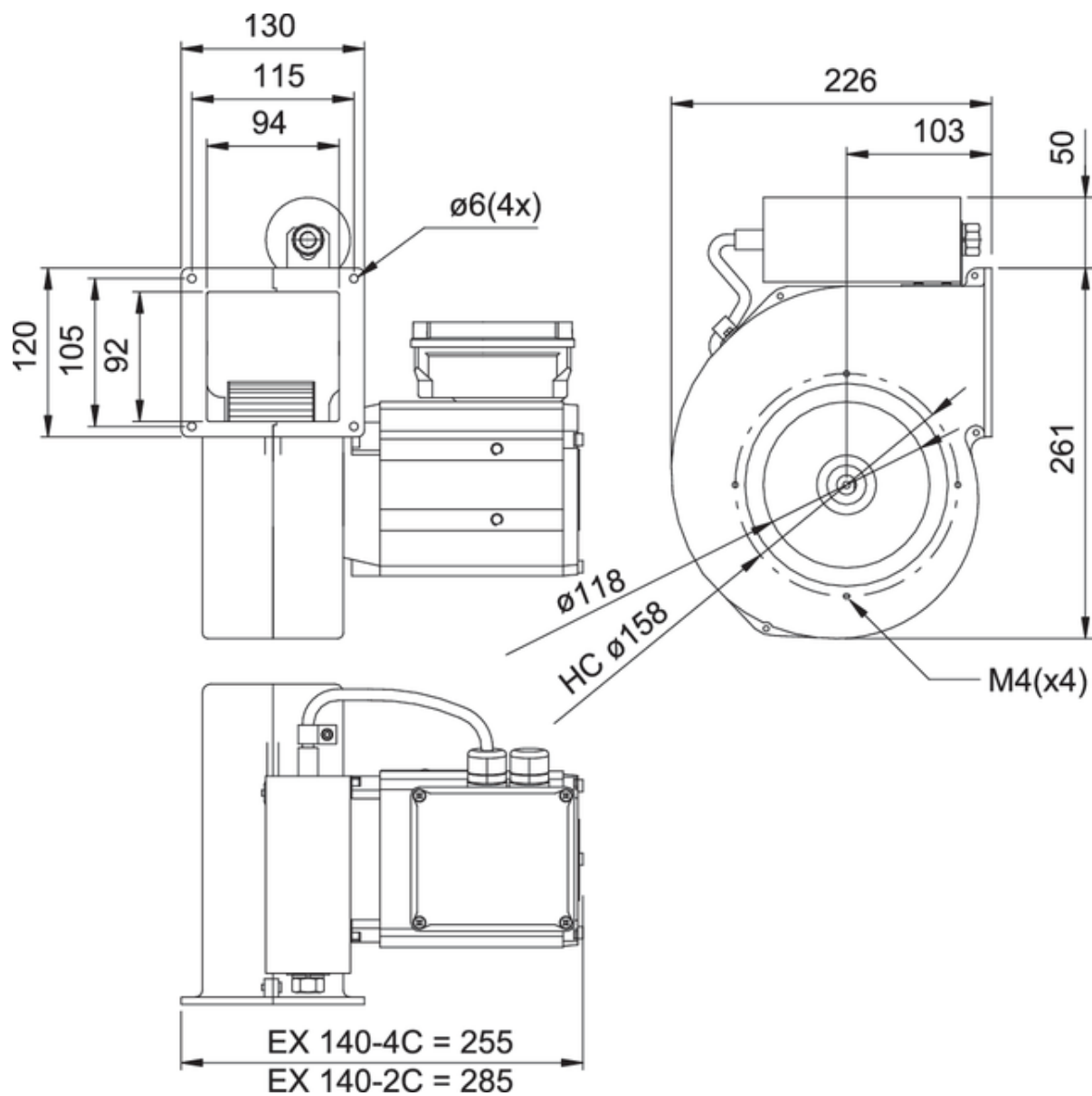
Hydraulic data

	Working point						
	Q [l/s]	Ps [Pa]	P [W]	n [r.p.m.]	I [A]	SFP [kW/m³/s]	U [V]
Max efficiency	169	639	320	2959	1,5	1,89	230

Acoustic data

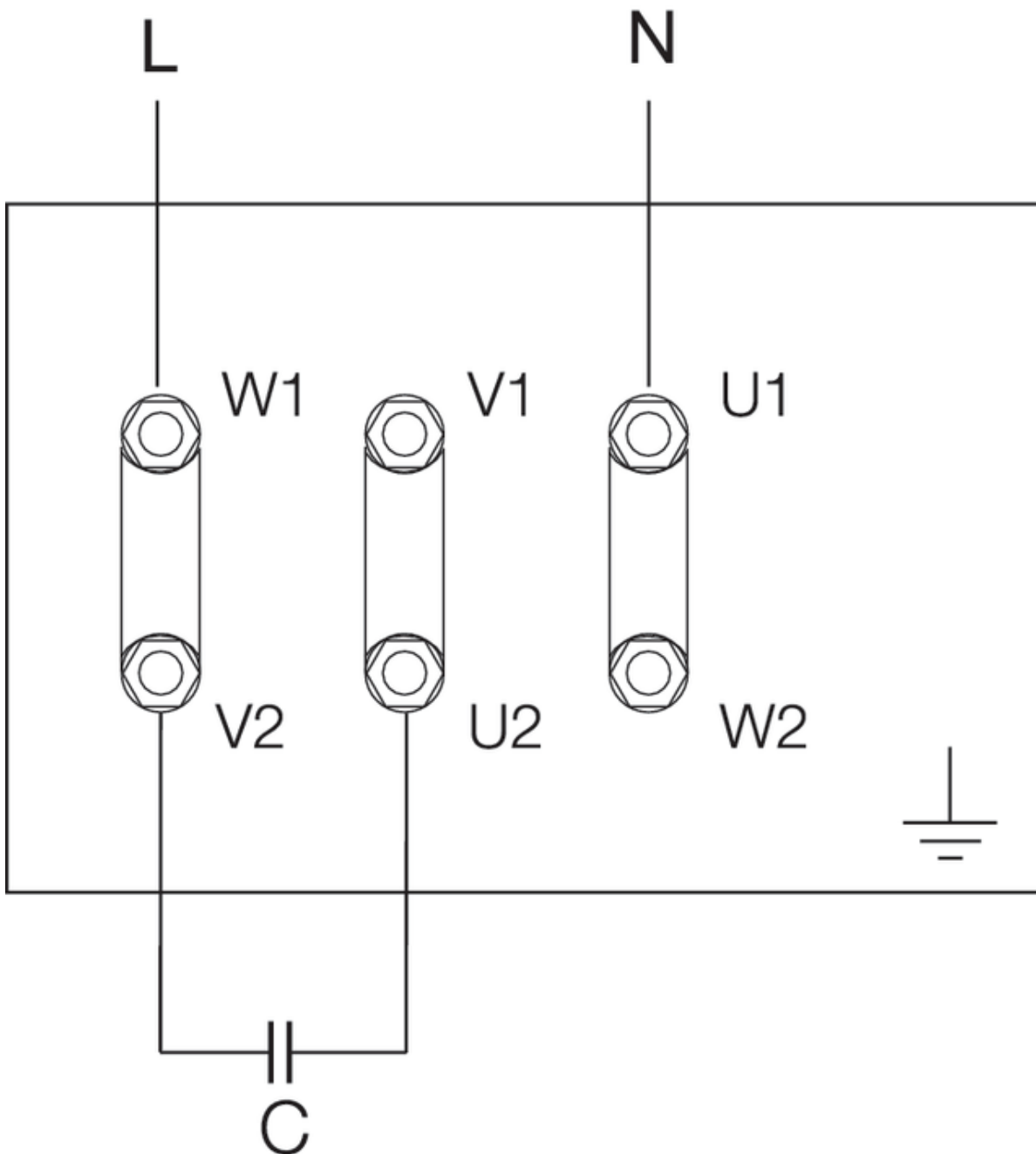
Sound power level		63	125	250	500	1k	2k	4k	8k	Tot
Inlet	dB(A)	34	52	62	62	67	69	64	58	73
Outlet	dB(A)	63	66	72	74	73	73	66	62	80
Surrounding	dB(A)	22	34	42	50	49	53	48	44	57

Dimensions



Wiring

230V 1~



Accessories

Electric accessories

MSEX 2,5-4,0 PKZM motor protec (5369)
MSEX-K enclosure (5692)

Accessories

US 1412 Exhaust sleeve (5125)
IS 1416 Accessories kit (4025)
US 1412 Accessories kit (4033)
FKX 140/180 Accessories kit (4035)
IS 1412 Accessories kit (4022)
IS 1412 Circ.connec.Ø125 (200102)
IS 1416/1816 Circ.connec.Ø160 (200103)
FKX 140/180 Bracket EX-fan (1556)
Connect. accessories EX140-125 (33795)
Connect. accessories EX140-160 (33796)

Specification text

The box is made out of silumin. The fan has a compact installation size for an easy assembling. Applicable in battery rooms and storage areas and similar uses. The fan has a radial impeller with forwards- curved blades made out of aluminium. The actuation is carried out by an maintenance-free, explosion- proofed, not speed- controllable motor, witch is situated outside the air flow. Impeller according to VDI 2060, quality class Q 6,3 and dynamically weigh heavy in two levels. Tested according to ATEX guideline 94-9-EG. For the extraction of potentially explosive atmosphere of zone 1, category 2G and zone 2, category 3G. The fans are in zone 1, 2 and for the temperature levels T1, T2 and T3 applicable. The explosion group is "e" elevated safety Eexe II, T3. Appurtenances for the Ex- fan is available on enquiry. ATEX- approval number SP03 ATEX 3101x.

Documentation



ATEX Fans Operation and maintenance instructions 209009 CE _A005_A5.pdf (1,58MB)



Certificate EX 140_180 SP03ATEX3101X+T1+T2+T3+T4.pdf (4,29MB)



SP15ATEX7167 PQAN_160203.pdf (418,93kB)