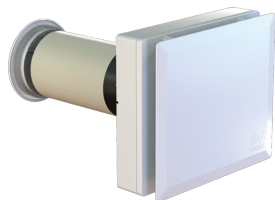


Technical Data Sheet

CODE 12434

VORT HRW 30 MONO EVO

Decentralised heat recovery units



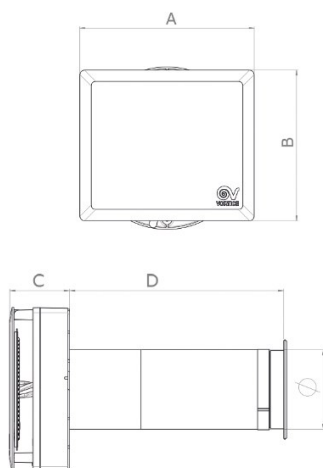
Certifications



TECHNICAL AND PERFORMANCE DATA

Absorbed Current max (A)	0,04	Max delivery at max speed (m ³ /h)	38
Absorbed Power max (W)	4	Maximum thermal efficiency (%)	90
Filter class	ISOCoarse 65%	Potenza sonora Lw [dB (A)] - max vel	66,8
Frequency (Hz)	50-60	Potenza sonora Lw [dB (A)] - min vel	36,6
Insulation Class	II°	Pressione sonora Lp [dB (A)] 3m - med vel	32,0
Max ambient temperature for continuous operation (°C)	30	Pressure - 1st speed (mmH2O)	1
Nominal Diameter (mm)	100	Pressure - 1st speed (Pa)	10
Voltage (V)	220-240	Pressure max - max speed (mmH2O)	13,7
Weight (Kg)	3,10	Pressure max - max speed (Pa)	130
Delivery 1st speed (l/s)	1,7	Sound power Lw [dB(A)] - mid speed	49,5
Delivery 1st speed (m ³ /h)	6	Sound pressure level Lp [dB (A)] 3m - max speed	49,2
Max delivery at max speed (l/s)	10,5	Sound pressure level Lp [dB (A)] 3m - min speed	19,1

DIMENSIONS



Diametro ϕ (mm)	97
Size A (mm)	231
Size B (mm)	200
Size C (mm)	73
Size D (mm)	260

PER INFORMAZIONI:

Servizio al Cliente: tel +39 02 90699395 premendo 1 dopo messaggio registrato (consulenza su prodotti e impianti)

Pre & Post Vendita: fax +39 02 90699302

Email prevendita: prevendita@vortice-italy.com

Technical Data Sheet

CODE 12434

VORT HRW 30 MONO EVO

Decentralised heat recovery units



DESCRIPTION

ACCESSORIES



**TUBO PVC
D.100 L=700
(HRW 30)**

Code 21879



MWS D.100

Code 21883



WA Ø 100

Code 21884



**KIT FTR ISO
COARSE 65%
(G3) D.98X10**

Code 21891

PER INFORMAZIONI:

Servizio al Cliente: tel +39 02 90699395 premendo 1 dopo messaggio registrato (consulenza su prodotti e impianti)

Pre & Post Vendita: fax +39 02 90699302

Email prevendita: prevendita@vortice-italy.com