

EL 250 D2 01

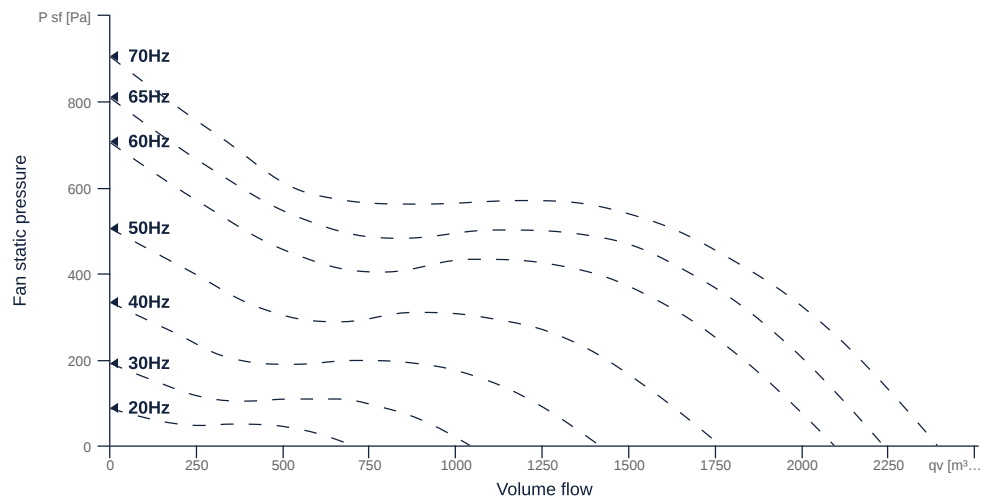
118980

- Innovative, high-efficiency diagonal fan
- The benchmark for efficiency since 2007
- Optimally tuned, CFD-optimized aerodynamics
- Efficient IE3 motor, frequency controllable
- Conveyed medium temperature up to 50 °C in continuous operation
- Housing made of galvanized steel sheet
- Attention! See note in the operating manual at FU-operation



MAP

Name	Value	Unit
Volume flow	0	m³/h
Pressure	0	Pa



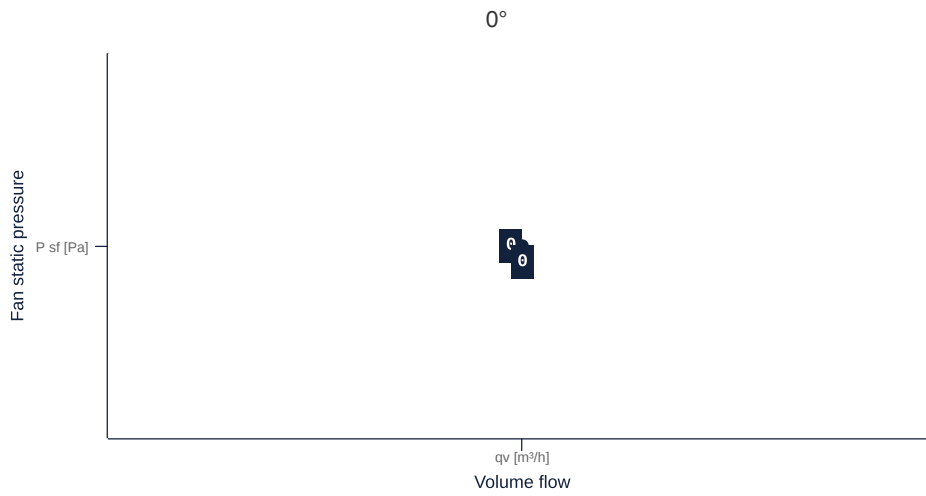
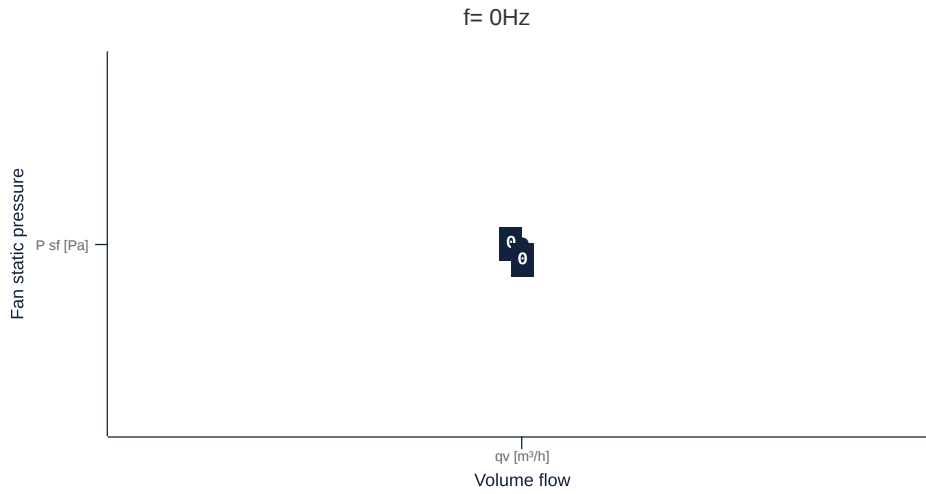
zur Produktseite

EL 250 D2 01

118980

MAP

Name	Value	Unit
Volume flow	0	m ³ /h
Pressure	0	Pa



zur Produktseite

GENERAL DATA

Name	Value	Unit	Formula symbol
ERP conformity	Yes		
Certifications	CE, UKCA		
Duct size	-		WxH _{duct}
Pipe connection size (DN)	DN250		DN
Rated voltage (entire device)	230	V	U _{rated}
Phases (entire device)	3~		phase
Electrical protection (entire device)	6 A		fuse
Housing material	Galvanized steel		mat _{casing}
Impeller material	Plastic		mat _{impeller}
IP-protection class (entire device)	IPX4		IP _{compl}
Weight	6.6	kg	m
Fan type	Diagonal		Fan _{type}
Category / Installation situation	A		cat

MAXIMAL DATA

Name	Value	Unit	Formula symbol
Max. power consumption (device)	450	W	P _{ed, max}
Max. operating current (device)	1.51	A	I _{ed, max}
Max. speed	3990	1/min	n _{max}
Max. stat. efficiency	51.6	%	η _{es}
Max. fan efficiency	55.9	%	η _e
Max. flowrate	2390	m ³ /h	q _{v, max}
Max. stat pressure	905	Pa	p _{sf, max}
Max. medium temperature	50	°C	T _{m, max}
Max. environment temperature	50	°C	T _{amb, max}
Min. environment temperature	-30	°C	T _{amb, min}



MOTOR DATA

Name	Value		Unit	Formula symbol
	50 Hz	60 Hz		
Rated frequency (device)		65		f
Motor type		AC 3~		phase
Control type		frequency-controlled		ctrltype
Installation type		IRM (In)		install
Rotation direction		right		rotation
Isolation class		ISO F		ISOclass
Motor-protection		TAO		protectmotor
Protection class		IP00		IPmotor
Is pole-changeable		No		polexch
Type of power supply		AC 3~		pwrsupmotor
Number of poles (1)		2.000000		num polesw1
Connection	Y			wiringw1
Rated voltage	230		V	U _{rated, f1}
Rated current	1.6		A	I _{rated, f1}
Speed	3600		1/min	n _{r1}
UL-Certification motor		None		ULcert

ERP DATA (LOT11)

Name	Value	Unit	Formula symbol
Speed at the energy efficiency optimum	3864	1/min	n _{opt}
Efficiency level	57.5	%	N
Efficiency category	statisch		catefficiency
Input power of the motor at the energy efficiency optimum	0.42	kW	P _{e, opt}
Overall efficiency	72	%	η _{ges}
Measurement category	A		meas cat
Fan pressure at energy efficiency optimum	544	Pa	p _{f, opt}
Flowrate at energy efficiency optimum	1476	m³/h	Q _{v, opt}

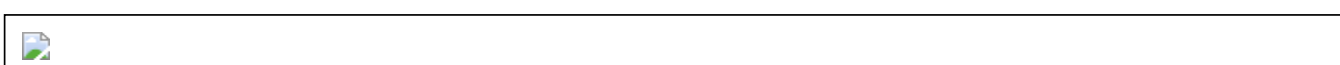
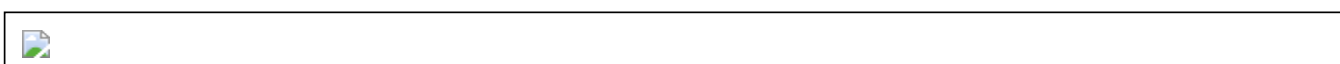
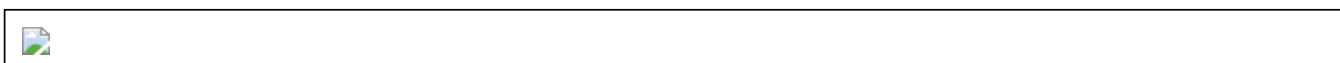
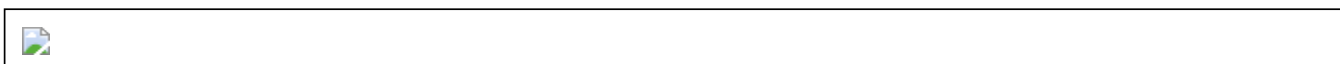
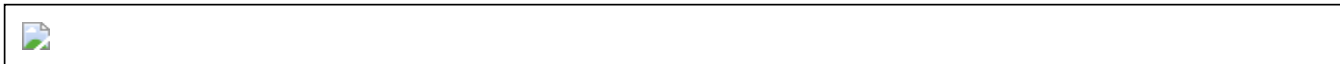


zur Produktseite

EL 250 D2 01

118980

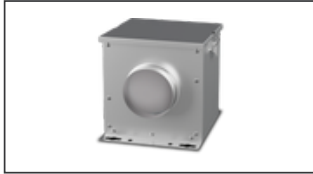
SCHALTPLÄNE / MASSZEICHNUNGEN



zur Produktseite

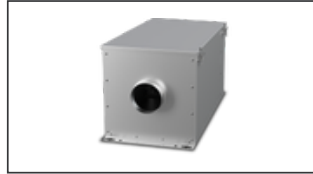
MECHANICAL ACCESSORIES

FV 250 | 112833



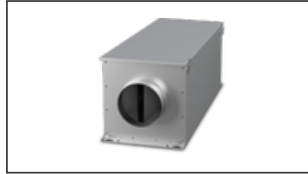
- Air filter box with mat filter ISO Coarse 45 % (G3)
- Toggle-type fastener

FT 250 | 112845



- Air filter box for pocket filter
- Toggle-type fastener
- Galvanized steel sheet housing
- Without filter

FTW 250 | 112854



- Air filter box with pocket filter M5
- Integrated warm water heating coil
- Galvanized steel sheet housing
- Toggle-type fastener

RSK 250D | 113488



- Back draught shutter for tube fitting
- Galvanized steel sheet housing
- Aluminum flaps
- Integrated gasket

UKR 5025 01 | 114638



- Transition duct / tube
- Steel sheet, galvanized
- 500 x 250 mm / NW 250

UKR 5030 01 | 114639



- Transition duct / tube
- Steel sheet, galvanized
- 500 x 300 mm / NW 250

VM 250 | 102651



- Fast clamps for sound decoupling and sealing
- Galvanized steel sheet, 5 mm Neopren gasket
- 1 Pack = 2 pieces

KWR 250 02 | 124066



- Cold water cooler, uninsulated
- Version left
- Connection ND 250
- Galvanized steel sheet with condensate tray

DVR 250 01 | 126775



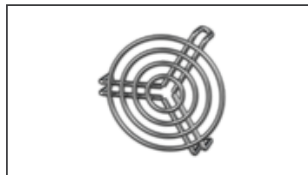
- Direct evaporator for reversing circuit, uninsulated
- Version right
- Integrated condensate tray
- Connection ND 250

DVR 250 02 | 126776



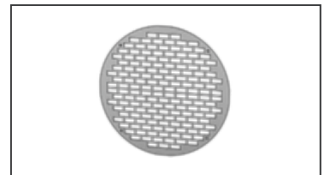
- Direct evaporator for reversing circuit, uninsulated
- Version left
- Integrated condensate tray
- Connection ND 250

SG 250 01 | 102899



- Protection grille for tube connection
- Galvanized wire

SG 250 02 | 112677



- Inlet protection grille for Etaline
- Galvanized steel sheet

SDF 250 | 102705



- Flexible tube silencer
- Galvanized steel sheet
- Sound insulation packing 50 mm

RSK 250 | 102686



- Back draught shutter for tube fitting
- Galvanized steel sheet housing
- Aluminum flaps

SDS 250 | 102721



- Rigid tube silencer
- Galvanized steel sheet
- Sound insulation packing 50 mm (mineral wool)

KWR 250 01 | 124065



- Cold water cooler, uninsulated
- Version right
- Connection ND 250
- Galvanized steel sheet with condensate tray



ELECTRICAL ACCESSORIES

GS 03 | 107633



- Device switch
- $U_{max} = 400\text{ V}$, $I_{max} = 25\text{ A}$
- Switching capacity $400\text{ V } 3\sim = 5,5\text{ kW}$
- Protection class IP 55

MTP 20 | 128146



- Potentiometer $10\text{ k}\Omega$
- Switching contact $1\text{A}/250\text{V AC}$ - $2,5\text{A}/12\text{V DC}$
- Max. ambient temperature $50\text{ }^\circ\text{C}$
- VDE

MTP 30 | 143289



- Stepped potentiometer $10\text{ k}\Omega$
- Step 1 + 2 settable $10\% - 100\% \text{ Vdc}$
- Step 3 $100\% \text{ Vdc}$
- Supply voltage $+10\text{ Vdc}$

MTP 40 | 147359



- Potentiometer $10\text{ k}\Omega$
- Connection in terminal box
- Max. ambient temperature $50\text{ }^\circ\text{C}$
- PU: 20 pieces

SEN AIR | 148641



- Airflow and temperature transducer
- Measuring range temperature $0...+50\text{ }^\circ\text{C}$
- With adjustable switching threshold (air speed)
- Measuring range air velocity up to 20 m/s

CON P1000 | 115259



- Constant pressure control
- Actual value display possible via optional control unit
- Output $0-10\text{ V DC}$ + FC enable + setpoint reached
- Pressure setting by means of decade switch

FU 075 32 | 154321



- Frequency converter
- Supply voltage $230\text{ V } 1\sim - 50/60\text{ Hz}$
- Output voltage $0 - 230\text{ V } 3\sim$
- Protection class IP 20, for switch cabinet

FU 075 33 | 154322



- Frequency converter IP66
- Supply voltage $230\text{ V } 1\sim - 50/60\text{ Hz}$
- Output voltage $0 - 230\text{ V } 3\sim$
- Fire mode function (smoke extract fans)

