

Project : Replacement 12" - 419132/51L
Quotation :

Customer : Just Fans

Project Code : BD-17404
Date : 08 November 2024



JMv Aerofoil

31JMv/14/2/6/29
Lead time may vary based on stock availability at time of order. Please refresh the lead time in the project or reselect the fan before placing an order.

PRODUCT

Model Code	31JMv/14/2/6/29
Fan Diameter	315 mm
Fan Speed	2760 rpm [Max 5558, Min 566]
Impeller	6 Blades, 29° Angle
Installation	Type D - Form B
Fan Casing	Long Case - Horizontal

PERFORMANCE

Requested Duty	1.00 m³/s @ 200 Pa (Static)
Outlet Dynamic Pressure	99 Pa
Velocity	12.87 m/s
Absorbed Power	0.457 kW
Peak Power	0.496 kW [Used to size motor]
Efficiency (Total / Static)	65.9 % / 44.1 %

MOTOR

Motor Rating	0.580 kW [BT9 Frame - 2 Pole]
Full Load Current	1.45 A
Starting Current	5.7 A
Electrical Supply	380 - 415 Volts 50 Hz 3 Phase
Motor Winding	Standard
Motor Type	Pad - Class F Insulation

EFFICIENCY GRADES

ErP [FMEG] Rating	N 58 (ErP Compliant 2015) ✓
ErP [FMEG]	Target N 58
FMEG Blade Angle [Range]	24° [21° To 34°]
Measurement Category	D
VSD	No
Fan + Motor Efficiency	50.5% (0.801 m³/s @ 340 Pa)
Motor Input Power (ErP)	0.539 kW

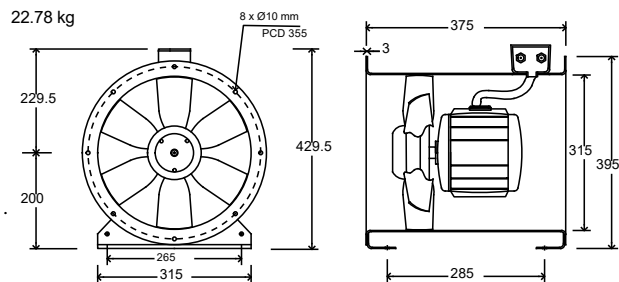
ENVIRONMENT

Air Density	1.2 kg/m³ / 20 °C / 0 m / 40% RH
Smoke Venting	No Smoke Venting
Operating Environment	Normal

RUNNING COSTS

Power from mains	0.640 kW
Energy Consumption	1,280.16 kWh (2,000.00 h/Year)
Running Cost / Year	£320.04
CO2 per Year	450.05 kgCO2e
SFP value	0.64 W/l/s @ Actual Duty

PRODUCT DIMENSIONS



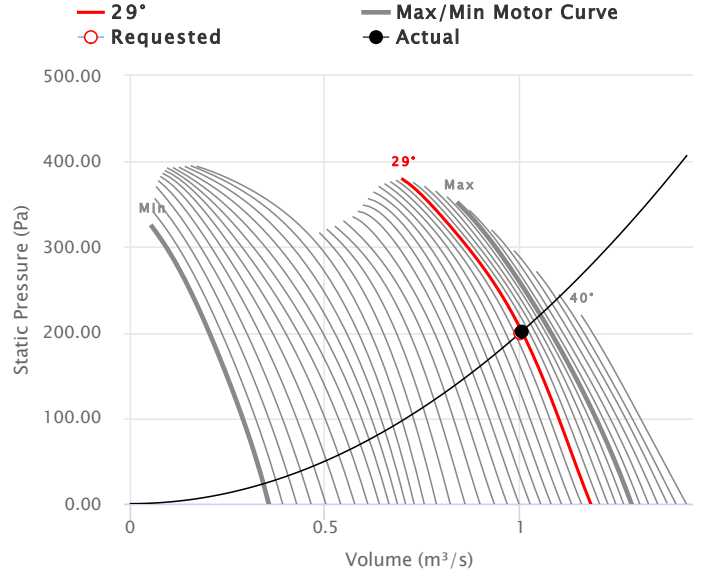
This drawing shows dimensions that should be used as a guide only and are subject to change. Certified drawings are available on request.

MECHANICAL

Casing	315mm Steel Casing
Impeller	Aluminium LM6 Hub, Aluminium LM6 Blades
Operating Temperatures	-40 °C to 50 °C (95% Max Relative Humidity)
Weight	22.78kg

COMMENTS

FAN PERFORMANCE CURVE



ACOUSTICS

	Sound Spectrum (Hz)								Overall		Distance (3 m)
	63	125	250	500	1k	2k	4k	8k	Lw*	LwA*	LpA @ 3 m **
Inlet	82	82	83	79	77	73	71	67	88	82	62
Outlet	82	82	83	79	77	73	71	67	88	82	62
Breakout	74	66	63	59	57	52	56	48	75	63	43

Sound Data At Requested Duty.

* Lw dB re 10⁻¹² W

** dBA re 2x10⁻⁵ Pa

FAN & ACCESSORIES

Item Description	Part Number	Qty
31JMv/14/2/6/29	JV346202	1
Mounting Feet Set (408199x2)	AS021102	1
Matching Flange	408238	2
Flexible Connector & Clips	AS040315	2
Rubber AV mount (Set of 505000x4)	AS035471	1

Project : Replacement 12" - 419132/51L

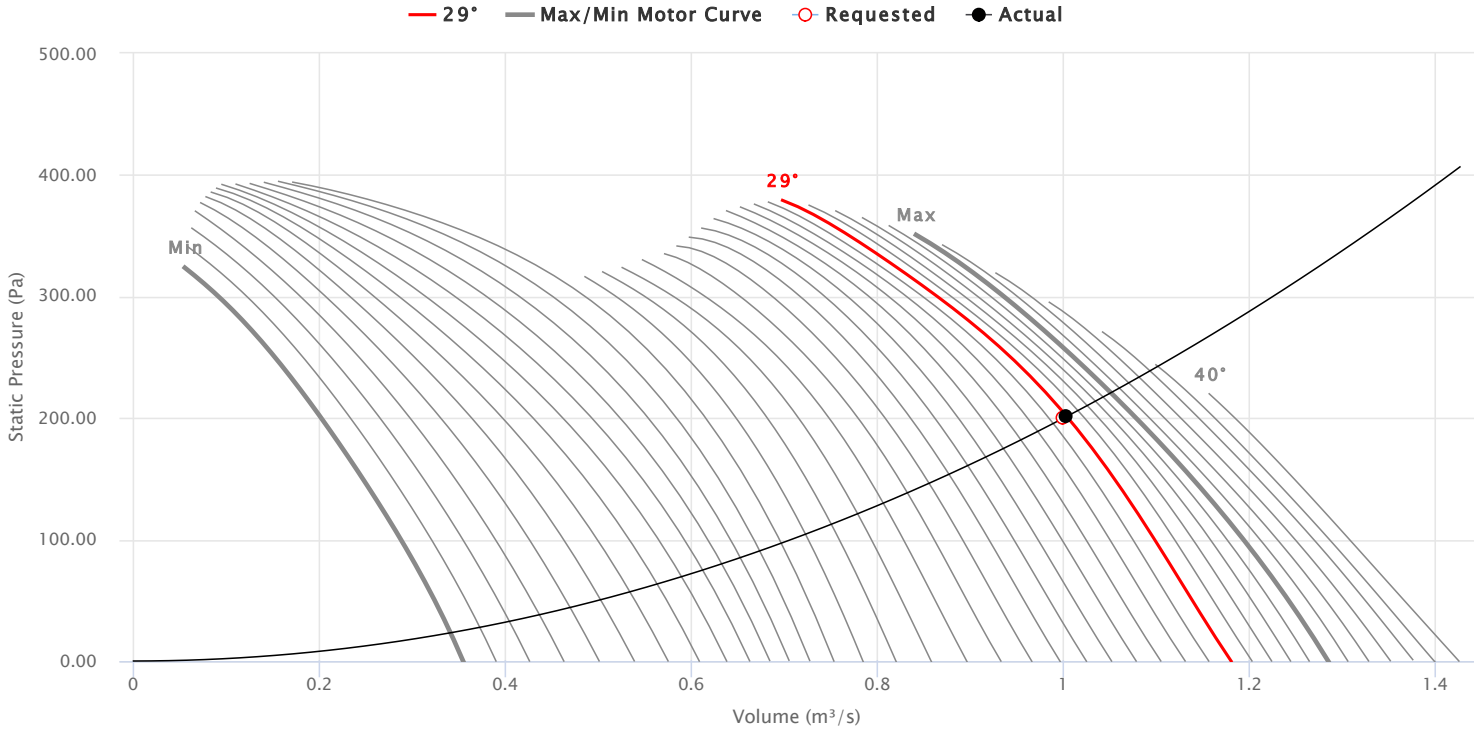
Customer : Just Fans

Project Code : BD-17404

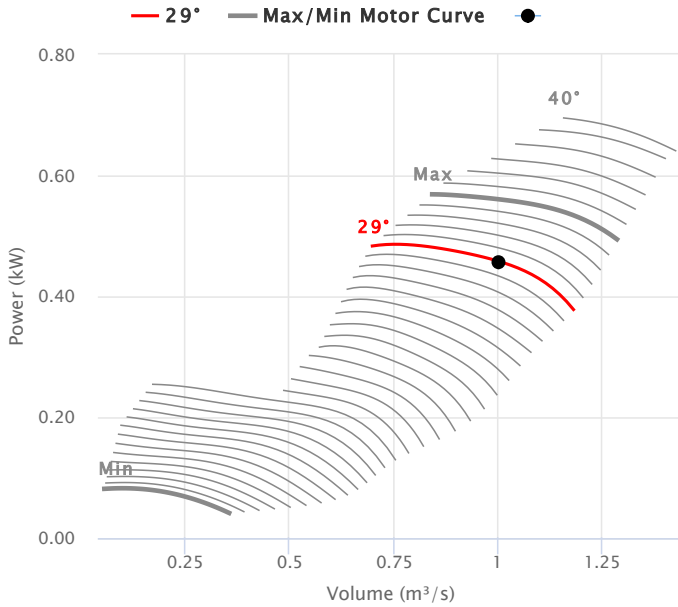
Quotation :

Date : 08 November 2024

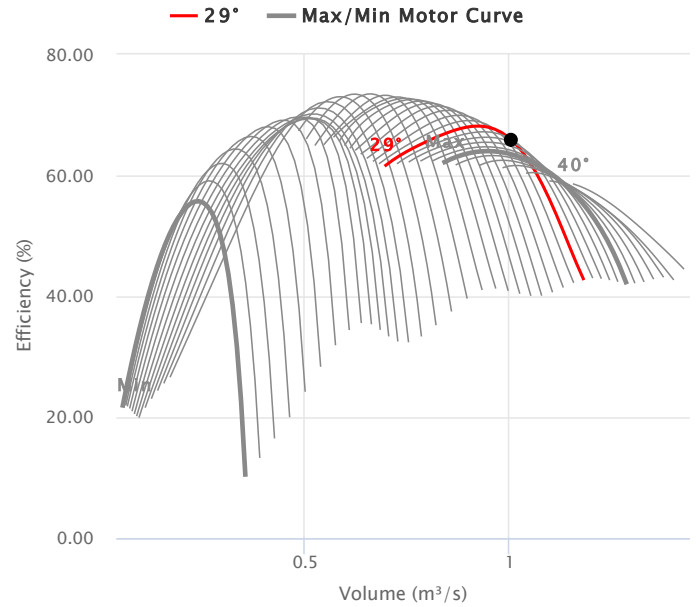
AERODYNAMIC



POWER CHART



EFFICIENCY CHART



ACOUSTICS

	Sound Spectrum (Hz)								Overall	
	63	125	250	500	1k	2k	4k	8k	Lw*	LpA @ 3 m**
Inlet	82	82	83	79	77	73	71	67	88	62
Outlet	82	82	83	79	77	73	71	67	88	62
Breakout	74	66	63	59	57	52	56	48	75	43

Sound Data At Requested Duty .

* Lw dB re 10⁻¹² W

** dBA re 2x10⁻⁵ Pa

Project : Replacement 12" - 419132/51L

Customer : Just Fans

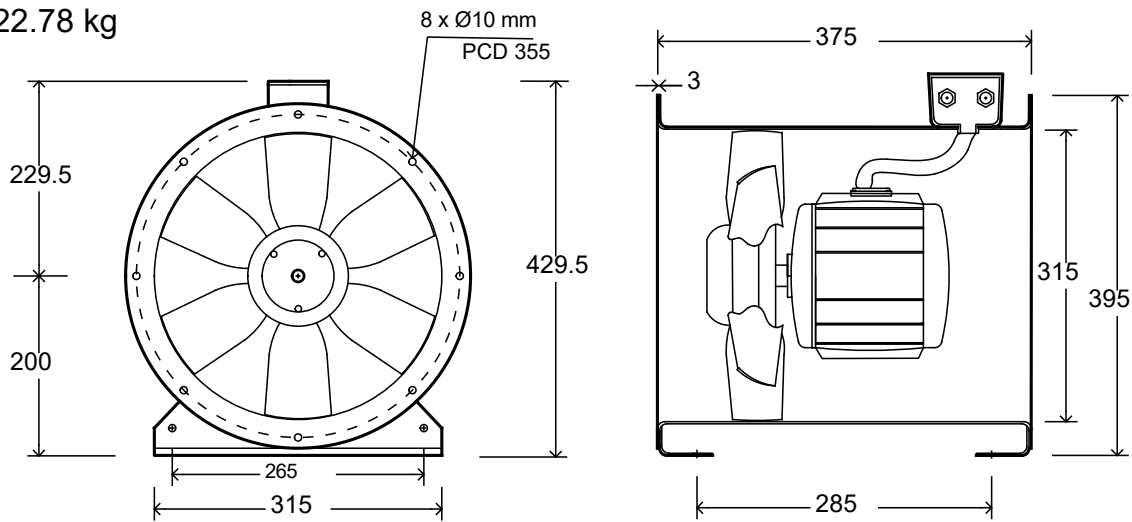
Project Code : BD-17404

Quotation :

Date : 08 November 2024

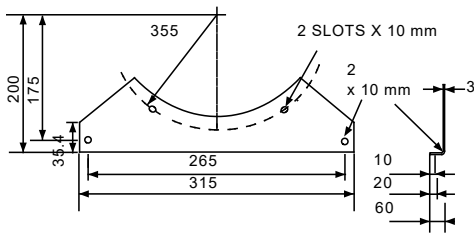
PRODUCT DIMENSIONS

22.78 kg

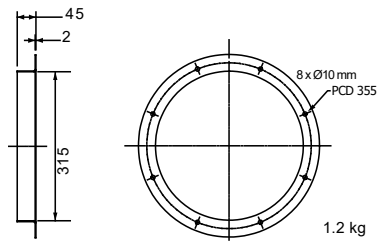


ACCESSORY DIMENSIONS

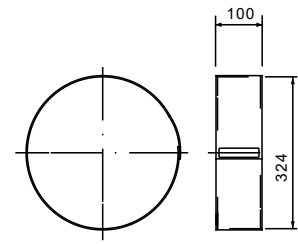
MOUNTING FEET SET (408199X2)



MATCHING FLANGE



FLEXIBLE CONNECTOR & CLIPS



RUBBER AV MOUNT (SET OF 505000X4)

