



CAB-ECOWATT

5113863400 - CAB-355 ECOWATT 230V50/60HZ N8 - ACOUSTIC CABINET FANS



Low profile acoustic cabinet fans, manufactured from galvanised sheet steel and internally lined with 50mm thickness of fireproof acoustic insulation (M0), with sound-absorbent insulation at the inlet. All models incorporate inlet and discharge circular duct connection flanges with integrated rubber air seal. Direct drive backward curved centrifugal fan. Brushless EC motor, IP44, class B, with thermal overload protection, suitable for single phase supply 230V +/- 15%-50/60Hz. Fan supply with external ON-OFF electrical isolation switch, and potentiometer to adjust the fan speed. Also possible to control the fan speed with external potentiometer type REB-ECOWATT or analogue input signal 0-10V. This cabinet fan has been designed for indoor use, with inlet air temperatures between -20°C up to +40°C and suitable for mounting in any orientation. Brand S&P model CAB-355 ECOWATT 230V50/60HZ N8.

Theoretical Working Point

| | |
|-----------------|-----------------------|
| Airflow | - |
| Static Pressure | 0,000 Pa |
| Temperature | 20 °C |
| Altitude | 0 m |
| Density | 1,2 kg/m ³ |
| Frequency | 50/60 Hz |

Construction

| | |
|--------------------|----------|
| Discharge diameter | 355 mm |
| Fan size | 355 |
| Weight | 32,50 kg |

Motor Characteristics

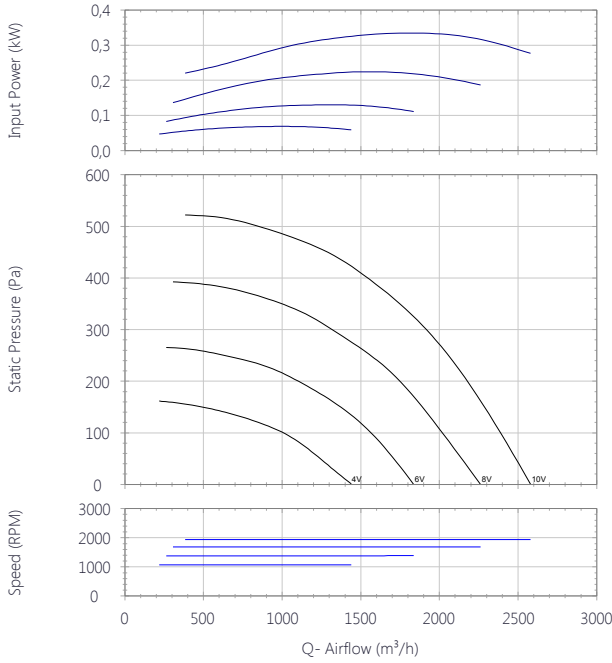
| | |
|--------------------------|-------------|
| Voltage | 1-230V-50Hz |
| Maximum absorbed current | 1,4 A |
| IP Rating | IP44 |
| Motor insulation class | B |



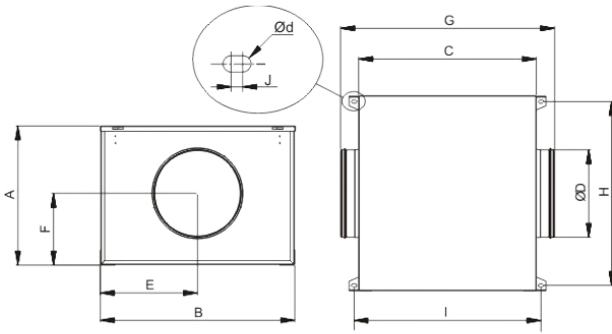
CAB-ECOWATT

5113863400 - CAB-355 ECOWATT 230V50/60HZ N8 - ACOUSTIC CABINET FANS

Performance Chart



Drawing



| A | B | C | D | E | F | G | H | I |
|-----|-----|-----|-----|-----|-----|-----|-----|-----|
| 501 | 699 | 578 | 355 | 350 | 251 | 682 | 668 | 606 |

| J | d |
|-----|-----|
| 6.5 | 4.5 |

Sound Performance

| | 63 | 125 | 250 | 500 | 1k | 2k | 4k | 8k | Overall |
|--------------------------|----|-----|-----|-----|----|----|----|----|---------|
| Inlet (LwA) | 46 | 58 | 67 | 67 | 67 | 66 | 64 | 63 | 74 |
| Inlet LpA @ 1m | 35 | 47 | 56 | 56 | 56 | 55 | 53 | 52 | 63 |
| Outlet (LwA) | 52 | 59 | 63 | 62 | 66 | 62 | 55 | 49 | 70 |
| Outlet LpA @ 1m | 41 | 48 | 52 | 51 | 55 | 51 | 44 | 38 | 59 |
| Breakout (LwA) | 41 | 49 | 62 | 53 | 55 | 53 | 48 | 49 | 64 |
| Breakout LpA @ 1m | 30 | 38 | 51 | 42 | 44 | 42 | 37 | 38 | 53 |

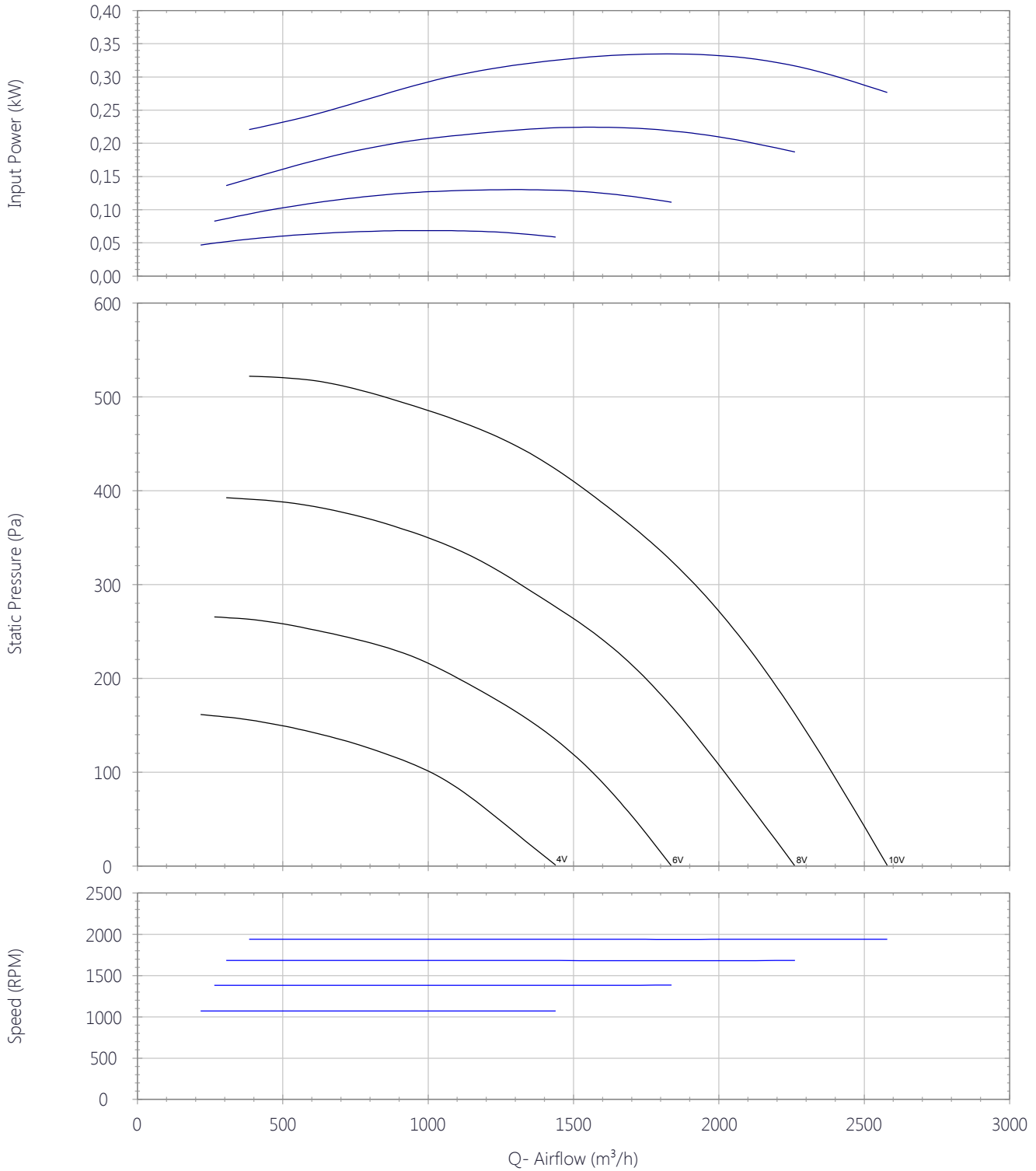




CAB-ECOWATT

5113863400 - CAB-355 ECOWATT 230V50/60HZ N8 - ACOUSTIC CABINET FANS

Performance Chart





CAB-ECOWATT

5113863400 - CAB-355 ECOWATT 230V50/60HZ N8 - ACOUSTIC CABINET FANS

Sound Performance

| | 63 | 125 | 250 | 500 | 1k | 2k | 4k | 8k | Overall |
|--------------------------|----|-----|-----|-----|----|----|----|----|---------|
| Inlet (LwA) | 46 | 58 | 67 | 67 | 67 | 66 | 64 | 63 | 74 |
| Inlet LpA @ 1m | 35 | 47 | 56 | 56 | 56 | 55 | 53 | 52 | 63 |
| Outlet (LwA) | 52 | 59 | 63 | 62 | 66 | 62 | 55 | 49 | 70 |
| Outlet LpA @ 1m | 41 | 48 | 52 | 51 | 55 | 51 | 44 | 38 | 59 |
| Breakout (LwA) | 41 | 49 | 62 | 53 | 55 | 53 | 48 | 49 | 64 |
| Breakout LpA @ 1m | 30 | 38 | 51 | 42 | 44 | 42 | 37 | 38 | 53 |

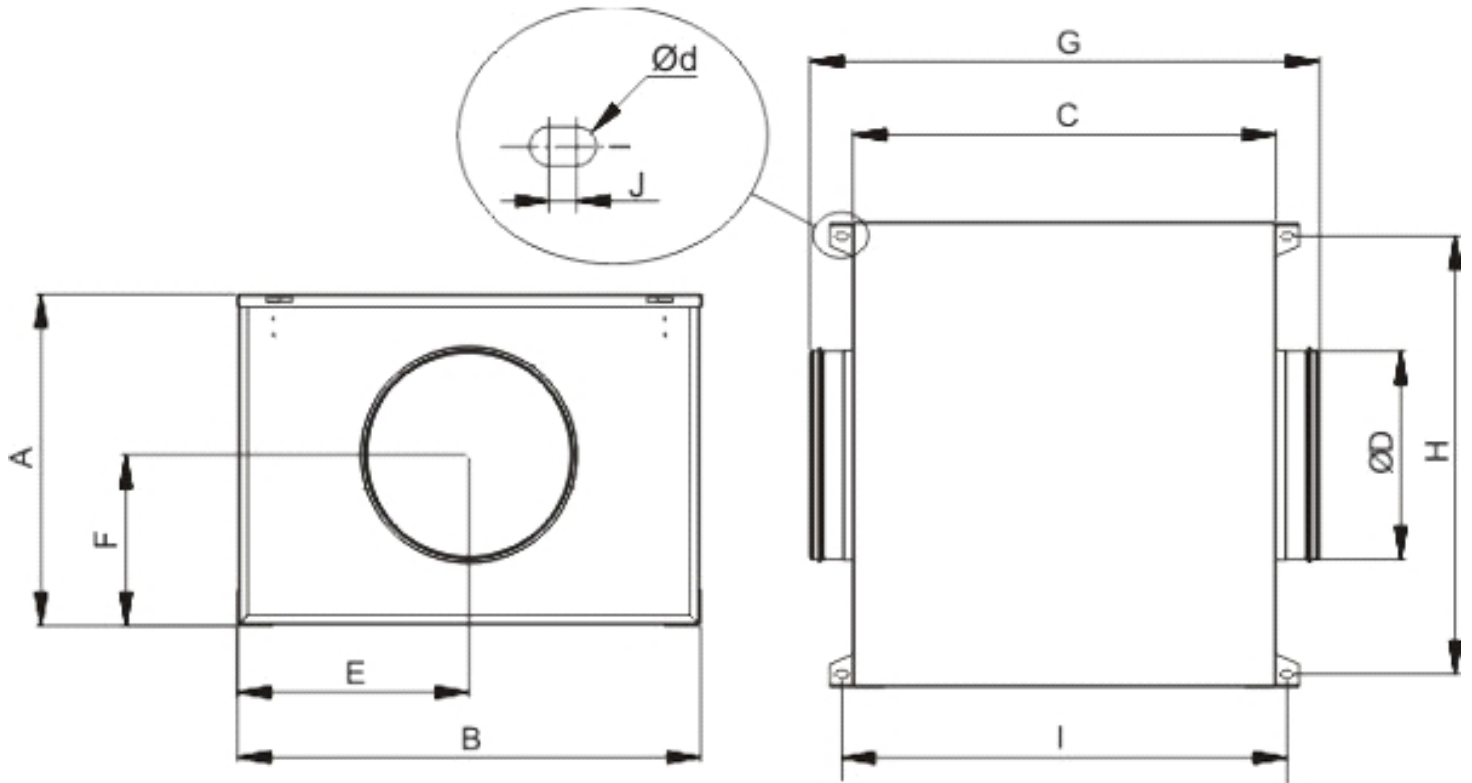




CAB-ECOWATT

5113863400 - CAB-355 ECOWATT 230V50/60HZ N8 - ACOUSTIC CABINET FANS

Drawing



| A | B | C | D | E | F | G | H | I | J | d |
|-----|-----|-----|-----|-----|-----|-----|-----|-----|-----|-----|
| 501 | 699 | 578 | 355 | 350 | 251 | 682 | 668 | 606 | 6.5 | 4.5 |

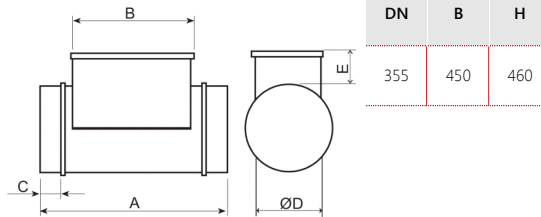
Accessories

5211799400 - MBE-355/60T 2/400V



Electric Heater Battery

Dimensions

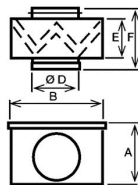


5416593100 - MFL-355 G4



MFL filtration boxes are of G4 grade filtration and are designed for direct connection with standard circular ducting. The MFL-G4 filtration boxes are supplied with a cover easily removable to replace the filter.

Dimensions



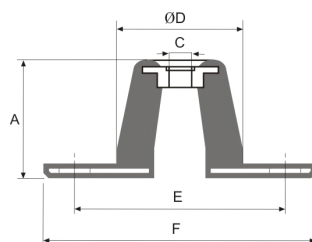
| A | B | D | E | F |
|-----|-----|-----|-----|-----|
| 446 | 469 | 355 | 154 | 248 |

5130861700 - KSE-45

Rubber anti-vibration mounts that absorb vibration and attenuate the noise produced in the installation. (1 KSE = 4 supports in a bag)



Dimensions



| A | C | D | E | F |
|----|---|----|----|----|
| 24 | 8 | 30 | 65 | 90 |



CAB-ECOWATT

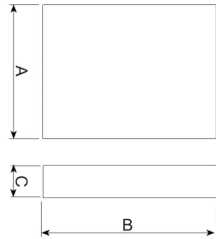
5113863400 - CAB-355 ECOWATT 230V50/60HZ N8 - ACOUSTIC CABINET FANS

5416731100 - SCHAT-AD



SCHAT-AD: Ambient CO2 sensor, temperature and relative humidity with display.

Dimensions



| A | B | C |
|----|----|-----|
| 85 | 26 | 100 |

5211814800 - SIL-355

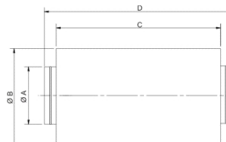
Silencer to be installed either at the inlet or outlet of the fan.



Corrections

| 63 | 125 | 250 | 500 | 1k | 2k | 4k | 8k |
|----|-----|-----|-----|-----|-----|----|----|
| -1 | -2 | -6 | -14 | -18 | -12 | -6 | -5 |

Dimensions



| A | B | C | D |
|-----|-----|-----|------|
| 355 | 450 | 900 | 1050 |

5416730300 - REMP-355

Motorized shutter



Dimensions

| D | axle | L | MH |
|-----|------|-----|----|
| 355 | 12 | 300 | 80 |



CAB-ECOWATT

5113863400 - CAB-355 ECOWATT 230V50/60HZ N8 - ACOUSTIC CABINET FANS

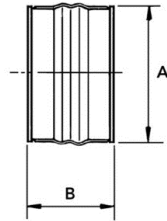


5138921000 - ACOPEL F400-355/160 N

FLEXIBLE CONNECTOR



Dimensions



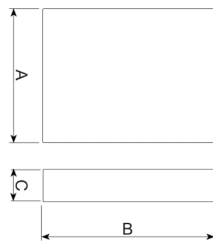
| A | B |
|-----|-----|
| 365 | 160 |

5416844700 - TDP-PI

TDP-D: Pressure sensor, with display. Enables you to control the pressure in the fan inlet.



Dimensions



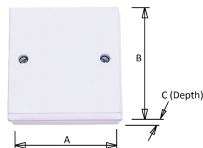
| B | H | T |
|----|-----|----|
| 11 | 130 | 65 |

L011100000276 - OVER RUN TIMER

Remote (wired) run-on timer, adjustable run-on time 30 seconds to 25 minutes.



Dimensions



| A | B | C |
|----|----|----|
| 83 | 83 | 40 |



CAB-ECOWATT

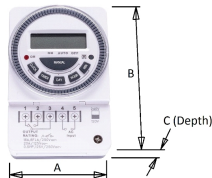
5113863400 - CAB-355 ECOWATT 230V50/60HZ N8 - ACOUSTIC CABINET FANS

L011100000388 - 7-DAY PROGRAMMABLE TIMECLOCK



Surface-mount digital 7-day timer.

Dimensions



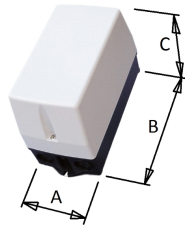
| A | B | C |
|----|----|----|
| 66 | 98 | 39 |

L011100000414 - CONTACTOR INTERFACE STATION -9A-2 x N/C AND 2 x N/O CONTACTS



9A 2 x N/O / 2 x N/C relay in IP65 enclosure for switching of fans from an external source.

Dimensions



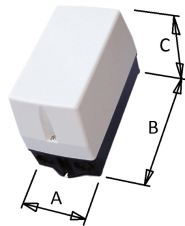
| A | B | C |
|-----|-----|-----|
| 110 | 234 | 149 |

L011100000199 - CONTACTOR INTERFACE STATION - 9A - 4 x N/O CONTACTS



9A N/O relay in IP65 enclosure for switching of fans from an external source, particularly useful for the on/off control of 3-phase units.

Dimensions



| A | B | C |
|-----|-----|-----|
| 110 | 234 | 149 |



CAB-ECOWATT

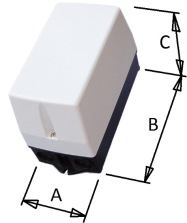
5113863400 - CAB-355 ECOWATT 230V50/60HZ N8 - ACOUSTIC CABINET FANS

L0111000000541 - RELAY 230V COIL DPDT C/W ENCLOSURE IP65

Double-Pole, Double-throw relay in IP65 enclosure for switching of fans from an external source.



Dimensions



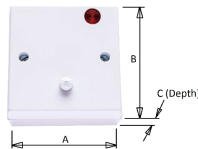
| A | B | C |
|-----|-----|-----|
| 110 | 234 | 149 |

L0111000000275 - PIR SENSOR

PIR SENSOR with Volt-Free contacts and adjustable timer.



Dimensions



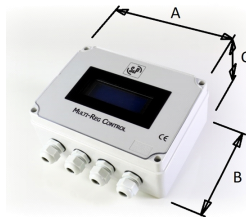
| A | B | C |
|----|----|----|
| 83 | 83 | 55 |

L0111000000957 - S&P MULTI-REG EC FAN CONTROLLER / INTERFACE

Fan controller to provide demand ventilation speed control for dedicated control of the S&P ECOWATT EC ranges and full BMS compatibility.



Dimensions



| A | B | C |
|-----|-----|----|
| 196 | 145 | 82 |



CAB-ECOWATT

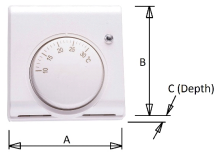
5113863400 - CAB-355 ECOWATT 230V50/60HZ N8 - ACOUSTIC CABINET FANS

L0111000000389 - THERMOSTAT 230V INPUT



Thermostat for switching of fans by temperature, adjustable temperature range 10-30 degrees C.

Dimensions



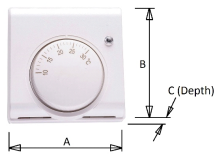
| A | B | C |
|----|----|----|
| 83 | 83 | 40 |

L0111000000390 - THERMOSTAT 24V INPUT



Thermostat for switching of fans by temperature, adjustable temperature range 10-30 degrees C.

Dimensions



| A | B | C |
|----|----|----|
| 83 | 83 | 40 |



CAB-ECOWATT

5113863400 - CAB-355 ECOWATT 230V50/60HZ N8 - ACOUSTIC CABINET FANS

ErP Data

| Ecodesign | |
|---|-----------------------------------|
| Commission regulation (EU) N°1253/2014 of July 2014 | |
| Information requirements (Annex V) | |
| Product description | CAB-355 ECOWATT 230V50/60HZ N8 |
| Manufacturer's Info | S&P |
| Identifier | - |
| Typology | NRVU unidirectional |
| Drive | VSD |
| Type of HRC | None |
| Thermal efficiency (%) | NA |
| Qnom (m3/s) | 0,42 |
| Pelec (kW) | 0,33 |
| SFPint (W/m3/s) | NA |
| Face velocity (m/s) | 1,5 |
| $\Delta p_{s,ext}$ (Pa) | 407,3 |
| $\Delta p_{s,int}$ (Pa) | NA |
| $\Delta p_{s,add}$ (Pa) | NA |
| Static efficiency fans (%) | 68,1 |
| External leakage rate (%) | 3 |
| Internal leakage rate (%) | NA |
| Filter performance | NA |
| Filter warning | NA |
| LWA dB(A) | 61 |
| https://www.solerpalau.com/ | |