



## CAB

5148550400 - CAB-355 RE (230V 50) N6 - ACOUSTIC CABINET FANS



Centrifugal fan cabinet with manufactured from galvanised sheet steel, acoustic and fire retardant lining 50 mm thick. Forward curved centrifugal fan with closed single-phase motor and speed controllable. IP55, F Brand S&P model CAB-355 RE (230V 50) N6.

### Theoretical Working Point

|                 |                       |
|-----------------|-----------------------|
| Airflow         | -                     |
| Static Pressure | 0,000 Pa              |
| Temperature     | 20 °C                 |
| Altitude        | 0 m                   |
| Density         | 1,2 kg/m <sup>3</sup> |
| Frequency       | 50 Hz                 |

### Construction

|                    |          |
|--------------------|----------|
| Discharge diameter | 355 mm   |
| Fan size           | 355      |
| Weight             | 35,00 kg |

### Motor Characteristics

|                          |             |
|--------------------------|-------------|
| Number of poles          | 4           |
| Voltage                  | 1-230V-50Hz |
| Maximum absorbed current | 4,1 A       |
| IP Rating                | IP55        |
| Motor insulation class   | F           |

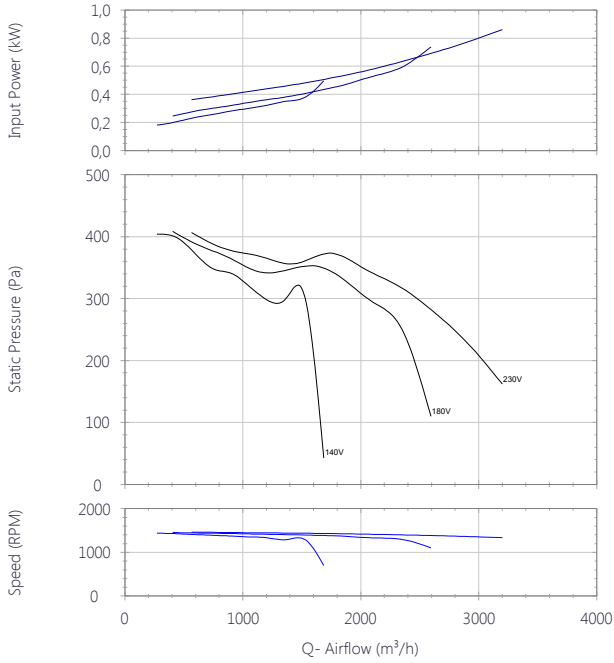


**CAB**

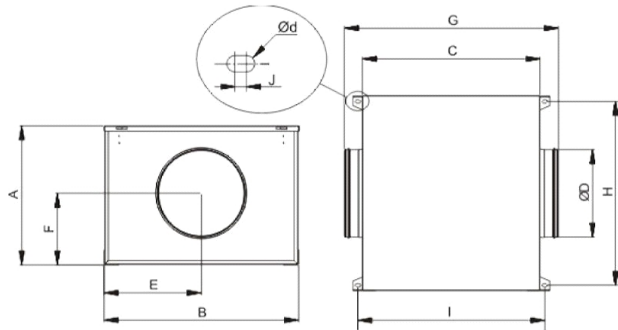
5148550400 - CAB-355 RE (230V 50) N6 - ACOUSTIC CABINET FANS



### Performance Chart



### Drawing



| A   | B   | C   | D   | E   | F   | G   | H   | I   |
|-----|-----|-----|-----|-----|-----|-----|-----|-----|
| 513 | 660 | 600 | 355 | 331 | 292 | 710 | 627 | 629 |

| J   | Ød  |
|-----|-----|
| 6.5 | 4.5 |

### Sound Performance

|                          | 63 | 125 | 250 | 500 | 1k | 2k | 4k | 8k | Overall |
|--------------------------|----|-----|-----|-----|----|----|----|----|---------|
| <b>Inlet (LwA)</b>       | 55 | 60  | 63  | 57  | 61 | 61 | 58 | 49 | 68      |
| <b>Inlet LpA @ 3m</b>    | 34 | 39  | 42  | 36  | 40 | 40 | 37 | 28 | 48      |
| <b>Outlet (LwA)</b>      | 60 | 64  | 68  | 73  | 79 | 78 | 77 | 71 | 84      |
| <b>Outlet LpA @ 3m</b>   | 39 | 43  | 47  | 52  | 58 | 57 | 56 | 50 | 63      |
| <b>Breakout (LwA)</b>    | 50 | 55  | 57  | 51  | 56 | 54 | 54 | 45 | 63      |
| <b>Breakout LpA @ 3m</b> | 29 | 34  | 36  | 30  | 35 | 33 | 33 | 24 | 42      |



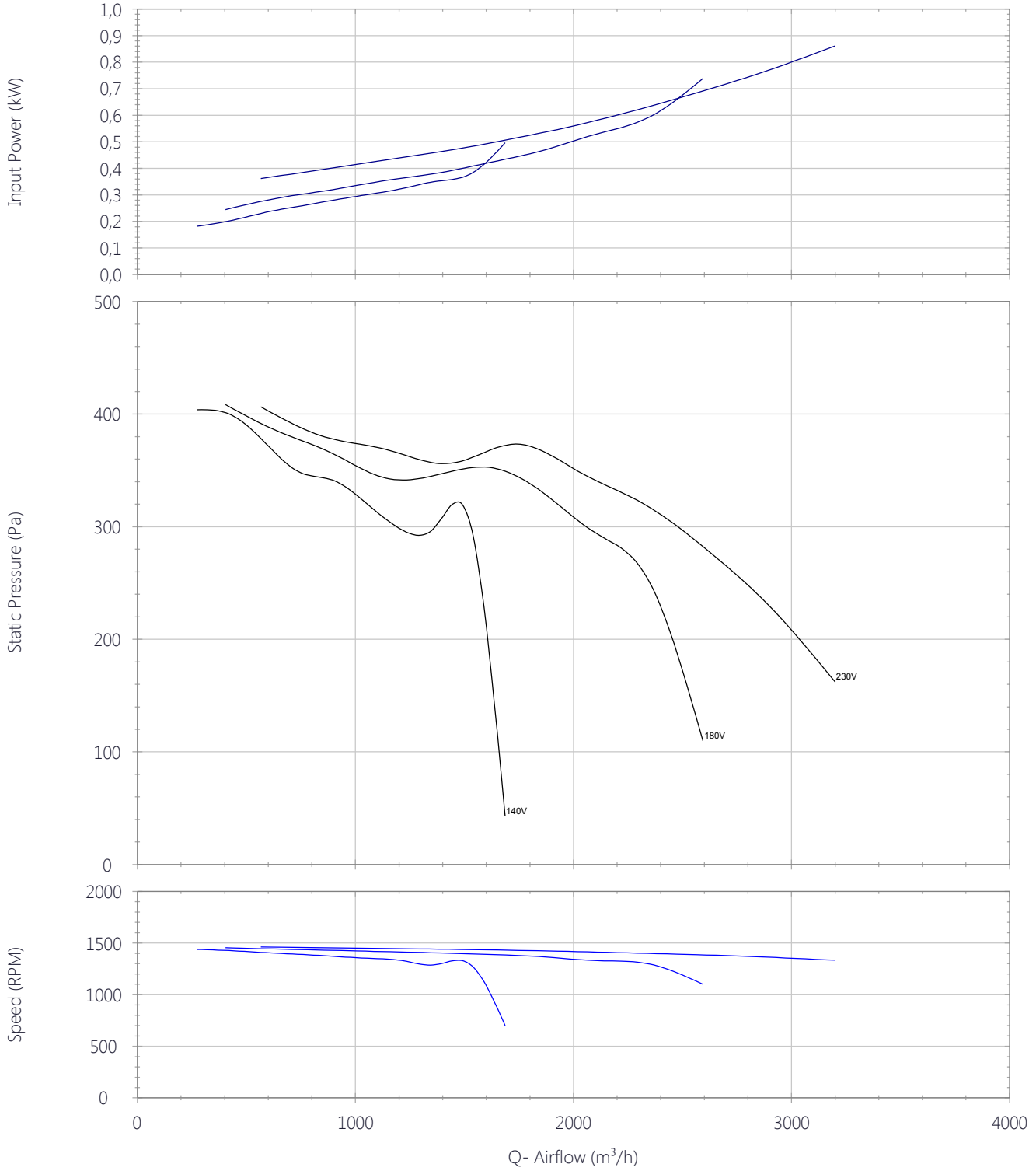


CAB

5148550400 - CAB-355 RE (230V 50) N6 - ACOUSTIC CABINET FANS



### Performance Chart



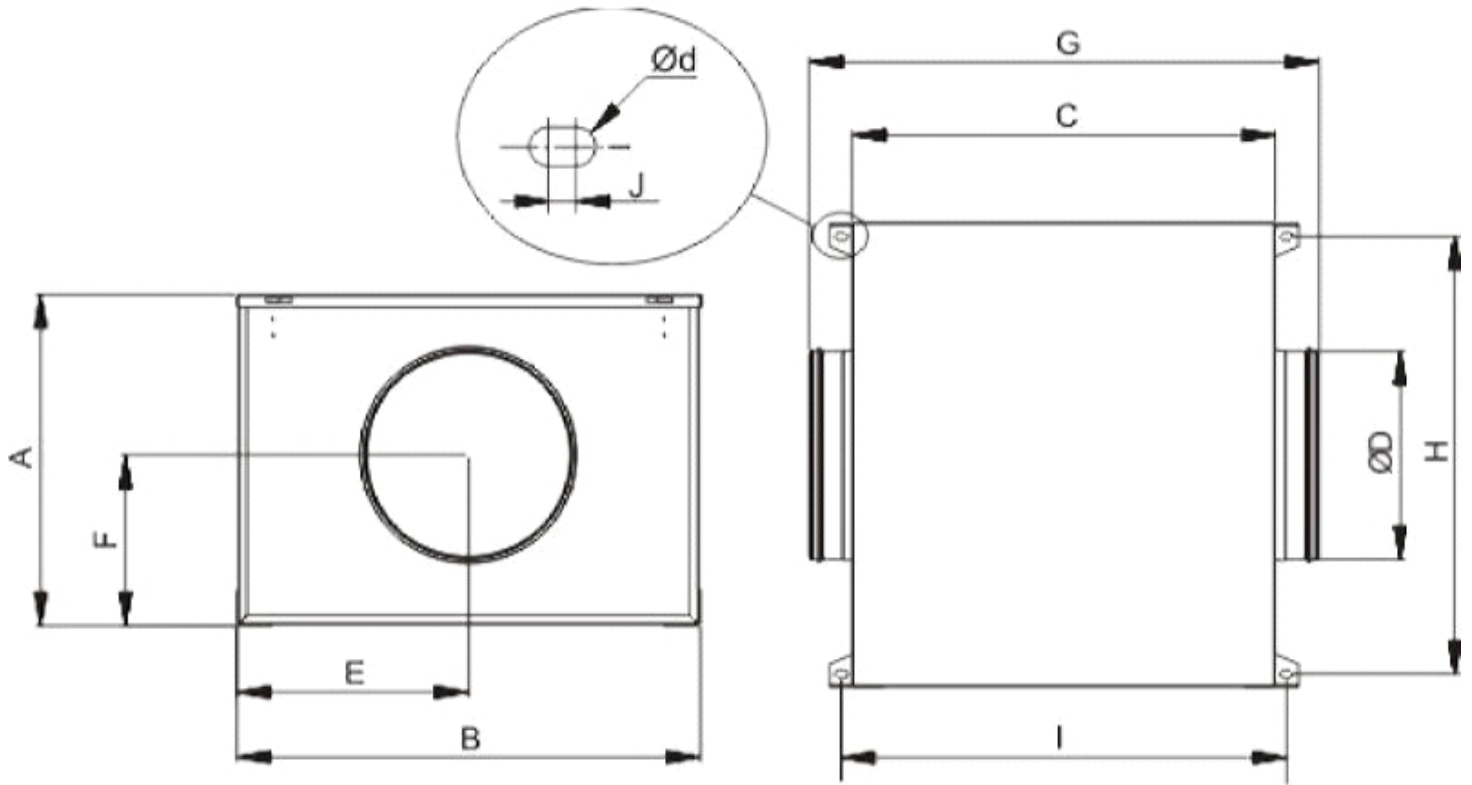


### Sound Performance

|                          | 63 | 125 | 250 | 500 | 1k | 2k | 4k | 8k | Overall |
|--------------------------|----|-----|-----|-----|----|----|----|----|---------|
| <b>Inlet (LwA)</b>       | 55 | 60  | 63  | 57  | 61 | 61 | 58 | 49 | 68      |
| <b>Inlet LpA @ 3m</b>    | 34 | 39  | 42  | 36  | 40 | 40 | 37 | 28 | 48      |
| <b>Outlet (LwA)</b>      | 60 | 64  | 68  | 73  | 79 | 78 | 77 | 71 | 84      |
| <b>Outlet LpA @ 3m</b>   | 39 | 43  | 47  | 52  | 58 | 57 | 56 | 50 | 63      |
| <b>Breakout (LwA)</b>    | 50 | 55  | 57  | 51  | 56 | 54 | 54 | 45 | 63      |
| <b>Breakout LpA @ 3m</b> | 29 | 34  | 36  | 30  | 35 | 33 | 33 | 24 | 42      |



Drawing



| A   | B   | C   | D   | E   | F   | G   | H   | I   | J   | Ød  |
|-----|-----|-----|-----|-----|-----|-----|-----|-----|-----|-----|
| 513 | 660 | 600 | 355 | 331 | 292 | 710 | 627 | 629 | 6.5 | 4.5 |

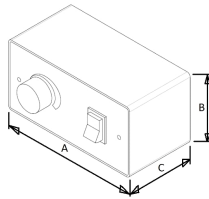
Accessories

L0111000000027 - REB-6 230V 50HZ 1PH FAN SPEED CONTROLLER

Electronic single phase speed controller, surface mounted, fuse protected with separate on/off switch, boost start and thermal fuse monitoring and fan fail indication.



**Dimensions**



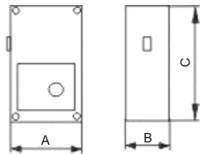
| A   | B  | C  |
|-----|----|----|
| 148 | 95 | 55 |

5401302400 - REB-5 (230V50HZ)

Electronic speed controller



**Dimensions**



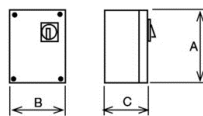
| A  | B  | C   |
|----|----|-----|
| 95 | 85 | 164 |

5401641000 - RMB-5 (230V 50/60HZ)

AUTOTRANSFORMER SPEED CONTROLLER



**Dimensions**



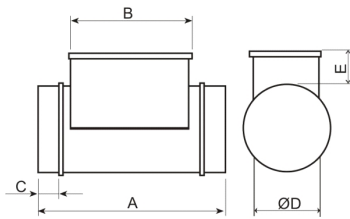
| A   | B   | C  |
|-----|-----|----|
| 230 | 180 | 95 |

5211807200 - MBE-355/90T 3/400V



Electric Heater Battery

**Dimensions**



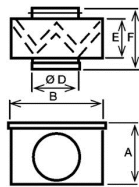
| A   | B   | C  | D   | E   |
|-----|-----|----|-----|-----|
| 400 | 285 | 50 | 355 | 105 |

5416593100 - MFL-355 G4



MFL filtration boxes are of G4 grade filtration and are designed for direct connection with standard circular ducting. The MFL-G4 filtration boxes are supplied with a cover easily removable to replace the filter.

**Dimensions**



| A   | B   | D   | E   | F   |
|-----|-----|-----|-----|-----|
| 446 | 469 | 355 | 154 | 248 |

5211814800 - SIL-355

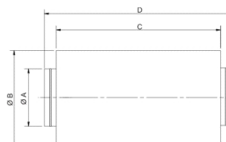
Silencer to be installed either at the inlet or outlet of the fan.



**Corrections**

| 63 | 125 | 250 | 500 | 1k  | 2k  | 4k | 8k |
|----|-----|-----|-----|-----|-----|----|----|
| -1 | -2  | -6  | -14 | -18 | -12 | -6 | -5 |

**Dimensions**



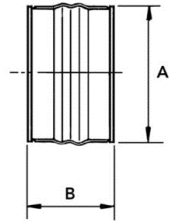
| A   | B   | C   | D    |
|-----|-----|-----|------|
| 355 | 450 | 900 | 1050 |

5138921000 - ACOPEL F400-355/160 N

FLEXIBLE CONNECTOR



Dimensions



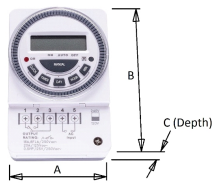
| A   | B   |
|-----|-----|
| 365 | 160 |

L011100000388 - 7-DAY PROGRAMMABLE TIMECLOCK

Surface-mount digital 7-day timer.



Dimensions



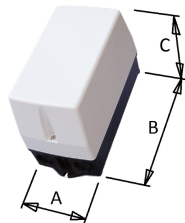
| A  | B  | C  |
|----|----|----|
| 66 | 98 | 39 |

L011100000414 - CONTACTOR INTERFACE STATION -9A-2 x N/C AND 2 x N/O CONTACTS

9A 2 x N/O / 2 x N/C relay in IP65 enclosure for switching of fans from an external source.



Dimensions



| A   | B   | C   |
|-----|-----|-----|
| 110 | 234 | 149 |





**CAB**

5148550400 - CAB-355 RE (230V 50) N6 - ACOUSTIC CABINET FANS

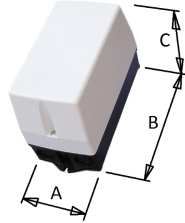


L011100000199 - CONTACTOR INTERFACE STATION - 9A – 4 x N/O CONTACTS

9A N/O relay in IP65 enclosure for switching of fans from an external source, particularly useful for the on/off control of 3-phase units.



**Dimensions**



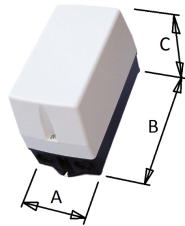
| A   | B   | C   |
|-----|-----|-----|
| 110 | 234 | 149 |

L011100000541 - RELAY 230V COIL DPDT C/W ENCLOSURE IP65

Double-Pole, Double-throw relay in IP65 enclosure for switching of fans from an external source.



**Dimensions**



| A   | B   | C   |
|-----|-----|-----|
| 110 | 234 | 149 |