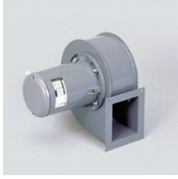




CMB/CMT

5130206500 - CMB/2-160/060 0,37KW (230V50HZ)LG270 VE



Single inlet centrifugal fan direct driven for the continuous extraction of air stream up to 110°C. Forward curved centrifugal impeller, manufactured from galvanised sheet steel painted with epoxy polyester. Single phase motor with thermal protector . Brand Soler_Palau model CMB/2-160/060 0,37KW (230V50HZ)LG270 VE .

Theoretical Working Point

Airflow	-
Static Pressure	0,000 Pa
Temperature	20 °C
Altitude	0 m
Density	1,2 kg/m ³
Frequency	50 Hz

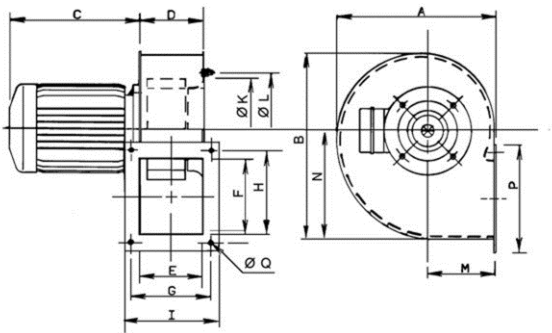
Construction

Fan size	160/60
Weight	9,50 kg

Motor Characteristics

Number of poles	2
Motor Power	0,37kW
Voltage	1-230V-50Hz
IP Rating	IP55
Motor insulation class	F

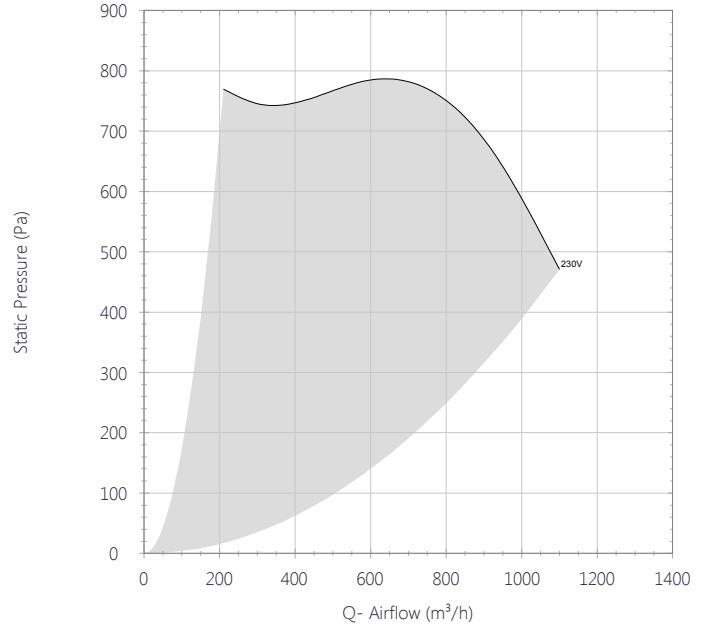
Drawing



A	B	C	D	E	F	G	H	I
254	293	207	102.5	100	120	128	148	153

K	L	M	N	P	Q	Z
166	180	109	171	172	7.5	309.5

Performance Chart

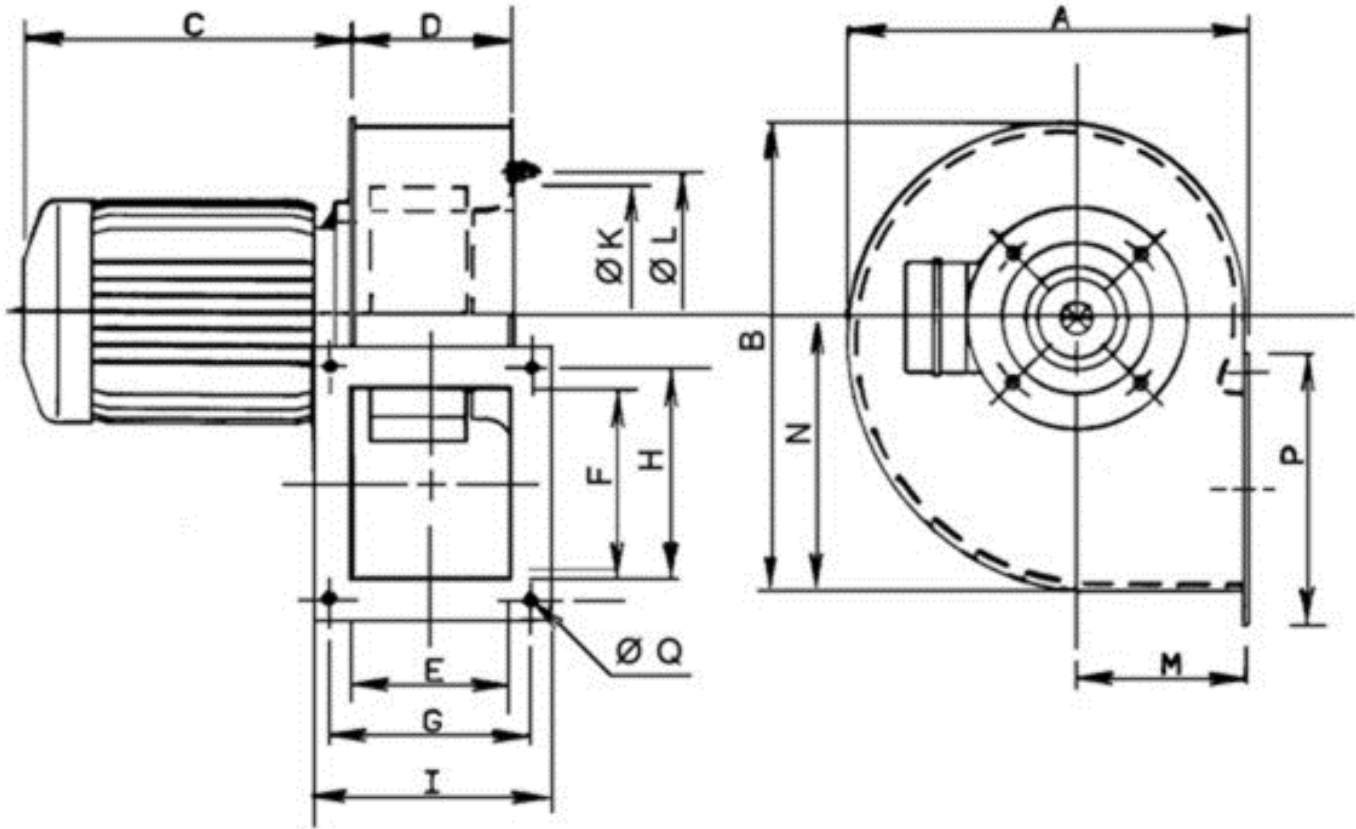




CMB/CMT

5130206500 - CMB/2-160/060 0,37KW (230V50HZ)LG270 VE

Drawing

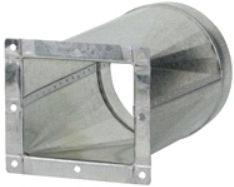


A	B	C	D	E	F	G	H	I	K	L	M	N	P	Q	Z
254	293	207	102.5	100	120	128	148	153	166	180	109	171	172	7.5	309.5

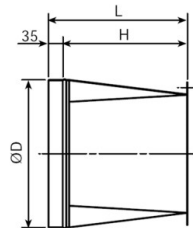
Accessories

5130304800 - KMBI-160

connector rectangular/circular to install on the discharge of CMT.



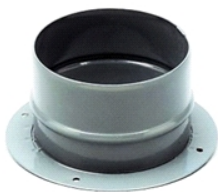
Dimensions



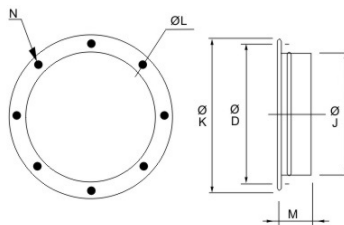
L	H	D
235	200	160

5130802100 - KBA-160

INLET FLANGE



Dimensions



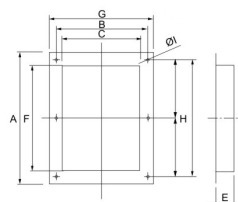
I	D	K	J	L	M	N
7	180	205	160	7	65	4

5130816100 - KBD-160

DISCHARGE FLANGE



Dimensions



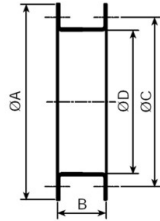
A	B	C	D	E	F	G	H
172	128	103	160	40	122	153	148

5130307300 - KMBD-160



Flange for mounting at the CMT fan inlet.

Dimensions



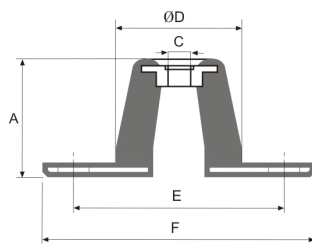
A	B	C	D
205	80	180	160

5130861700 - KSE-45



Rubber anti-vibration mounts that absorb vibration and attenuate the noise produced in the installation. (1 KSE = 4 supports in a bag)

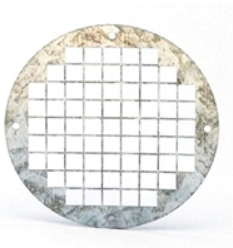
Dimensions



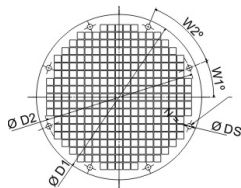
A	C	D	E	F
24	8	30	65	90

5130868200 - KRJ-160

INLET WIRE PROTECTION GUARD



Dimensions



D1	D2	DS	N	W2
200	180	7	8	45



CMB/CMT

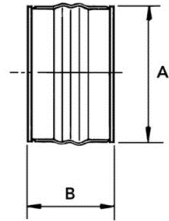
5130206500 - CMB/2-160/060 0,37KW (230V50HZ)LG270 VE

5138920300 - ACOPEL F400-160/160 N

FLEXIBLE CONNECTOR



Dimensions



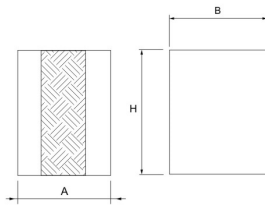
A	B
163	160

5130848400 - KAD-160

RECTANGULAR FLEXIBLE CONNECTOR



Dimensions



A	H	B
165	123	104