



## SLIMBOX-CVB

5137282900 - CVB-350/125 SLIM BOX (230V 50/60HZ) R8 - ACOUSTIC CABINET FANS



Low profile fan manufactured from heavy gauge galvanised sheet steel, with melamine foam flame retardant acoustic insulation M1. Supplied with a removable cover closing hermetically single inlet forward curved impeller centrifugal fan with single phase external rotor motor. Remote terminal box. Brand S&P model CVB-350/125 SLIM BOX (230V 50/60HZ) R8.

### Theoretical Working Point

Airflow	-
Static Pressure	0,000 Pa
Temperature	20 °C
Altitude	0 m
Density	1,2 kg/m <sup>3</sup>
Frequency	50 Hz

### Construction

Discharge diameter	125 mm
Fan size	350/125
Weight	6,20 kg

### Motor Characteristics

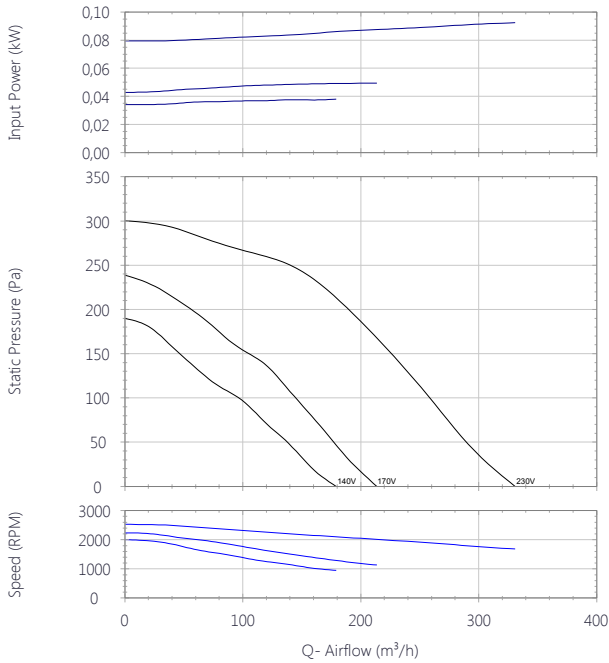
Number of poles	2
Voltage	1-230V-50Hz
Maximum absorbed current	0,4 A
IP Rating	IP44
Motor insulation class	B



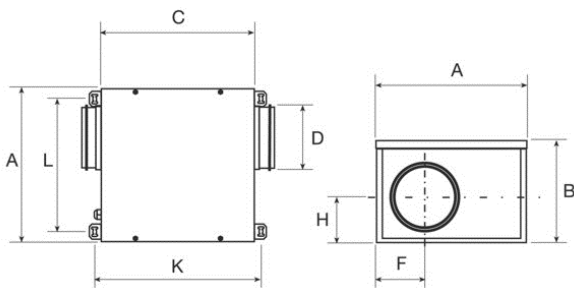
# SLIMBOX-CVB

5137282900 - CVB-350/125 SLIM BOX (230V 50/60HZ) R8 - ACOUSTIC CABINET FANS

## Performance Chart



## Drawing



A	B	C	D	F	H	L	K
308.5	213	315.5	125	97	93.7	271.6	340

## Sound Performance

	63	125	250	500	1k	2k	4k	8k	Overall
<b>Inlet (LwA)</b>	41	56	50	54	53	46	40	36	60
<b>Inlet LpA @ 1m</b>	30	45	39	43	42	35	29	25	49
<b>Outlet (LwA)</b>	34	57	55	57	63	63	59	57	68
<b>Outlet LpA @ 1m</b>	23	46	44	46	52	52	48	46	57
<b>Breakout (LwA)</b>	41	53	47	44	43	39	30	26	55
<b>Breakout LpA @ 1m</b>	30	42	36	33	32	28	19	15	44

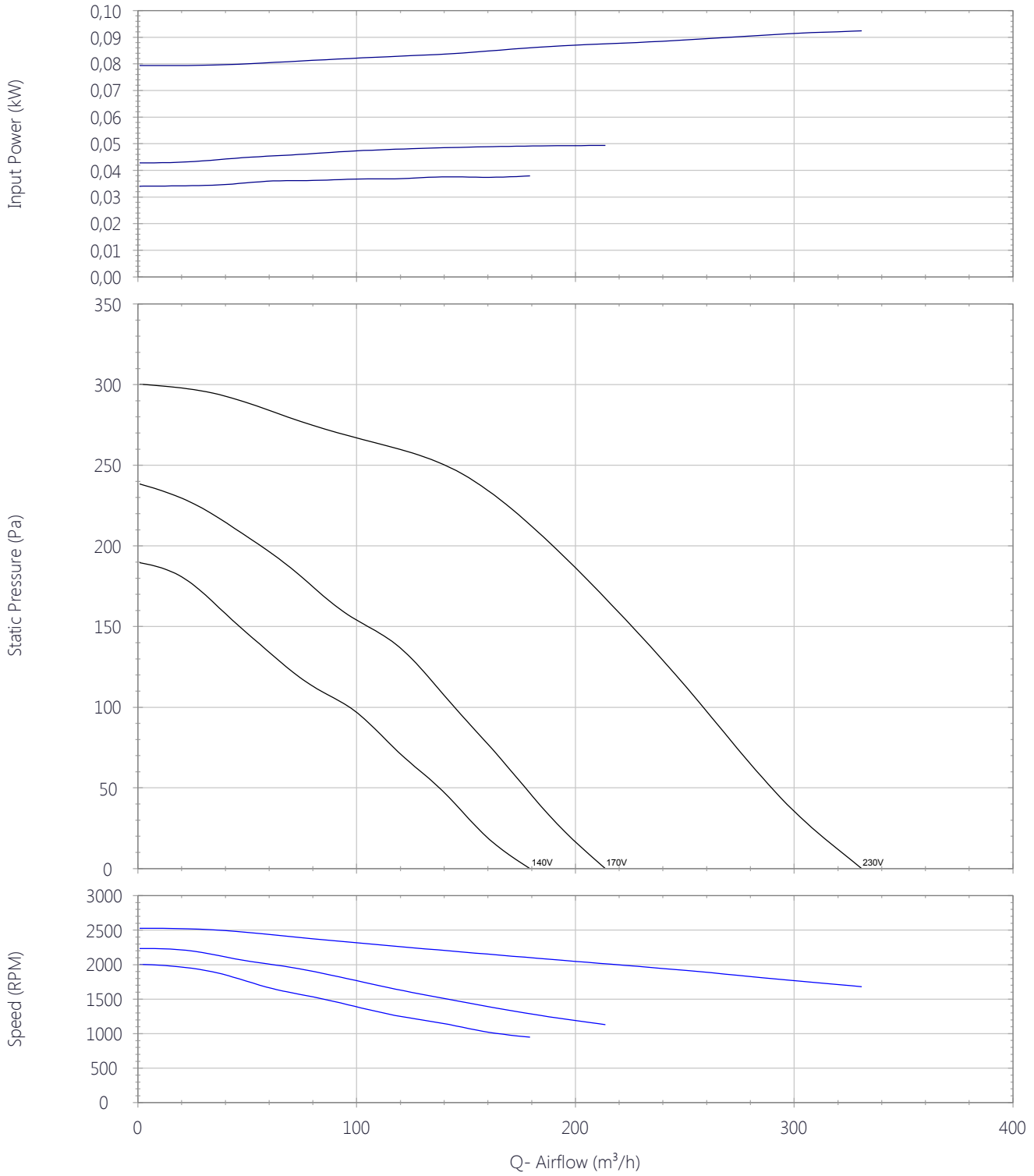




# SLIMBOX-CVB

5137282900 - CVB-350/125 SLIM BOX (230V 50/60HZ) R8 - ACOUSTIC CABINET FANS

## Performance Chart





# SLIMBOX-CVB

5137282900 - CVB-350/125 SLIM BOX (230V 50/60HZ) R8 - ACOUSTIC CABINET FANS

## Sound Performance

	63	125	250	500	1k	2k	4k	8k	Overall
<b>Inlet (LwA)</b>	41	56	50	54	53	46	40	36	60
<b>Inlet LpA @ 1m</b>	30	45	39	43	42	35	29	25	49
<b>Outlet (LwA)</b>	34	57	55	57	63	63	59	57	68
<b>Outlet LpA @ 1m</b>	23	46	44	46	52	52	48	46	57
<b>Breakout (LwA)</b>	41	53	47	44	43	39	30	26	55
<b>Breakout LpA @ 1m</b>	30	42	36	33	32	28	19	15	44

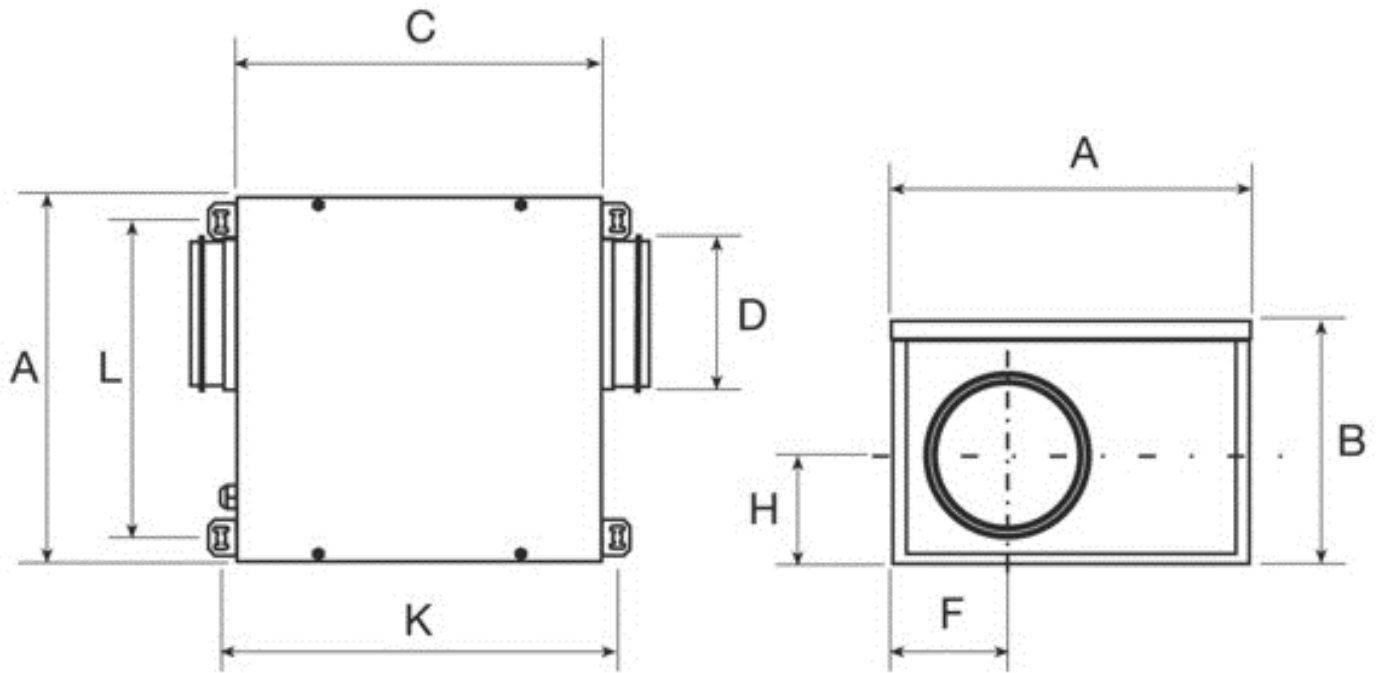




# SLIMBOX-CVB

5137282900 - CVB-350/125 SLIM BOX (230V 50/60HZ) R8 - ACOUSTIC CABINET FANS

## Drawing



A	B	C	D	F	H	L	K
308.5	213	315.5	125	97	93.7	271.6	340

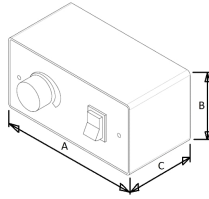
## Accessories

### L0111000000081 - REB-1 230V 50/60 ELECTRONIC SPEED CONTROLLER

Electronic single phase speed controller, 3-wire control, surface mounted, fuse protected with separate on/off switch.



#### Dimensions



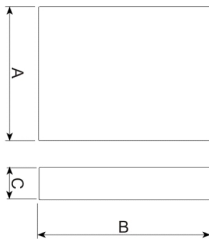
A	B	C
105	83	40

### 5401620900 - CONTROL ECOWATT AC/4A (230VAC 50HZ)



Control element for demand controlled ventilation systems in public, commercial residential building it automatically modifies the fan speed to adapt it to the needs defined in the system, measured with sensors. It has three basic modes of operation: 1. Integral proportional control at constant pressure. 2. Proportional control with maximum demand criteria with multiple sensor input: temperature, CO2 and relative humidity. 3. Minimum-maximum control with three-sensor input: CO2, temperature, relative humidity or presence detectors (PIR). DC signal output of 1 to 10 V or signal output for AC voltage variation for single phase motors at 230 V. ECOWATT C CONTROL: for single phase ventilation units. ECOWATT C CONTROL: for DC ventilation units. Power supply:- AC model: 1~230 V. - DC model: 1~230 V or 24 VDC..

#### Dimensions



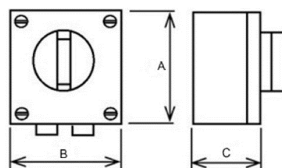
B	H	T
165	220	110

### 5401306500 - COM-3

Three-speed switch.Fan ON/OFF and speed selector.Maximum current rating 4A.



#### Dimensions



A	B	C
90	90	75



# SLIMBOX-CVB

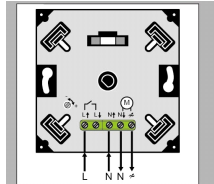
5137282900 - CVB-350/125 SLIM BOX (230V 50/60HZ) R8 - ACOUSTIC CABINET FANS

5401270300 - REB-1 N (230V 50)



Electronic speed controller

### Dimensions



Modell	Zul. Gerätstrom [A]
REB-1 N	0,1 – 1,0
REB-2,5 N	0,25 – 2,5

A	B	C
80	22	46

5401271100 - REB-1 N E (230V 50)



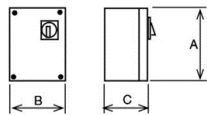
Electronic speed controller

5401245500 - RMB-1,5 (220V 50Y60)

AUTOTRANSFORMER SPEED CONTROLLER



### Dimensions



A	B	C
230	180	95



# SLIMBOX-CVB

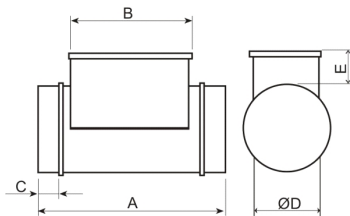
5137282900 - CVB-350/125 SLIM BOX (230V 50/60HZ) R8 - ACOUSTIC CABINET FANS

5211801500 - MBE-125/12B 1/230V



Electric Heater Battery

### Dimensions



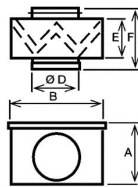
A	B	C	D	E
400	285	50	125	105

5416591500 - MFL-125 G4



MFL filtration boxes are of G4 grade filtration and are designed for direct connection with standard circular ducting. The MFL-G4 filtration boxes are supplied with a cover easily removable to replace the filter.

### Dimensions



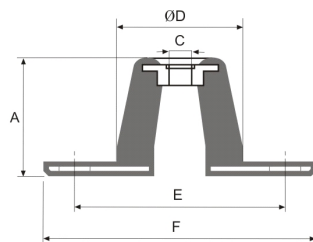
A	B	D	E	d
206	229	125	154	218

5130861700 - KSE-45

Rubber anti-vibration mounts that absorb vibration and attenuate the noise produced in the installation. (1 KSE = 4 supports in a bag)



### Dimensions



A	C	D	E	F
24	8	30	65	90





# SLIMBOX-CVB

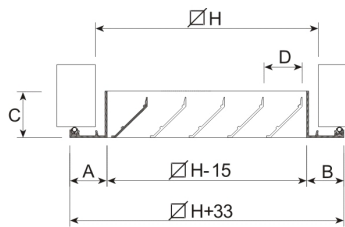
5137282900 - CVB-350/125 SLIM BOX (230V 50/60HZ) R8 - ACOUSTIC CABINET FANS

5416480100 - GRI-125



Extract louvre grilles manufactured from aluminium and finished with an epoxy polyester paint coating.

### Dimensions



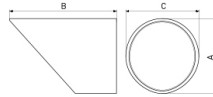
C	D	H	A	B
30	25	125	24	24

5137914700 - APC 125



Protection guards for direct connection to the inlet-outlet fan flange connector.

### Dimensions



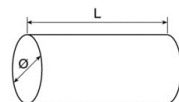
A	B
125	232

5209192100 - GSA-M0 125 10M



Flexible aluminium ducts made of a aluminium and polyester exterior covering a spiral steel wire frame. Used for general installations in detached or collective housing and commercial premises.

### Dimensions



d	L
125	10000



# SLIMBOX-CVB

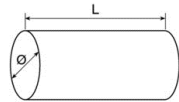
5137282900 - CVB-350/125 SLIM BOX (230V 50/60HZ) R8 - ACOUSTIC CABINET FANS

5209150400 - GSA-M0 125 3M



Flexible aluminium ducts made of a aluminium and polyester exterior covering a spiral steel wire frame. Used for general installations in detached or collective housing and commercial premises.

### Dimensions



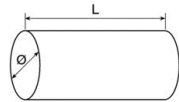
d	L
125	3000

5416464500 - GSI-M0/M1 125 10M

INSULATED ALUMINIUM FLEXIBLE DUCTING



### Dimensions



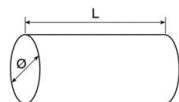
D	L
125	10

5209192300 - GSI-M0/M1 125 3M

INSULATED ALUMINIUM FLEXIBLE DUCTING



### Dimensions



D	L
125	3



# SLIMBOX-CVB

5137282900 - CVB-350/125 SLIM BOX (230V 50/60HZ) R8 - ACOUSTIC CABINET FANS

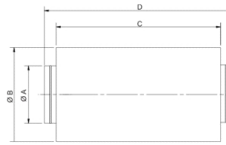
5211809800 - SIL-125

Silencer to be installed either at the inlet or outlet of the fan.



Corrections							
63	125	250	500	1k	2k	4k	8k
-4	-6	-10	-19	-28	-33	-25	-18

## Dimensions



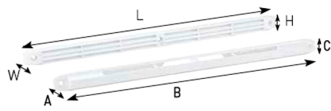
A	B	C	D
125	225	600	700

5209161900 - EC 22 N BLANCO RAL 9016

Self-regulating air vents, manufactured in white or brown polystyrene. Guaranteeing air renewal in a home through the main rooms (Living room, sitting room and bedrooms). Enabling an airflow of 22, 30 and 45 m<sup>3</sup>/h. Fitted either to carpentry elements (in openings measuring 354x12 mm) or connected to a wall feedthrough tube. The EC N air vent can have a cover that includes an insect grille, available in white or brown.



## Dimensions



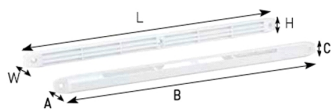
A	B	C	H	L	W
20	305	18	20	295	8

5209162000 - EC 30 N BLANCO RAL 9016

Self-regulating air vents, manufactured in white or brown polystyrene. Guaranteeing air renewal in a home through the main rooms (Living room, sitting room and bedrooms). Enabling an airflow of 22, 30 and 45 m<sup>3</sup>/h. Fitted either to carpentry elements (in openings measuring 354x12 mm) or connected to a wall feedthrough tube. The EC N air vent can have a cover that includes an insect grille, available in white or brown.



## Dimensions



A	B	C	H	L	W
20	305	18	20	295	8



# SLIMBOX-CVB

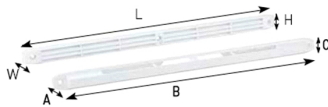
5137282900 - CVB-350/125 SLIM BOX (230V 50/60HZ) R8 - ACOUSTIC CABINET FANS

## 5209162100 - EC 45 N BLANCO RAL 9016

Self-regulating air vents, manufactured in white or brown polystyrene. Guaranteeing air renewal in a home through the main rooms (Living room, sitting room and bedrooms). Enabling an airflow of 22, 30 and 45 m<sup>3</sup>/h. Fitted either to carpentry elements (in openings measuring 354x12 mm) or connected to a wall feedthrough tube. The EC N air vent can have a cover that includes an insect grille, available in white or brown.



### Dimensions



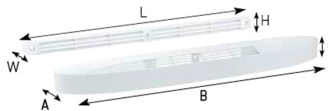
A	B	C	H	L	W
24	390	20	23	400	12

## 5209163400 - ECA 22 BLANCO RAL9016

Self-regulating air vents, manufactured from injection moulded polystyrene and available in three air volume range (22, 30, 36 and 45 m<sup>3</sup>/h). Fitted in openings measuring 354x12 mm. Suitable for installation on window joinery by crews. The air inlet acoustic element is placed on the indoor side while the cover is fitted on the external side of the joinery. An additional acoustic element can be slot into the air inlet (ECA+RA).



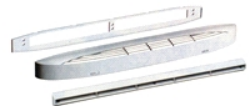
### Dimensions



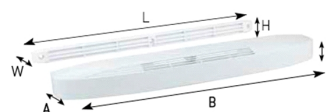
A	B	C	H	L	W
45	422	45	23	400	12

## 5209162500 - ECA 22 RA BLANCO RAL 9016

Self-regulating air vents, manufactured from injection moulded polystyrene. They allow air renewal in a house via main rooms (living room, dining room, bathroom). Airflow of 22, 30, 36 and 45 m<sup>3</sup>/h. It can be installed on carpentry elements or joined to a wall bypass sleeve.



### Dimensions



A	B	C	H	L	W
69	422	45	23	400	12



# SLIMBOX-CVB

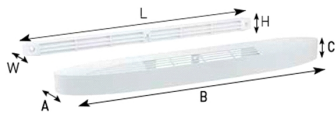
5137282900 - CVB-350/125 SLIM BOX (230V 50/60HZ) R8 - ACOUSTIC CABINET FANS

## 5209163700 - ECA 30 BLANCO RAL9016

Self-regulating air vents, manufactured from injection moulded polystyrene and available in three air volume range (22, 30, 36 and 45 m3/h). Fitted in openings measuring 354x12 mm. Suitable for installation on window joinery by crews. The air inlet acoustic element is placed on the indoor side while the cover is fitted on the external side of the joinery. An additional acoustic element can be slot into the air inlet (ECA+RA).



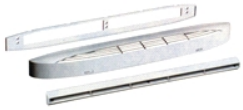
### Dimensions



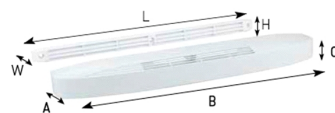
A	B	C	H	L	W
45	422	45	23	400	12

## 5209162600 - ECA 30 RA BLANCO RAL 9016

Self-regulating air vents, manufactured from injection moulded polystyrene. They allow air renewal in a house via main rooms (living room, dining room, bathroom). Airflow of 22, 30, 36 and 45 m3/h. It can be installed on carpentry elements or joined to a wall bypass sleeve.



### Dimensions



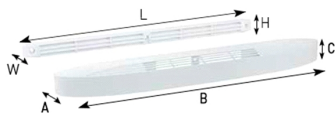
A	B	C	H	L	W
69	422	45	23	400	12

## 5209172100 - ECA 36 BLANCO RAL9016

Self-regulating air vents, manufactured from injection moulded polystyrene and available in three air volume range (22, 30, 36 and 45 m3/h). Fitted in openings measuring 354x12 mm. Suitable for installation on window joinery by crews. The air inlet acoustic element is placed on the indoor side while the cover is fitted on the external side of the joinery. An additional acoustic element can be slot into the air inlet (ECA+RA).



### Dimensions



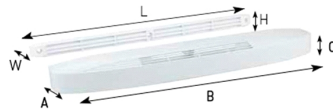
A	B	C	H	L	W
45	422	45	23	400	12

## 5209172200 - ECA 36 RA BLANCO RAL 9016



Self-regulating air vents, manufactured from injection moulded polystyrene. They allow air renewal in a house via main rooms (living room, dining room, bathroom). Airflow of 22, 30, 36 and 45 m<sup>3</sup>/h. It can be installed on carpentry elements or joined to a wall bypass sleeve.

### Dimensions



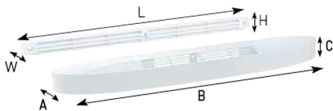
A	B	C	H	L	W
69	422	45	23	400	12

## 5209164000 - ECA 45 BLANCO RAL9016



Self-regulating air vents, manufactured from injection moulded polystyrene and available in three air volume range (22, 30, 36 and 45 m<sup>3</sup>/h). Fitted in openings measuring 354x12 mm. Suitable for installation on window joinery by crews. The air inlet acoustic element is placed on the indoor side while the cover is fitted on the external side of the joinery. An additional acoustic element can be slot into the air inlet (ECA+RA).

### Dimensions



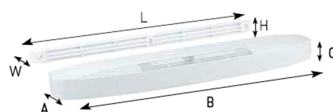
A	B	C	H	L	W
45	422	45	23	400	12

## 5209162700 - ECA 45 RA BLANCO RAL 9016



Self-regulating air vents, manufactured from injection moulded polystyrene. They allow air renewal in a house via main rooms (living room, dining room, bathroom). Airflow of 22, 30, 36 and 45 m<sup>3</sup>/h. It can be installed on carpentry elements or joined to a wall bypass sleeve.

### Dimensions



A	B	C	H	L	W
69	422	45	23	400	12



# SLIMBOX-CVB

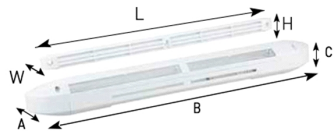
5137282900 - CVB-350/125 SLIM BOX (230V 50/60HZ) R8 - ACOUSTIC CABINET FANS

## 5209172400 - ECA HY 6/45 BLANCO RAL 9016



Humidity adjustable acoustic air vents for renewing air in the main rooms of flats and detached homes. They guarantee a variable flow of 6 to 45 m<sup>3</sup>/h according to the degree of humidity in the room, for a pressure difference of 20 Pa. It can be installed on carpentry elements or joined to a wall bypass sleeve.

### Dimensions



A	B	C	H	L	W
45	420	40	23	400	12

## 5209172500 - ECA HY 6/45 RA BLANCO RAL 9016



Humidity adjustable air vents with an acoustic frame for renewing air in the main rooms of flats and detached homes. The acoustic frame offers great noise attenuation. They guarantee a variable flow of 6 to 45 m<sup>3</sup>/h according to the degree of humidity in the room, for a pressure difference of 20 Pa. It can be installed on carpentry elements or joined to a wall bypass sleeve.

### Dimensions



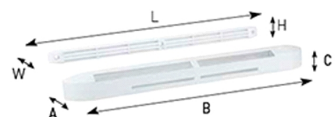
A	B	H
420	23	24

## 5209172300 - EC HY 6/45 BLANCO RAL 9016



Humidity adjustable air vents for renewing air in the main rooms of flats and detached homes. They guarantee a variable flow of 6 to 45 m<sup>3</sup>/h according to the degree of humidity in the room, for a pressure difference of 20 Pa. It can be installed on carpentry elements or joined to a wall bypass sleeve.

### Dimensions



A	B	C	H	L	W
40	400	30	23	400	12



# SLIMBOX-CVB

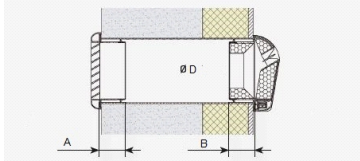
5137282900 - CVB-350/125 SLIM BOX (230V 50/60HZ) R8 - ACOUSTIC CABINET FANS

## 5209195800 - SILEM KIT 22



Humidity adjustable air vents with sound attenuator.SILEM KIT HY allows air renewal in a house via main rooms (living room, dining room, bathroom).Airflow of 22 and 30 m3/h They are fitted into the wall. With this purpose, it is included a sheet metal sleeve (Ø 125 mm and 300 mm length) and external facade grille.

### Dimensions



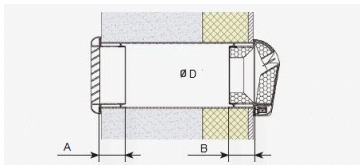
A	B	D
46	48	125

## 5209195900 - SILEM KIT 30



Humidity adjustable air vents with sound attenuator.SILEM KIT HY allows air renewal in a house via main rooms (living room, dining room, bathroom).Airflow of 22 and 30 m3/h They are fitted into the wall. With this purpose, it is included a sheet metal sleeve (Ø 125 mm and 300 mm length) and external facade grille.

### Dimensions



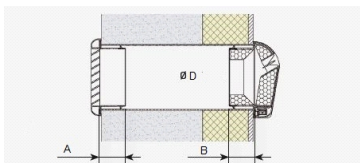
A	B	D
46	48	125

## 5209196100 - SILEM KIT HY 125



Humidity adjustable air vents with sound attenuator.SILEM KIT HY allows air renewal in a house via main rooms (living room, dining room, bathroom).Airflow of 22 and 30 m3/h They are fitted into the wall. With this purpose, it is included a sheet metal sleeve (Ø 125 mm and 300 mm length) and external facade grille.

### Dimensions



A	B	D
46	48	125





# SLIMBOX-CVB

5137282900 - CVB-350/125 SLIM BOX (230V 50/60HZ) R8 - ACOUSTIC CABINET FANS

5416402500 - BOC-125

inlet connector at the end of the duct

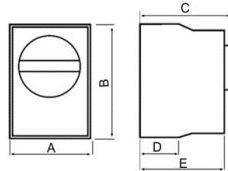


5401285100 - INTERRUPTOR PARO-MARCHA 5P

Rotatory switch. Maximum current rating 20 A. 5 wires for two speed motors. IP-66-IP-67 protection 3x380V, 440V.



### Dimensions



B	H	T
86	86	120

5416582400 - TG-K330 (STC)

Duct temperature sensor. Used in conjunction with electric heater and controller. NTC type with liner scale. Protection class IP20.- TG-K330: from 0 to 30°C.

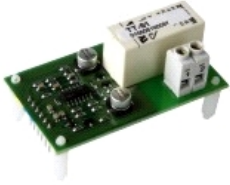


5416578200 - TG-R530 (STA)

Used in conjunction with electric heaters and controllers. NTC type with liner scale. Range of temperature 0-30°C. Protection class IP30.- Room sensor without set point adjustment, 0-30°C (TG-R530).

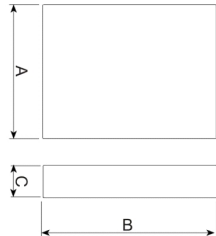


5132868000 - TT-S1



POWER AMPLIFIER

Dimensions



A	B	C
30	60	35

5416354800 - PULSER M



Single phase electric heater controller. Supplementary unit for slave control from another PULSER to control electric heaters with power ratings high to the PULSER capacity (3600W-230V).

Dimensions



A	B	C
83	153	40

5416365400 - PULSER-ADD



Single phase electric heater controller. Set point: 0-30°C, the sensor determines the scale range (for use with NTC-sensor). Output (load): 16 A (min. 1 A). Protection class: IP30. Input regulation maximum and minimum. Maximum absorbed power: 3.6 kW.

Dimensions



A	B	C
83	153	40



# SLIMBOX-CVB

5137282900 - CVB-350/125 SLIM BOX (230V 50/60HZ) R8 - ACOUSTIC CABINET FANS

5145820600 - ACOP-VENT-125 (V977502)



FLEXIBLE CONNECTOR

5416411600 - CX-125/215

WORM DRIVE DUCT CLIPS



### Dimensions



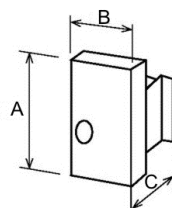
Dmin	Dmax
125	215

5132867200 - TTC-2000 (REG-16)



ELECTRICAL HEATER BATTERY CONTROLLER

### Dimensions



A	B	C
280	160	140



# SLIMBOX-CVB

5137282900 - CVB-350/125 SLIM BOX (230V 50/60HZ) R8 - ACOUSTIC CABINET FANS

## ErP Data

Ecodesign	
Commission regulation (EU) N°1253/2014 of July 2014	
Information requirements (Annex V)	
ProductoComercial	CVB-350/125 SLIM BOX (230V 50/60HZ) R8
Identifier	5137282900
SEC average climate (kWh/(m2.an))	-24,59
SEC class	C
SEC cold climate (kWh/(m2.an))	-52
SEC warm climate (kWh/(m2.an))	-9
Typology	RVU unidirectional
Type of drive	Variable speed drive
Type of HRC	None
Thermal efficiency (%)	0
Maximum flow rate (m3/h)	258
Electrical power input at maximum flow rate (W)	89,36
Sound power level (LWA)	43
Reference flow rate (m3/s)	0,0508
Reference pressure difference (Pa)	50
SPI (W/m3/h)	0,2805
Control factor	0,65
Control typology	Local demand
Maximum internal leakage for BVU (%)	Not applicable
Maximum external leakage for BVU and UVU (%)	5
Mixing rate for BVU without duct connection (%)	Not applicable
Position of visual filter warning	Not applicable
description of visual filter warning	Not applicable
Instructions to install supply grilles	F&W Leaflet
Instructions to install exhaust grilles	F&W Leaflet
<a href="https://www.solerpalau.com/">https://www.solerpalau.com/</a>	
Airflow sensitivity to pressure variation	Not applicable
Indoor/outdoor air tighness (m3/h)	Not applicable
Annual electricity consumption - Average climate (kWh/a)	148,48
Annual electricity consumption - Warm climate (kWh/a)	148,48
Annual electricity consumption - Cold climate (kWh/a)	148,48
Annual heating saved - Average climate (kWh/a)	2830
Annual heating saved - Warm climate (kWh/a)	1279,69
Annual heating saved - Cold climate (kWh/a)	5536,23

