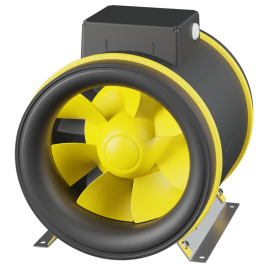


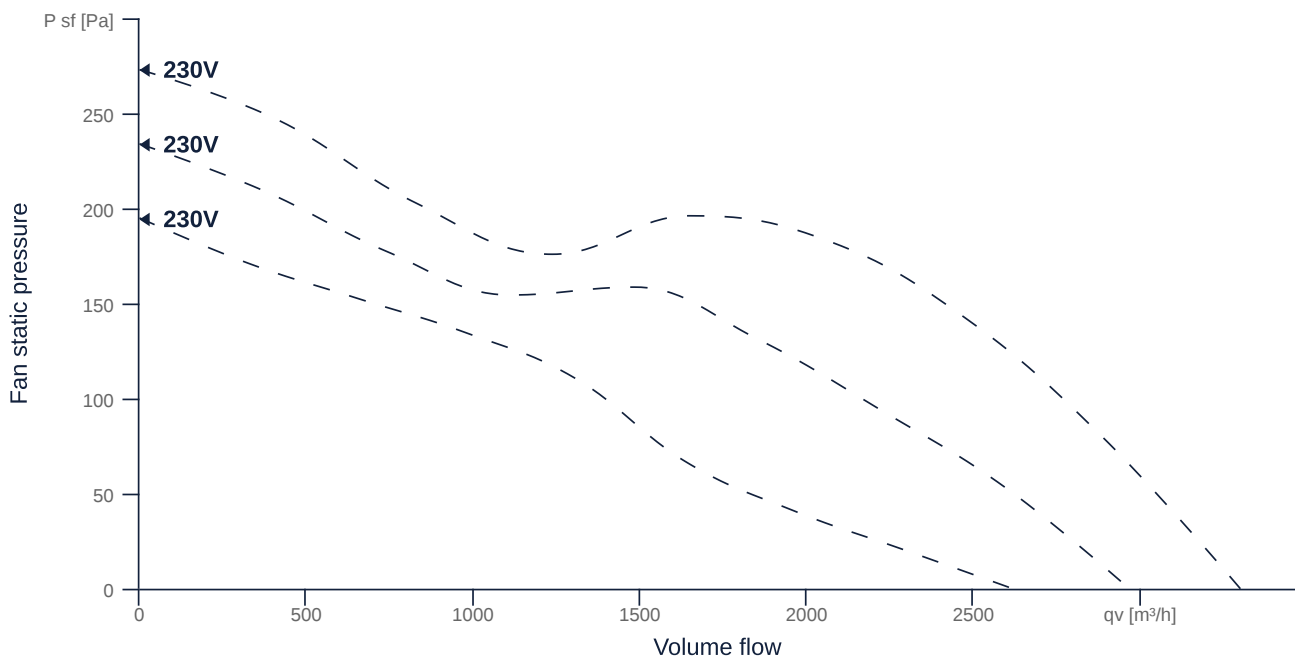
EM 400 E4M 01

129165

- Innovative, high-efficiency diagonal fan
- Optimally tuned, CFD-optimized aerodynamics
- Housing made of impact-resistant, reinforced polypropylene
- Robust AC motor, 3-steps controllable
- Conveyed medium temperature up to 60 °C in continuous operation
- The benchmark for efficiency since 2012



MAP



GENERAL DATA

Name	Value	Unit	Formula symbol
Duct size	-		WxH _{duct}
Pipe connection size (DN)	DN400		DN
Electrical protection (entire device)	6 A		fuse
Housing material	Plastic		matcasing
Impeller material	Plastic		matimpeller
IP-protection class (entire device)	IPX4		IP _{compl}
IP-Protection class (terminal box)	IP44		IP _{ebox}
Weight	15.7	kg	m
Fan type	Diagonal		Fan _{type}
Category / Installation situation	A		cat
Sound insulation	No		snd _{ins}
Rated voltage (entire device)	230	V	U _{rated}
Phases (entire device)	1~		phase



zur Produktseite

EM 400 E4M 01

129165

MAXIMAL DATA

Name	Value	Unit	Formula symbol
Max. power consumption (device)	211	W	$P_{ed, max}$
Max. operating current (device)	1	A	$I_{ed, max}$
Max. speed	1440	1/min	n_{max}
Max. stat. efficiency	47.2	%	η_{es}
Max. fan efficiency	51	%	η_e
Max. flowrate	3300	m ³ /h	$q_{v, max}$
Max. stat pressure	270	Pa	$p_{sf, max}$
Max. medium temperature	60	°C	$T_{m, max}$
Max. environment temperature	60	°C	$T_{amb, max}$
Min. environment temperature	-25	°C	$T_{amb, min}$
Min. voltage	230	V	U_{min}

MOTOR DATA

Name	Value		Unit	Formula symbol
	50 Hz	60 Hz		
Rated frequency (device)	50.000000			f
Motor type	AC 1~			phase
Installation	IRM (In)			install
Rotation direction	right			rotation
Isolation class	ISO F			ISO _{class}
Motor-protection	TAI			protect _{motor}
Protection class	IP00			IP _{motor}
Is pole-changeable	No			polexch
Type of power supply	AC 1~			pwr _{sup} _{motor}
Capacity condenser	7		µF	C _{cond}
Voltage condenser	450		V	VU _{cond}
Number of poles (1)	4.000000			num poles _{w1}
Rated voltage	230		V	U _{rated, f1}
Rated current	1.05		A	I _{rated, f1}
Shaft power	120		W	P _{out, f1}
Cos Phi	0.000000	0.000000		cos φ

PRODUCT INFORMATION

Name	Value	Unit	Formula symbol
Category / Installation situation	A		cat
Fan type	Diagonal		Fan _{type}



zur Produktseite

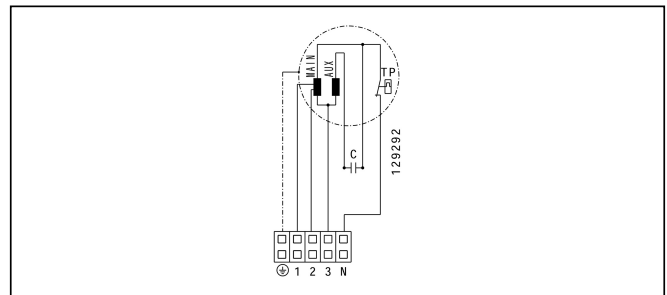
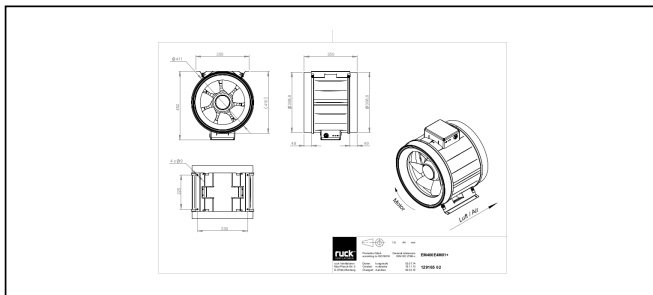
EM 400 E4M 01

129165

ERP DATA

Name	Value	Unit	Formula symbol
Speed at the energy efficiency optimum	1414	1/min	n_{opt}
Efficiency level	47.5	%	N
Efficiency category	statisch		$\eta_{efficiency}$
Input power of the motor at the energy efficiency optimum	0.21	kW	$P_{e, opt}$
Overall efficiency	65.2	%	η_{ges}
Measurement category	A		meas cat
Fan pressure at optimum energy efficiency point	178	Pa	$p_{f, opt}$
Flowrate at energy efficiency optimum	2118	m^3/h	$q_{v, opt}$

SCHALTPLÄNE / MASSZEICHNUNGEN



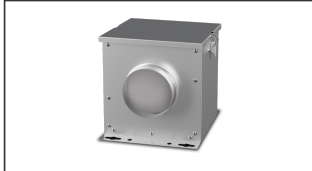
zur Produktseite

EM 400 E4M 01

129165

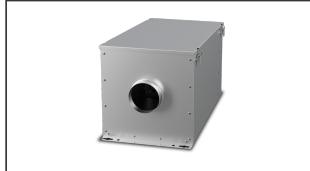
MECHANICAL ACCESSORIES

FV 400 | 112836



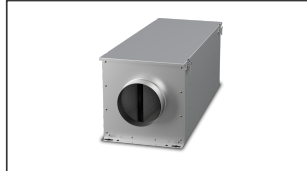
- Air filter box with mat filter ISO Coarse 45 % (G3)
- Toggle-type fastener

FT 400 | 112848



- Air filter box for pocket filter
- Toggle-type fastener
- Galvanized steel sheet housing
- Without filter

FTW 400 | 112857



- Air filter box for pocket filter M5
- Integrated warm water heating coil
- Galvanized steel sheet housing
- Without filter

RSK 400 | 102691



- Back draught shutter for tube fitting
- Galvanized steel sheet housing
- Aluminum flaps

RSK 400D | 113490



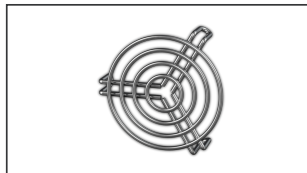
- Back draught shutter for tube fitting
- Galvanized steel sheet housing
- Aluminum flaps
- Integrated gasket

VM 400 | 102654



- Fast clamps for sound decoupling and sealing
- Galvanized steel sheet, 5 mm
- Neopren gasket
- 1 Pack = 2 pieces

SG 400 01 | 134284



- Inlet protection grille for Etaline
- Galvanized steel sheet

SDF 400 | 102708



- Flexible tube silencer
- Galvanized steel sheet
- Sound insulation packing 50 mm

SDS 400 | 102727



- Rigid tube silencer
- Galvanized steel sheet
- Sound insulation packing 50 mm (mineral wool)

ELECTRICAL ACCESSORIES

GS 03 | 107633



- Device switch
- $U_{max} = 400 \text{ V}$, $I_{max} = 25 \text{ A}$
- Switching capacity 400 V 3~ = 5,5 kW
- Protection class IP 55

MTS 10 | 128145



- 3-step switch
- Max. ambient temperature 50 °C
- Surface and flush mounting
- IP 44



zur Produktseite