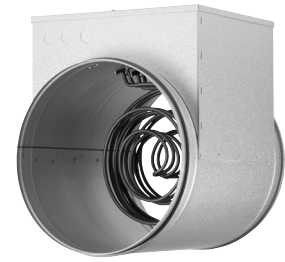




# ELECTRIC HEATER BATTERY

# ELECTRIC HEATER BATTERY

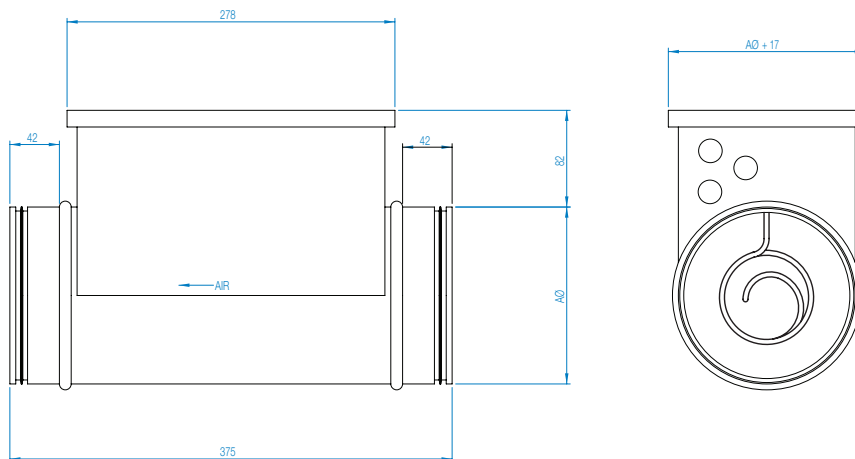
## Overview



### Type

CV – (E/M) duct heater with casing of Aluzinc-coated sheet steel and stainless steel heater element to EN 1.4301. The duct heaters conform to air tightness class C to EN 15727. Control takes place by an external regulator and sensor that must be ordered separately.

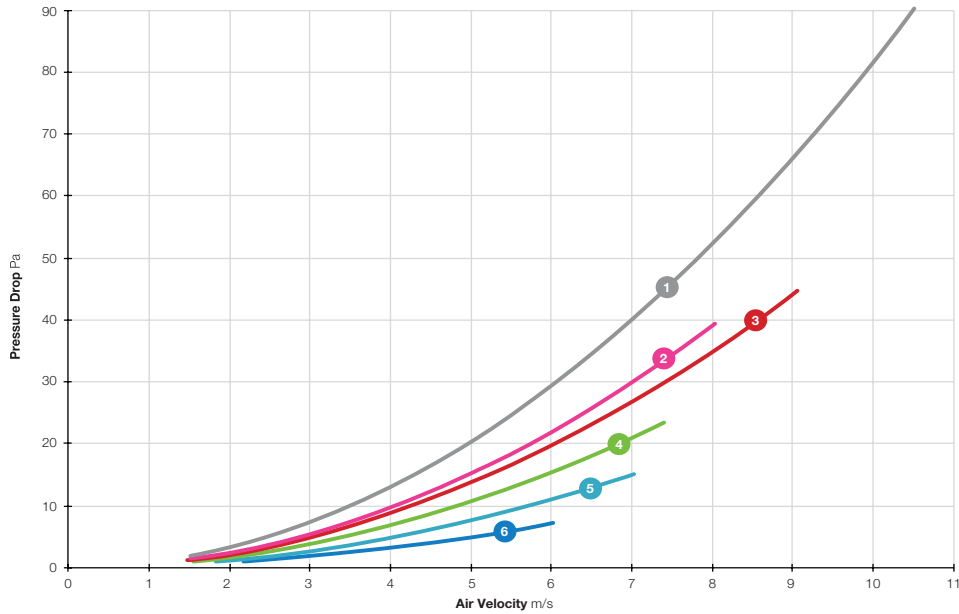
Product Code	kW	Phase	Airflow @ m <sup>3</sup> /s		A	Weight kg
			Min	Max		
<a href="#">018-CV10-06-1M</a>	0.6	1	0.012	0.046	100	2.3
<a href="#">018-CV12-12-1M</a>	1.2	1	0.019	0.093	125	3.0
<a href="#">018-CV15-27-1M</a>	2.7	1	0.031	0.208	150	4.2
<a href="#">018-CV16-21-1M</a>	2.1	1	0.031	0.162	160	4.3
<a href="#">018-CV20-30-1M</a>	3.0	1	0.047	0.231	200	5.9
<a href="#">018-CV25-30-1M</a>	3.0	1	0.075	0.231	250	7.8
<a href="#">018-CV31-30-1M</a>	3.0	1	0.115	0.231	315	8.3
<a href="#">018-CV31-45-1M</a>	4.5	1	0.115	0.347	315	8.3
<a href="#">018-CV31-90-3M</a>	9.0	3	0.115	0.694	315	8.3
<a href="#">018-CV35-90-3M</a>	9.0	3	0.192	0.694	355	9.1
<a href="#">018-CV40-90-3M</a>	9.0	3	0.192	0.694	400	9.7
<a href="#">018-CV40-120-3E</a>	12.0	3	0.192	0.926	400	9.7



Dimensions are in mm.

# ELECTRIC HEATER BATTERY

## Pressure Drop Curve



- 1 018-CV12-12-1M, 018-CV15-27-1M
- 2 018-CV16-21-1M
- 3 018-CV20-30-1M, 018-CV31-90-3M
- 4 018-CV40-120-3E
- 5 018-CV25-30-1M, 018-CV31-45-1M, 018CV35-90-3M, 018-CV40-90-3M
- 6 018-CV10-06-1M, 018-CV31-40-1M

## Building Services

Tel **+44 (0) 1384 275800**  
Fax **+44 (0) 1384 275810**  
Email **info@eltafans.co.uk**

46 Third Avenue, Pensnett Trading Estate, Kingswinford,  
West Midlands, DY6 7US United Kingdom

## Applied Technology & Building Services Export

Tel **+44 (0) 1489 566500**  
Fax **+44 (0) 1489 566555**  
Email **at@eltafans.co.uk / export@eltafans.co.uk**

17 Barnes Wallis Road, Segensworth East Industrial Estate,  
Fareham, Hampshire, PO15 5ST United Kingdom

**eltafans.com**

018-CV-03-2018 Issue A



BS EN ISO 9001:2008 FM 556465

