



JETLINE

5145895600 - JETLINE-100 (220/240V50/60HZ) RE - IN LINE DUCT FANS



In-line fan for circular duct with low profile compact casing manufactured from galvanised sheet steel and rubber gasket on the flanges. High performance impeller, guide vane and outlet diffuser manufactured from injection-moulded plastic, to increase performances and lower the sound level. IP55 terminal box fixed on the casing.

Mounting bracket supplied with the fan, enabling to mount the fan in two different positions and any shaft orientation

Motor

Single-phase external rotor motor assembled with antivibration mount to reduce vibration and noise level, 220-240V50/60Hz, IP44, class F, with thermal protection and speed regulable by tension.

Working temperature -20/60°C

Model JETLINE-100 (220/240V50/60HZ) RE.

Theoretical Working Point

Airflow	-
Static Pressure	0,000 Pa
Temperature	20 °C
Altitude	0 m
Density	1,2 kg/m ³
Frequency	50 Hz

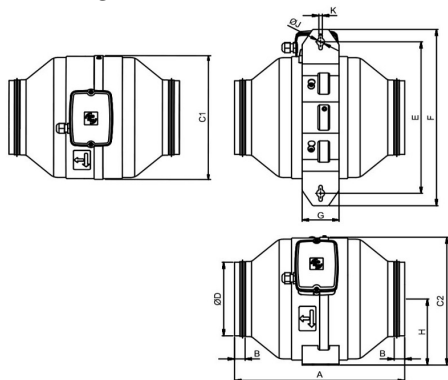
Construction

Discharge diameter	100 mm
Fan size	100

Motor Characteristics

Number of poles	2
Voltage	1-230V-50Hz
Maximum absorbed current	0,08 A
IP Rating	IP44
Motor insulation class	F

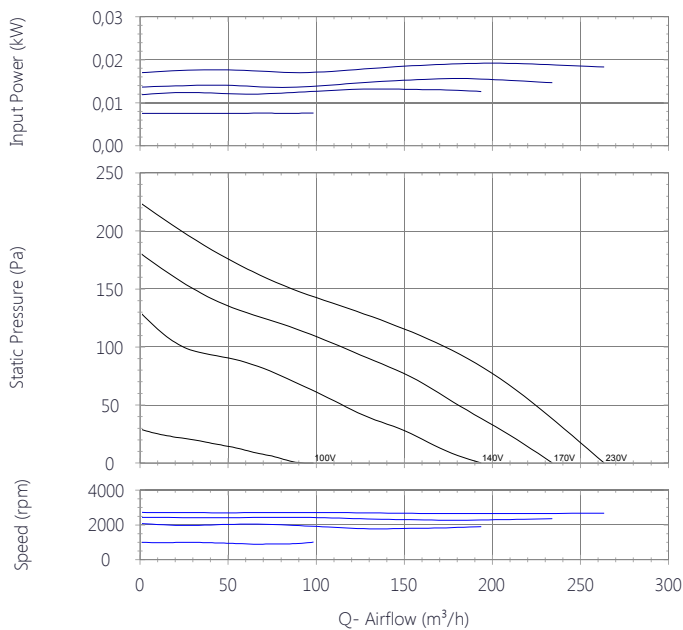
Drawing



A	B	C1	C2	øD	E	F	G	H
276	15	181	190	95	256	306	70	98

øJ	K
15	6.5

Performance Chart



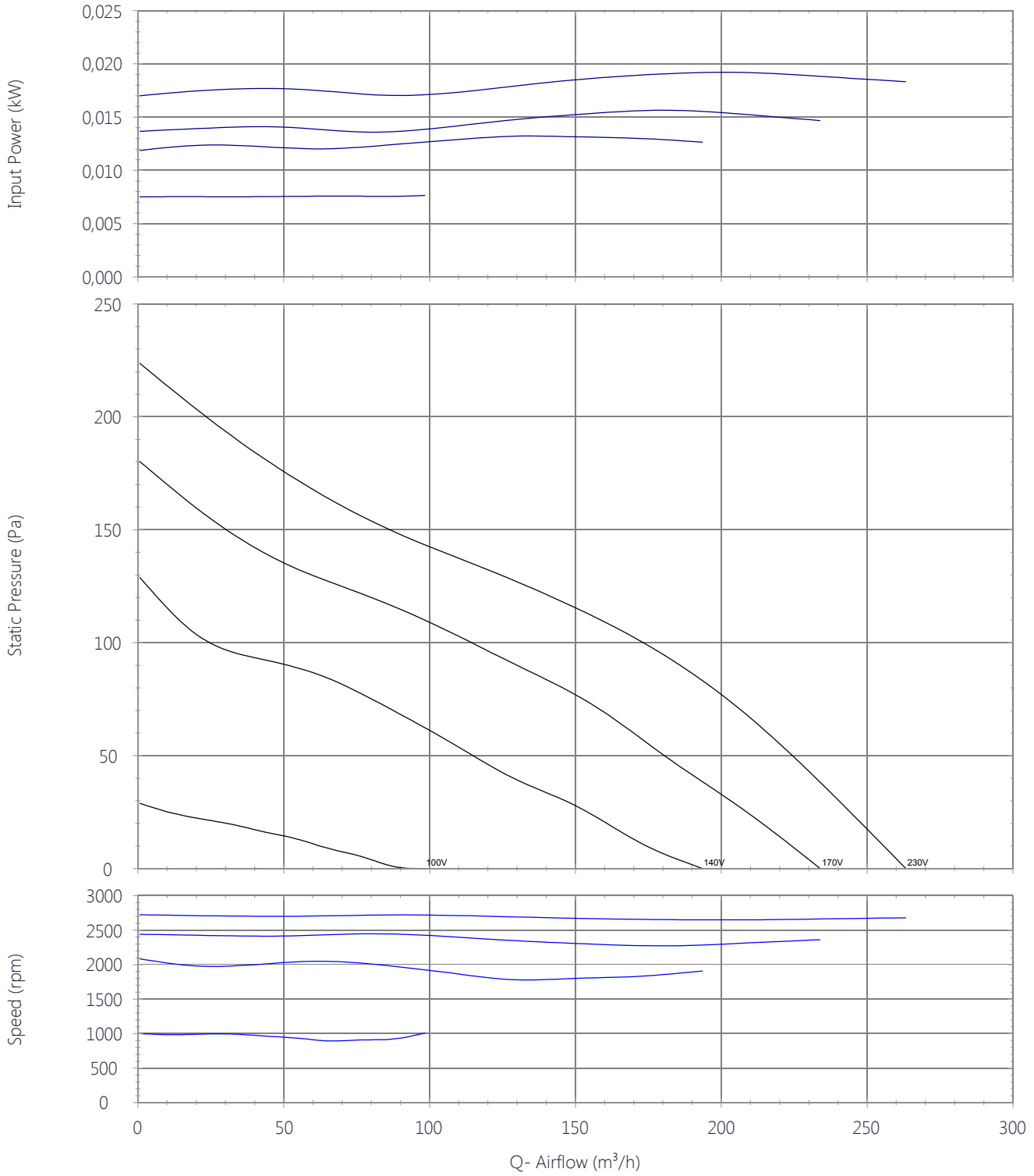
Sound Performance

	63	125	250	500	1k	2k	4k	8k	Overall
Inlet (LwA)	30	33	44	50	54	51	51	36	58
Inlet LpA @ 1m	19	22	33	39	43	40	40	25	47
Outlet (LwA)	27	32	45	49	50	49	46	34	55
Outlet LpA @ 1m	16	21	34	38	39	38	35	23	44
Breakout (LwA)	19	15	23	27	35	34	34	19	40
Breakout LpA @ 1m	8	4	12	16	24	23	23	8	29

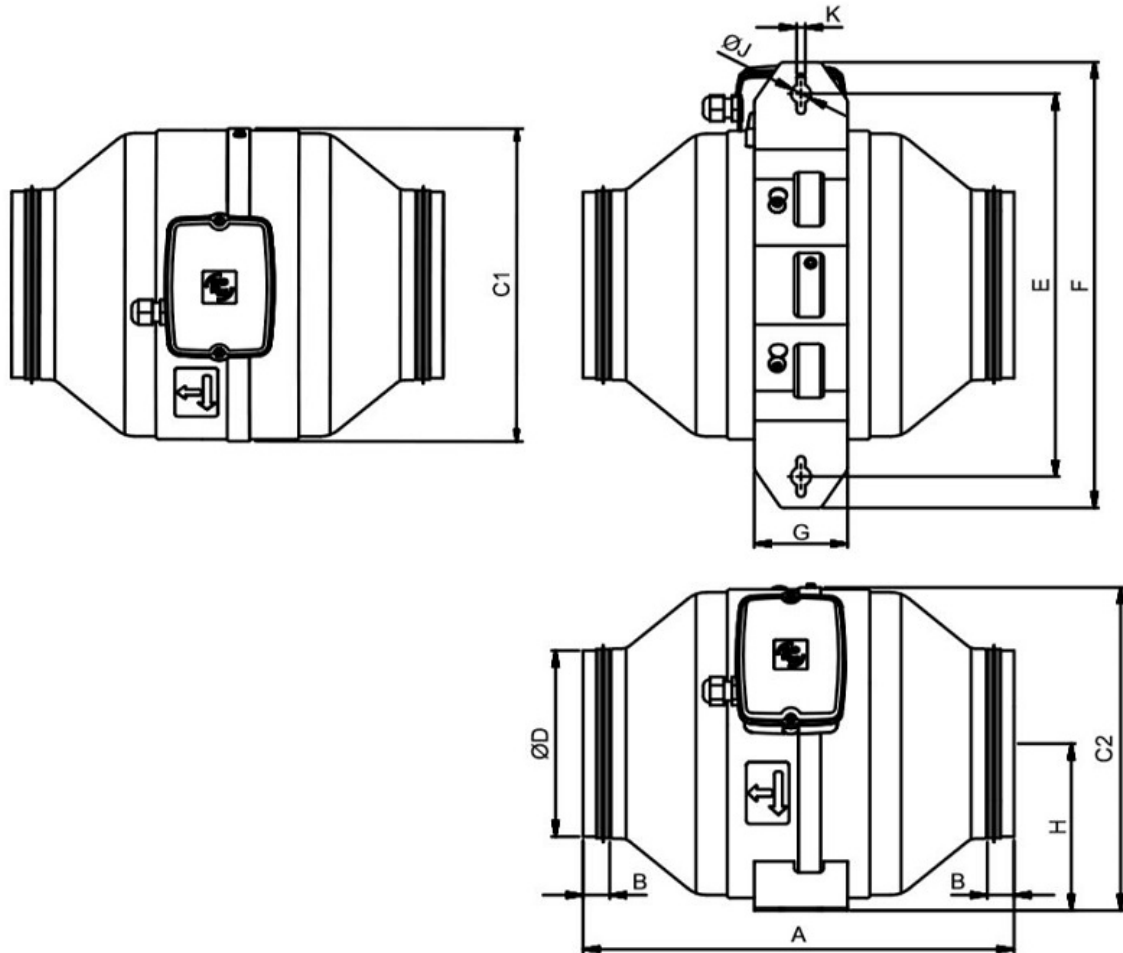




Performance Chart



Drawing



A	B	C1	C2	ØD	E	F	G	H	ØJ	K
276	15	181	190	95	256	306	70	98	15	6.5

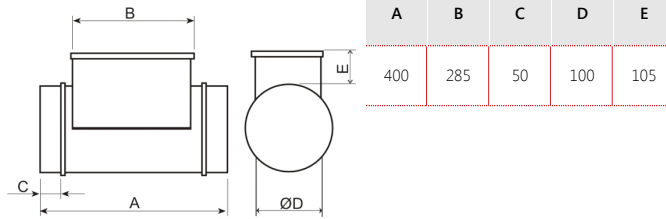
Accessories

5211800700 - MBE-100/04B



Electric Heater Battery

Dimensions

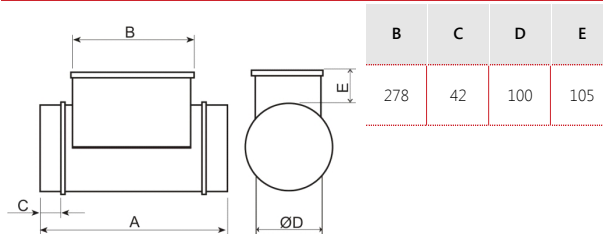


5211808300 - MBE-100/08B 1/230V



Electric Heater Battery

Dimensions

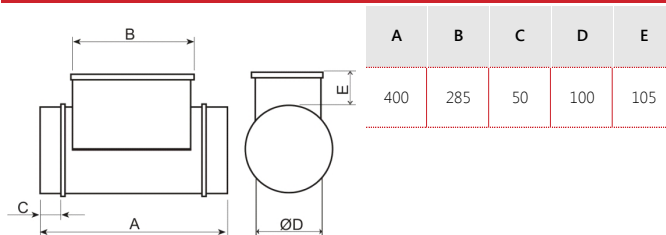


5211780000 - MBE-100/04B-R 1/230V



Electric Heater Battery

Dimensions

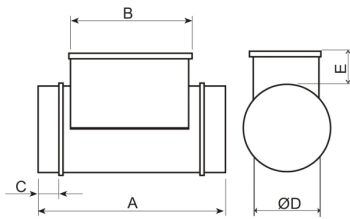


5211781000 - MBE-100/08B-R 1/230V



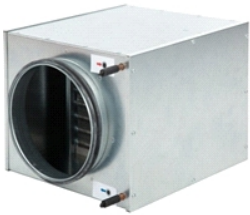
Electric Heater Battery

Dimensions



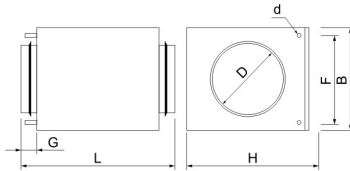
A	B	C	D	E
400	285	50	100	105

5132864000 - MBW-100



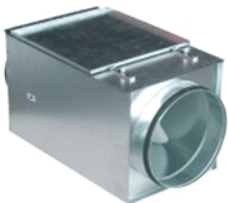
Hot-water coil

Dimensions



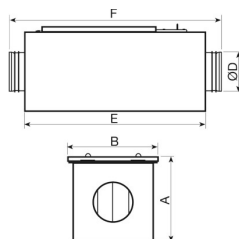
B	D	H	J	K	L	R
183	100	225	40	140	380	10

5416744600 - MFL-100 F



Box in galvanized steel for inserting the MFR F5, F6 and F7 filters. Fitted with inlet and discharge circular duct connection flanges with integrated rubber air seal and an inspection cover easy to open for maintaining the filters.

Dimensions



A	B	D	E	F
213	220	100	450	522



JETLINE

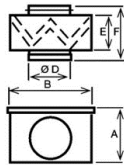
5145895600 - JETLINE-100 (220/240V50/60HZ) RE - IN LINE DUCT FANS

5416590700 - MFL-100 G4



IN-LINE FILTER BOX (G4 GRADE)

Dimensions



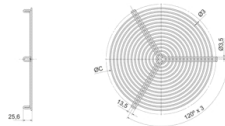
A	B	D	E	F
200	200	100	160	196

5145800800 - DEF-VENT-100



OUTLET WIRE PROTECTION GUARD

Dimensions



NW
100

5145819800 - ACOP-VENT-100 (V977501)



FLEXIBLE CONNECTOR



JETLINE

5145895600 - JETLINE-100 (220/240V50/60HZ) RE - IN LINE DUCT FANS

Sound Performance

	63	125	250	500	1k	2k	4k	8k	Overall
Inlet (LwA)	30	33	44	50	54	51	51	36	58
Inlet LpA @ 1m	19	22	33	39	43	40	40	25	47
Outlet (LwA)	27	32	45	49	50	49	46	34	55
Outlet LpA @ 1m	16	21	34	38	39	38	35	23	44
Breakout (LwA)	19	15	23	27	35	34	34	19	40
Breakout LpA @ 1m	8	4	12	16	24	23	23	8	29



Q=1



ErP Data

Ecodesign	
Commission regulation (EU) N°1253/2014 of July 2014	
Information requirements (Annex V)	
Product Name	JETLINE-100 (220/240V50/60HZ) RE
Identifier	5145895600
SEC average climate (kWh/(m2.an))	-13,91
SEC class	NA
SEC cold climate (kWh/(m2.an))	-30
SEC warm climate (kWh/(m2.an))	-5
Typology	RVU unidirectional
Type of drive	Variable speed drive
Type of HRC	None
Thermal efficiency (%)	0
Maximum flow rate (m3/h)	184
Electrical power input at maximum flow rate (W)	19,11
Sound power level (LWA)	28
Reference flow rate (m3/s)	0,0362
Reference pressure difference (Pa)	45,65
SPI (W/m3/h)	0,1036
Control factor	1
Control typology	Manual
Maximum internal leakage for BVU (%)	Not applicable
Maximum external leakage for BVU and UVU (%)	0,5
Mixing rate for BVU without duct connection (%)	Not applicable
Position of visual filter warning	Not applicable
description of visual filter warning	Not applicable
Instructions to install supply grilles	F&W Leaflet
Instructions to install exhaust grilles	F&W Leaflet
https://www.solerpalau.com/	
Airflow sensitivity to pressure variation	Not applicable
Indoor/outdoor air tightness (m3/h)	Not applicable
Annual electricity consumption - Average climate (kWh/a)	1,3
Annual electricity consumption - Warm climate (kWh/a)	1,3
Annual electricity consumption - Cold climate (kWh/a)	1,3
Annual heating saved - Average climate (kWh/a)	17,15
Annual heating saved - Warm climate (kWh/a)	7,76
Annual heating saved - Cold climate (kWh/a)	33,55