

Brushed Stainless Steel Ceiling Extract KCN

or Supply Valve

JUST FANS



Description

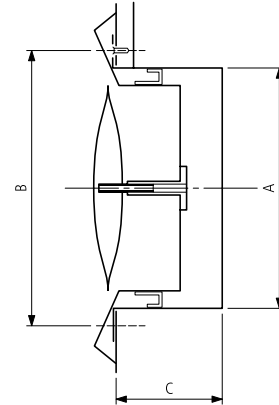
KCN Brushed Stainless Steel ceiling valves are designed for ventilation intake and exhaust. They provide smooth control with the ability to accurately adjust air flow.

These valves are manufactured from brushed stainless steel. are very attractive in appearance, durable and easy to install. Supplied with ceiling mounting flange which incorporate a circular spigot to connect direct to the duct system.

Material: steel sheet

Furnishing: brushed polished

Dimensions



$\varnothing d$ [mm]	A [mm]	B [mm]	C [mm]
100	97	118	52
125	120	141	52
150	145	162	62
200	195	208	70