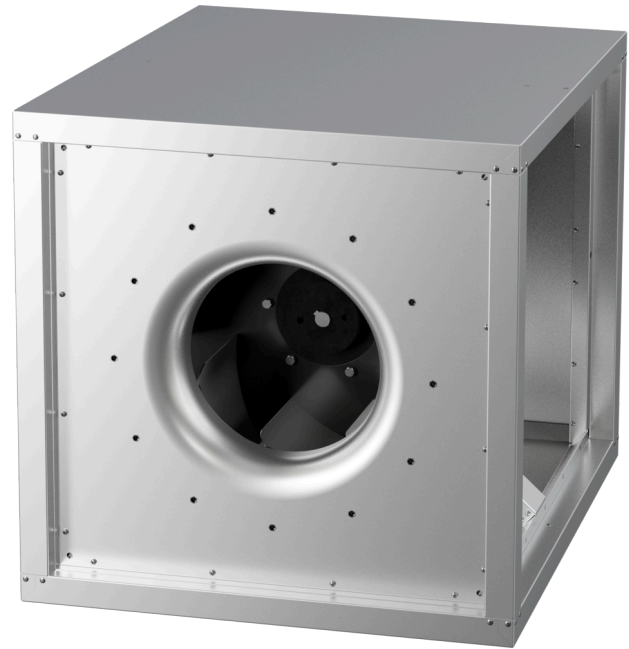


MPC 450 E4 20

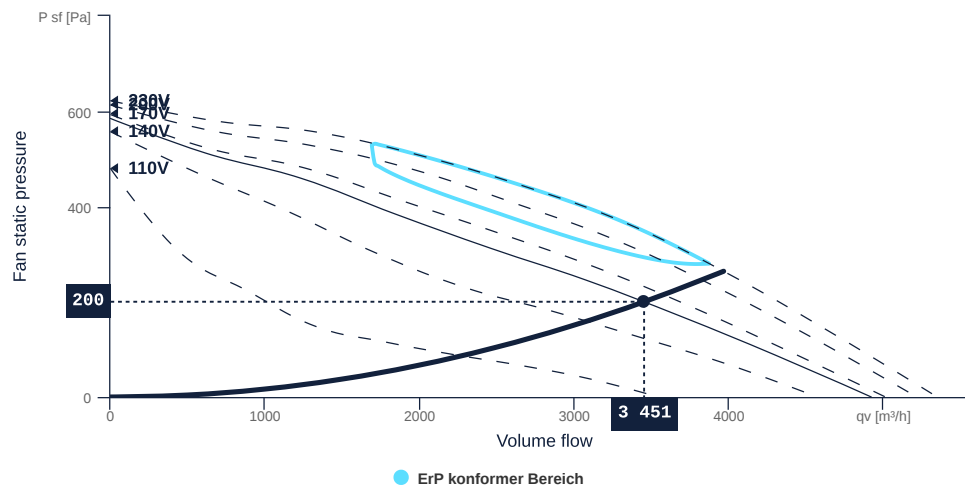
126637

- Radial fan with backward curved impeller
- Variable discharge direction right / left / linear
- Double wall housing made of galvanized steel sheet, insulated
- Robust single-phase AC motor, voltage controllable
- Integrated thermal switch
- With bottom tray



MAP

Name	Value	Unit
Volume flow	3451	m³/h
Pressure	200	Pa



to the product detail page

MPC 450 E4 20

126637

TECHNICAL SPECIFICATIONS

Name	Value	Unit	Formula symbol
Volume flow	3451	m³/h	QV _{calc}
Pressure	200	Pa	psf _{calc}
Fan pressure	227	Pa	pf
Fan static pressure	200	Pa	psf
Current consumption Motor	3	A	I _e
Electrical power consumption	625	W	P _{ek}
Voltage	160	V	U
Rotation speed	1180	1/min	N
Total static efficiency	30	%	etaFaPeK
Total efficiency	34	%	etatPeK
SFP (entire device)	652	W/(m³/s)	sfp _{device}
Sound power level inlet	76	dB(A)	LwA5
Sound power level outlet	79	dB(A)	LwA6
Sound power level housing radiation	57	dB(A)	LwA2

SOUND DATA

Sound power	mid-frequency tape										Unit	Formula symbol
	Σ	63	125	250	500	1000	2000	4000	8000	16000		
suction	76	48	64	68	71	69	68	67	61	34	dB(A)	LwA5
blowout	79	53	67	70	75	74	70	67	60	34	dB(A)	LwA6
Casing break out	57	46	53	51	49	43	43	39	33	4	dB(A)	LwA2

SOUND PRESSURE LEVEL CALCULATOR

Name	Value	Unit
Enveloping surface	Halphsphere	
Distance	3	m

Sound pressure	NR	mid-frequency tape										Unit	Formula symbol
		Σ	63	125	250	500	1000	2000	4000	8000	16000		
suction	53	59	30	46	50	53	51	51	50	44	16	dB(A)	LwA5
blowout	56	62	36	49	52	57	56	52	49	43	16	dB(A)	LwA6
Casing break out	34	40	29	36	33	31	26	26	21	16	0	dB(A)	LwA2



to the product detail page

MPC 450 E4 20

126637

ruck

GENERAL DATA

Name	Value	Unit	Formula symbol
Labeling	none		
Duct size	-		WxH _{duct}
Pipe connection size (DN)	DN500		DN
Rated voltage (entire device)	230	V	U _{rated}
Phases (entire device)	1~		phase
Electrical protection (entire device)	6 A		fuse
Housing material	Galvanized steel		mat _{casing}
Impeller material	Steel		mat _{impeller}
Weight	72	kg	m
Nominal air flow rate, nominal point m ³ /h	3549.6	m ³ /h	q _{v,nom}
Nominal external pressure, static	332	Pa	p _{s,nom}
Fan type	Radial		Fan _{type}
Category / Installation situation	A		cat

ERP DATA (LOT 6)

Name	Value	Unit	Formula symbol
Nominal air flow rate, nominal point m ³ /s	0.99	m ³ /s	q _{v,nom}
Actual electrical input power, nominal point	0.76	kW	P _{e,nom}
Face velocity, nominal point	7	m/s	v _{nom}
Nominal external pressure, static	332	Pa	p _{s,nom}
supply air fan static efficiency, nominal point	52.5	%	η _{es,SUP}
Highest external air leakage rate	0.01	%	
Enclosure sound level, nominal point	64	dB(A)	L _{WA2}
Rating	Product is compliant 2018		

MAXIMAL DATA

Name	Value	Unit	Formula symbol
Max. power consumption (device)	767	W	P _{ed, max}
Max. operating current (device)	4.44	A	I _{ed, max}
Max. speed	1450	1/min	n _{max}
Max. stat. efficiency	41.7	%	η _{es}
Max. fan efficiency	44.1	%	η _e
Max. flowrate	5347	m ³ /h	q _{v, max}
Max. stat pressure	620	Pa	p _{sf, max}
Max. medium temperature	75	°C	T _{m, max}
Max. environment temperature	75	°C	T _{amb, max}
Min. environment temperature	-25	°C	T _{amb, min}
Min. voltage	110	V	U _{min}



to the product detail page


MPC 450 E4 20


126637


MOTOR DATA


Name	Value		Unit	Formula symbol
	50 Hz	60 Hz		
Rated frequency (device)		50		f
Motor type		AC 1~		phase
Control type		stepless-controlled		ctrltype
Installation type		IRM (In)		install
Rotation direction		right		rotation
Isolation class		ISO F		ISOclass
Protection class		IP54		IPmotor
Is pole-changeable		No		polexch
Type of power supply		AC 1~		pwrSUPmotor
Capacity capacitor		16	µF	Ccond
Voltage capacitor		400	V	VUcond
Rated voltage	230		V	U _{rated, f1}
Rated current	3.3		A	I _{rated, f1}
Shaft power	550		W	P _{out, f1}
Speed	1350		1/min	n _{f1}
Min. temperature	-25		°C	T _{motor, min}
Cos Phi	0.980000	0.000000		cos φ
UL-Certification motor		None		ULcert


CIRCUIT DIAGRAMS / DIMENSIONAL DRAWINGS













to the product detail page

MPC 450 E4 20

126637

MECHANICAL ACCESSORIES

FB 700 | 160866



- Air filter box for panel filter
- For MPC box 700
- For 1 or 2 filter (not included)
- Housing made of galvanized sheet steel

USM 700 400 | 107214



- Transition spigot
- Galvanized steel sheet
- Insulated

USM 700 450 | 107240



- Transition spigot
- Galvanized steel sheet
- Insulated

USM 700 500 | 107241



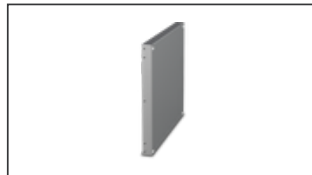
- Transition spigot
- Galvanized steel sheet
- Insulated

GR MPC 02 | 123432



- Base frame für MPC
- Galvanized steel sheet

UCP 700 | 142568



- Closed panel
- Galvanized steel sheet

UQR 700 400 01 | 139863



- Transition duct/tube
- Galvanized steel sheet
- Incl. 4 cylinder cap screws (M8 x 16 mm), 4 serrated lock washers for nominal size M8

UQR 700 450 01 | 139868



- Transition duct/tube
- Galvanized steel sheet
- Incl. 4 cylinder cap screws (M8 x 16 mm), 4 serrated lock washers for nominal size M8

UQR 700 500 01 | 139871



- Transition duct/tube
- Galvanized steel sheet
- Incl. 4 cylinder cap screws (M8 x 16 mm), 4 serrated lock washers for nominal size M8

VM 400 | 102654



- Fast clamps for sound decoupling and sealing
- Galvanized steel sheet, 5 mm
- Neopren gasket
- 1 Pack = 2 pieces

VM 500 | 118094



- Fast clamps for sound decoupling and sealing
- Galvanized steel sheet, 5 mm
- Neopren gasket
- 1 Pack = 2 pieces

VM 450 | 119495



- Fast clamps for sound decoupling and sealing
- Galvanized steel sheet, 5 mm
- Neopren gasket
- 1 Pack = 2 pieces

AS MPC 400 | 140847



- Inlet spigot
- Galvanized steel sheet

AS MPC 450 | 140852



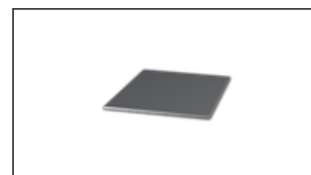
- Inlet spigot
- Galvanized steel sheet

AS MPC 500 | 140871



- Inlet spigot
- Galvanized steel sheet

RD MPC 700 | 140093



- Rain cover for outdoor installation
- Galvanized steel sheet

WSH MPC 02 | 123433

WSG MPC 700 | 140748



to the product detail page

MPC 450 E4 20

126637



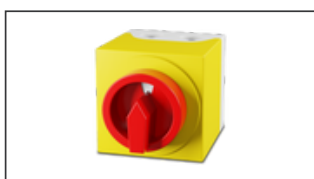
- Weather protection hood
- Galvanized steel sheet



- Weather protection grille
- Galvanized steel sheet

ELECTRICAL ACCESSORIES

GS 01 | 102787



- Isolator switch
- U_{max} = 400 V, 50/60 Hz
- Switching capacity 400 V 3~ = 5,5 kW
- I_{max} = 16 A

TEM 050 | 103519



- 5-step transformer
- 230 V, 50/60 Hz, 5 A
- Output voltage: 230-190-170-140-110-80-0 V
- Protection class IP 54

TEM 050G | 109966



- 5-step transformer
- 230 V ~, 50/60 Hz

TES 050 02 | 146196



- 5-step transformer
- 230 V, 50/60 Hz, 5 A
- Without housing, control cabinet installation
- Protection class IP 20

