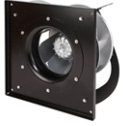




PFB/PFT-EC

5730004500 - PFT/3-355/100D 5-2900 A E00 400V C V5



Direct driven single inlet radial fan with aluminum high performance impeller size 355/100 and IP54 EC external rotor motor running at 3-400V-50Hz in plug fan construction including inlet ring and motor support for ease of installation and maximum performance.

Nominal speed 2900 rpm.

Control type: constant speed.

Control input 0-10 V / 4-20 mA / PWM and RS-485 ModBus-RTU.

Theoretical Working Point

Airflow	-
Static Pressure	0,000 Pa
Temperature	20 °C
Altitude	0 m
Density	1,2 kg/m ³
Frequency	50/60 Hz

Construction

Fan size	355/100
Minimum temperature	-20°C
Maximum temperature	40°C
Weight	20,00 kg

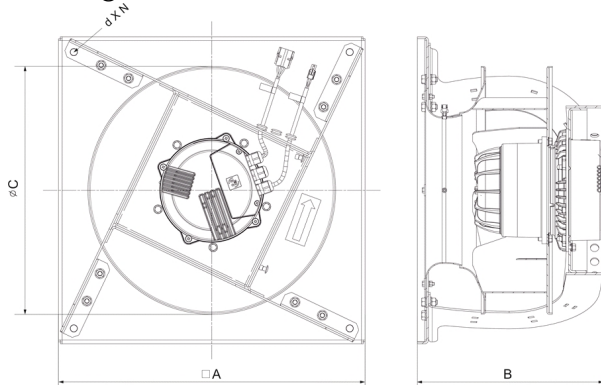
Motor Characteristics

Number of poles	-
Maximum Input power	2,48 kW
Maximum absorbed current	3,7 A
Voltage	3-400V-50Hz
IP Rating	IP54
Motor insulation class	B

Working Point

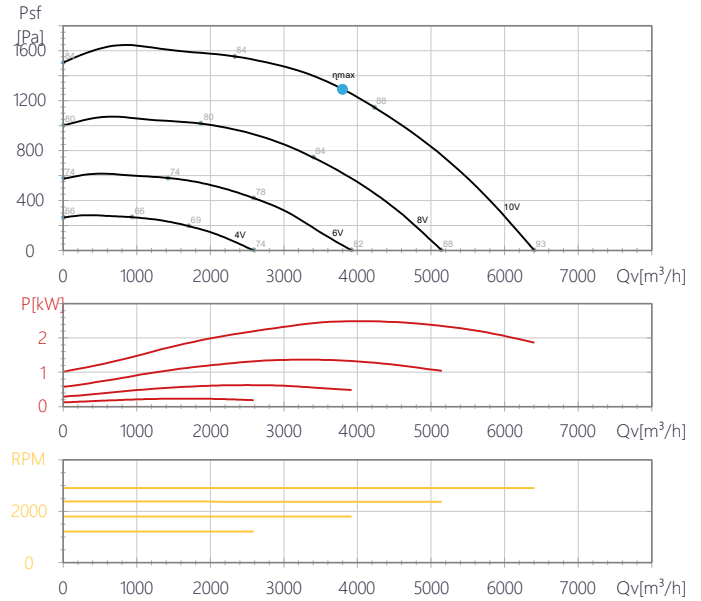
Airflow	-
Static Pressure	-
Dynamic pressure	-
Total Pressure	-
Input power	-
Fan speed	2900
Specific Fan Power	-

Drawing



A	B	C	D	N
500	450	316.8	11	4

Performance Chart





PFB/PFT-EC

5730004500 - PFT/3-355/100D 5-2900 A E00 400V C V5

Sound Performance

	63	125	250	500	1k	2k	4k	8k	Overall
Inlet (LwA)	56	69	80	87	86	83	84	86	93
Inlet LpA @ 1m	45	58	69	76	75	72	73	75	82
Outlet (LwA)	60	72	87	92	95	91	88	89	99
Outlet LpA @ 1m	49	61	76	81	84	80	77	78	88





PFB/PFT-EC

5730004500 - PFT/3-355/100D 5-2900 A E00 400V C V5



ErP Data

Fan type	
Maximum efficiency η [%]	54,8
Installation type	A
Category efficiency	Static
N	N64,4
Variable speed drive	+
Year of manufacture	Product Rating Plate
Input power at optimum efficiency point (kW)	2,485
Airflow at optimum efficiency point [m ³ /h]	3.810
Pressure at optimum efficiency point [Pa]	1.287
Correction factor	No
Element supplied with the fan	Instruction manual
Speed at optimum efficiency point	2906
Specific Ratio	3
Manufacturer's Info	S&P
Product code	5730004500
Recycling/disposal	Instruction Manual
Maintenance	Instruction Manual
Additional components	Catalogue and according to ISO 5801

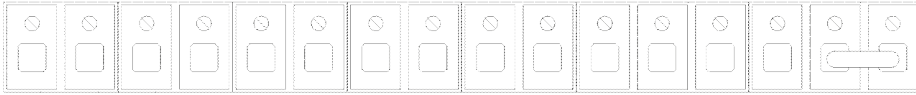


PFB/PFT-EC

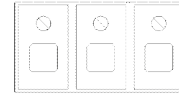
5730004500 - PFT/3-355/100D 5-2900 A E00 400V C V5

Media

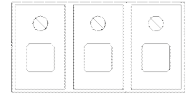
10V IN1 FG GND D1 D0 D1 D0 GND GND OUT 24V IN2 GND EN 24V



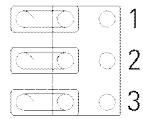
NO COM NC



L1 L2 L3



J5



J6

