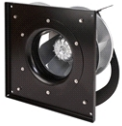




# PFB/PFT-EC

5730004600 - PFT/3-400/112D 5-2250 A E00 400V C V5



Direct driven single inlet radial fan with aluminum high performance impeller size 400/112 and IP54 EC external rotor motor running at 3-400V-50Hz in plug fan construction including inlet ring and motor support for ease of installation and maximum performance.

Nominal speed 2250 rpm.

Control type: constant speed.

Control input 0-10 V / 4-20 mA / PWM and RS-485 ModBus-RTU.

## Theoretical Working Point

Airflow	-
Static Pressure	0,000 Pa
Temperature	20 °C
Altitude	0 m
Density	1,2 kg/m <sup>3</sup>
Frequency	50/60 Hz

## Construction

Fan size	400/112
Minimum temperature	-20°C
Maximum temperature	40°C
Weight	20,25 kg

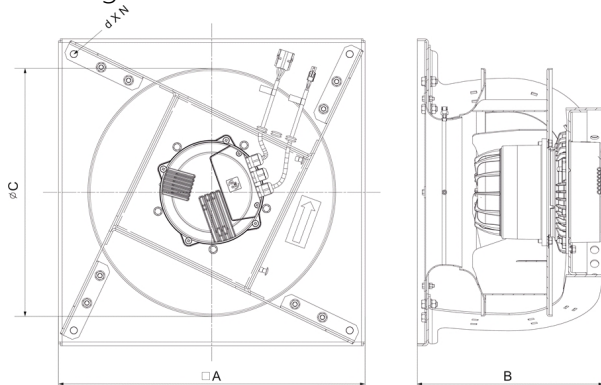
## Motor Characteristics

Number of poles	-
Maximum Input power	2,16 kW
Maximum absorbed current	3,2 A
Voltage	3-400V-50Hz
IP Rating	IP54
Motor insulation class	B

## Working Point

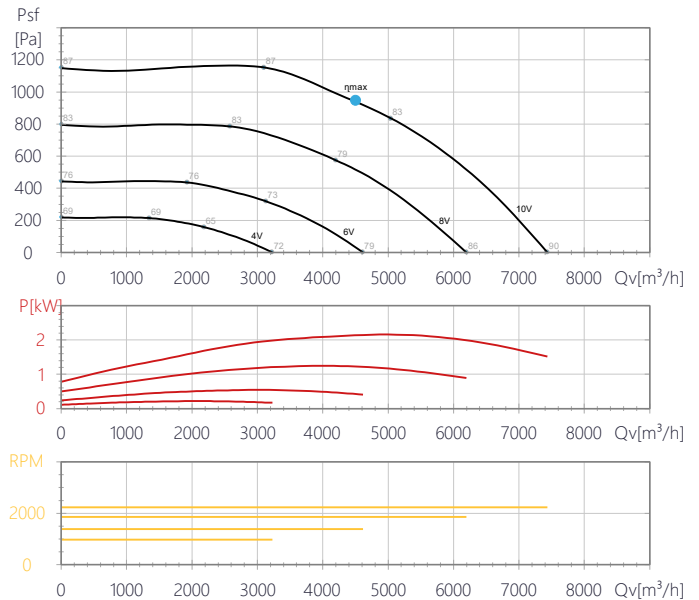
Airflow	-
Static Pressure	-
Dynamic pressure	-
Total Pressure	-
Input power	-
Fan speed	2250
Specific Fan Power	-

## Drawing



A	B	C	D	N
500	450	340	11	4

## Performance Chart





# PFB/PFT-EC

5730004600 - PFT/3-400/112D 5-2250 A E00 400V C V5

## Sound Performance

	63	125	250	500	1k	2k	4k	8k	Overall
<b>Inlet (LwA)</b>	52	66	81	86	82	81	78	76	90
<b>Inlet LpA @ 1m</b>	41	55	70	75	71	70	67	65	79
<b>Outlet (LwA)</b>	55	69	86	90	93	90	85	81	97
<b>Outlet LpA @ 1m</b>	44	58	75	79	82	79	74	70	86





# PFB/PFT-EC

5730004600 - PFT/3-400/112D 5-2250 A E00 400V C V5



## ErP Data

Fan type	
Maximum efficiency $\eta$ [%]	55,0
Installation type	A
Category efficiency	Static
N	N65,6
Variable speed drive	+
Year of manufacture	Product Rating Plate
Input power at optimum efficiency point (kW)	2,145
Airflow at optimum efficiency point [m <sup>3</sup> /h]	4.502
Pressure at optimum efficiency point [Pa]	943
Correction factor	No
Element supplied with the fan	Instruction manual
Speed at optimum efficiency point	2237
Specific Ratio	2
Manufacturer's Info	S&P
Product code	5730004600
Recycling/disposal	Instruction Manual
Maintenance	Instruction Manual
Additional components	Catalogue and according to ISO 5801



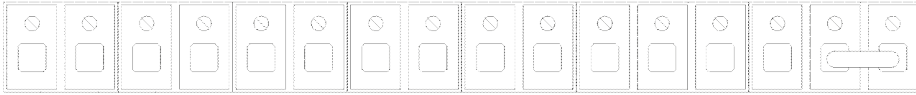
# PFB/PFT-EC

5730004600 - PFT/3-400/112D 5-2250 A E00 400V C V5

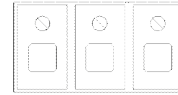


## Media

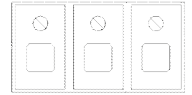
10V IN1 FG GND D1 D0 D1 D0 GND GND OUT 24V IN2 GND EN 24V



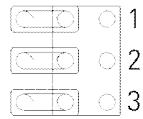
NO COM NC



L1 L2 L3



J5



J6

