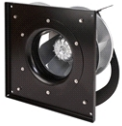




PFB/PFT-EC

5730004700 - PFT/3-450/125D 6-1600 A E00 400V C V5



Direct driven single inlet radial fan with aluminum high performance impeller size 450/125 and IP54 EC external rotor motor running at 3-400V-50Hz in plug fan construction including inlet ring and motor support for ease of installation and maximum performance.
 Nominal speed 1600 rpm.
 Control type: constant speed.
 Control input 0-10 V / 4-20 mA / PWM and RS-485 ModBus-RTU.

Theoretical Working Point

Airflow	-
Static Pressure	0,000 Pa
Temperature	20 °C
Altitude	0 m
Density	1,2 kg/m ³
Frequency	50/60 Hz

Construction

Fan size	450/125
Minimum temperature	-20°C
Maximum temperature	40°C
Weight	26,27 kg

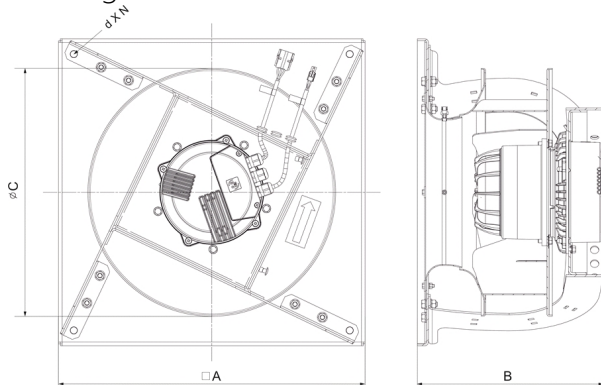
Motor Characteristics

Number of poles	-
Maximum Input power	1,37 kW
Maximum absorbed current	2,2 A
Voltage	3-400V-50Hz
IP Rating	IP54
Motor insulation class	B

Working Point

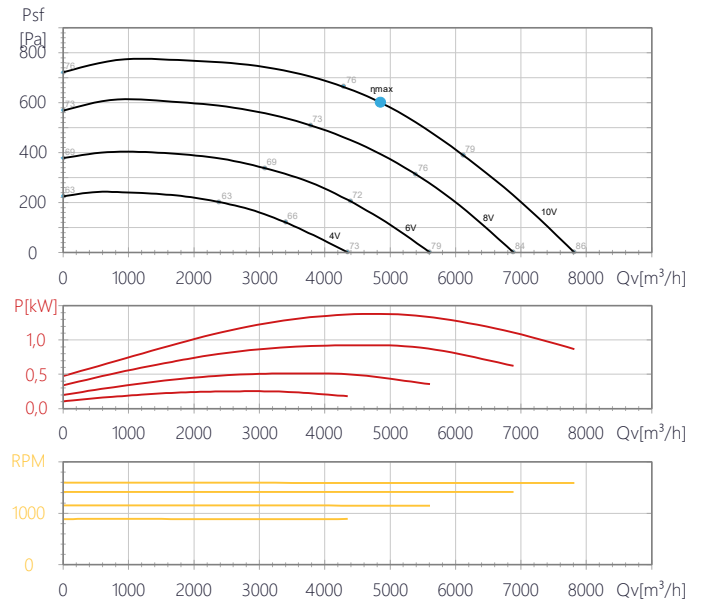
Airflow	-
Static Pressure	-
Dynamic pressure	-
Total Pressure	-
Input power	-
Fan speed	1600
Specific Fan Power	-

Drawing



A	B	C	D	N
630	580	364	11	8

Performance Chart





PFB/PFT-EC

5730004700 - PFT/3-450/125D 6-1600 A E00 400V C V5

Sound Performance

	63	125	250	500	1k	2k	4k	8k	Overall
Inlet (LwA)	49	61	74	80	77	79	81	73	86
Inlet LpA @ 1m	38	50	63	69	66	68	70	62	75
Outlet (LwA)	54	74	81	85	87	85	79	67	91
Outlet LpA @ 1m	43	63	70	74	76	74	68	56	80





PFB/PFT-EC

5730004700 - PFT/3-450/125D 6-1600 A E00 400V C V5



ErP Data

Fan type	
Maximum efficiency η [%]	58,6
Installation type	A
Category efficiency	Static
N	N72,2
Variable speed drive	+
Year of manufacture	Product Rating Plate
Input power at optimum efficiency point (kW)	1,380
Airflow at optimum efficiency point [m ³ /h]	4,864
Pressure at optimum efficiency point [Pa]	598
Correction factor	No
Element supplied with the fan	Instruction manual
Speed at optimum efficiency point	1592
Specific Ratio	2
Manufacturer's Info	S&P
Product code	5730004700
Recycling/disposal	Instruction Manual
Maintenance	Instruction Manual
Additional components	Catalogue and according to ISO 5801

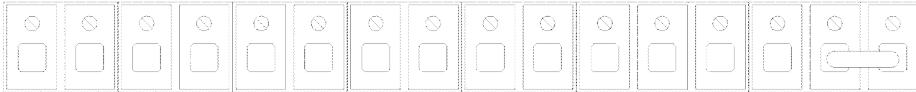


PFB/PFT-EC

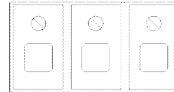
5730004700 - PFT/3-450/125D 6-1600 A E00 400V C V5

Media

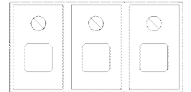
10V IN1 FG GND D1 D0 D1 D0 GND GND OUT 24V IN2 GND EN 24V



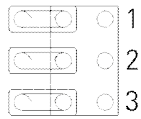
NO COM NC



L1 L2 L3



J5



J6

