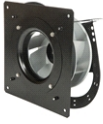




PFB/PFT-EC

5730005100 - PFT/3-560/160D 7-1385 A E00 400V C V5



Direct driven single inlet radial fan with aluminum high performance impeller size 560/160 and IP54 EC external rotor motor running at 3-400V-50Hz in plug fan construction including inlet ring and motor support for ease of installation and maximum performance.

Nominal speed 1385 rpm.

Control type: constant speed.

Control input 0-10 V / 4-20 mA / PWM and RS-485 ModBus-RTU.

Theoretical Working Point

Airflow	-
Static Pressure	0,000 Pa
Temperature	20 °C
Altitude	0 m
Density	1,2 kg/m ³
Frequency	50/60 Hz

Construction

Fan size	560/160
Minimum temperature	-20°C
Maximum temperature	40°C
Weight	27,45 kg

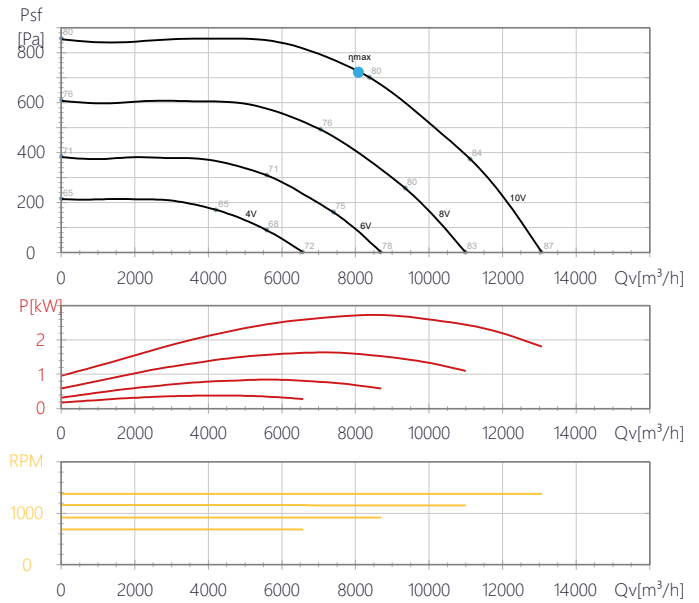
Motor Characteristics

Number of poles	-
Maximum Input power	2,73 kW
Maximum absorbed current	3,9 A
Voltage	3-400V-50Hz
IP Rating	IP54
Motor insulation class	B

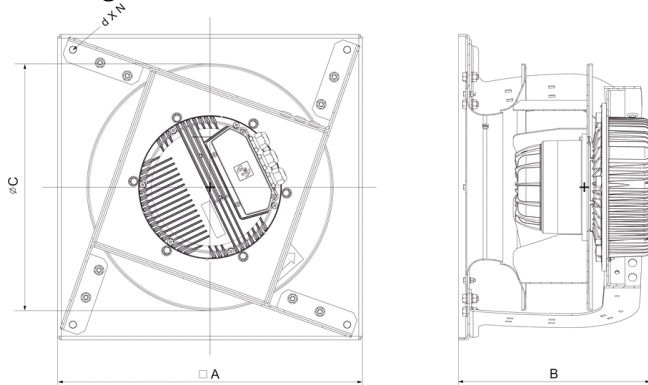
Working Point

Airflow	-
Static Pressure	-
Dynamic pressure	-
Total Pressure	-
Input power	-
Fan speed	1385
Specific Fan Power	-

Performance Chart



Drawing



?A	B	ØC	Ød	N
387	456	636	14	8



PFB/PFT-EC

5730005100 - PFT/3-560/160D 7-1385 A E00 400V C V5

Sound Performance

	63	125	250	500	1k	2k	4k	8k	Overall
Inlet (LwA)	53	73	80	81	80	79	76	71	87
Inlet LpA @ 1m	42	62	69	70	69	68	65	60	76





PFB/PFT-EC

5730005100 - PFT/3-560/160D 7-1385 A E00 400V C V5

ErP Data

Fan type	
Maximum efficiency η [%]	59,7
Installation type	A
Category efficiency	Static
N	N69,1
Variable speed drive	+
Year of manufacture	Product Rating Plate
Input power at optimum efficiency point (kW)	2,714
Airflow at optimum efficiency point [m ³ /h]	8.104
Pressure at optimum efficiency point [Pa]	720
Correction factor	No
Element supplied with the fan	Instruction manual
Speed at optimum efficiency point	1378
Specific Ratio	2
Manufacturer's Info	S&P
Product code	5730005100
Recycling/disposal	Instruction Manual
Maintenance	Instruction Manual
Additional components	Catalogue and according to ISO 5801

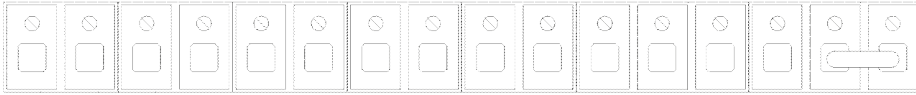


PFB/PFT-EC

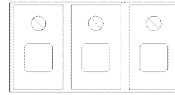
5730005100 - PFT/3-560/160D 7-1385 A E00 400V C V5

Media

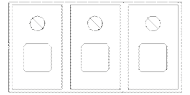
10V IN1 FG GND D1 D0 D1 D0 GND GND OUT 24V IN2 GND EN 24V



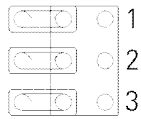
NO COM NC



L1 L2 L3



J5



J6

