

KBR 355D2 Thermo Fan

Centrifugal box fan, 120°C continuous, insulated

Item number: 87918

Variant: 400V 3~ 50Hz

Max temperature of transported air 120°C

Speed-controllable via frequency converter

Integral cold conductor (PTC)

Low sound level

Standard motor outside the air stream

Easy to maintain and reliable

The KBR fans have impellers manufactured from galvanised steel with backward-curved blades and external rotor motors. The KBR casing is manufactured from doubleskinned galvanised sheet steel and is insulated with 50 mm mineral wool.

The KBR fans have a swing-out door for easy inspection and service. The direction of the door opening can easily be changed from left to right at site. The fan is isolated from the casing via connectors and anti-vibration dampers are incorporated into the base frame. To protect the motors from overheating the KBR fans have Integral cold conductor (PTC)

with external leads for connection to a motor protection device.

Please note: Speed control by voltage, i.e. voltage transformers, is not possible!

In accordance with Commission Regulation (EC) no 640/2009 of the European Parliament - eco-design requirements for electric motors - the new international efficiency classes are binding as of 16 June 2011. These guidelines defined by CEMEP and EPACT are regarded as international standard for energy-saving high-efficiency motors for frequencies of 50 or 60 Hz and make the use of IE2 motors mandatory.

With this new and more efficient technology we offer our customers many advantages such as environmentally friendly operation, reduced energy consumption and hence lower emissions.



Technical parameters

Nominal data		
Voltage (nominal)	400	V
Frequency	50	Hz
Phase(s)	3~	
Input power	3,556	W
Input current	5.67	A
Impeller speed	2,887	r.p.m.
Air flow	max ; 7,286;	m³/h
Temperature of transported air	max 120	°C
Max temperature of transported air, when speed controlled	120	°C
Sound data		
Sound pressure level at 10m (free field)	45	dB(A)
Sound pressure level at 4m (free field)	53	dB(A)
Protection/Classification		
Enclosure class, motor	IP55	
Insulation class	F	

Dimensions and weights

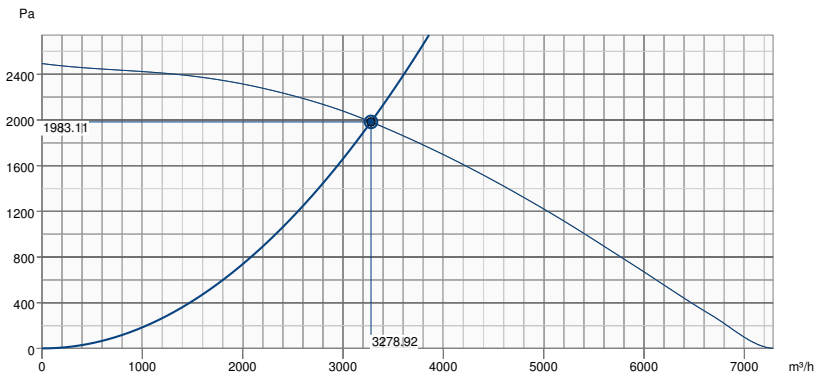
Weight	80.6 kg
--------	---------

Others

Motor type	AC
------------	----

Performance

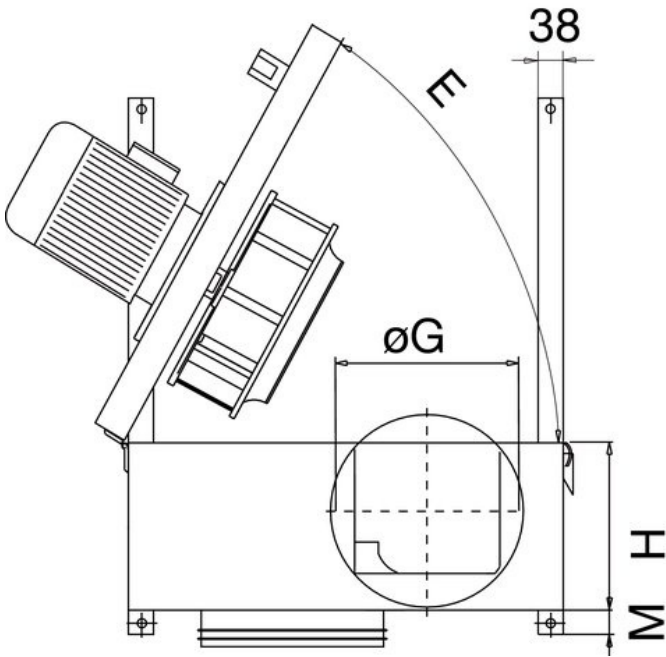
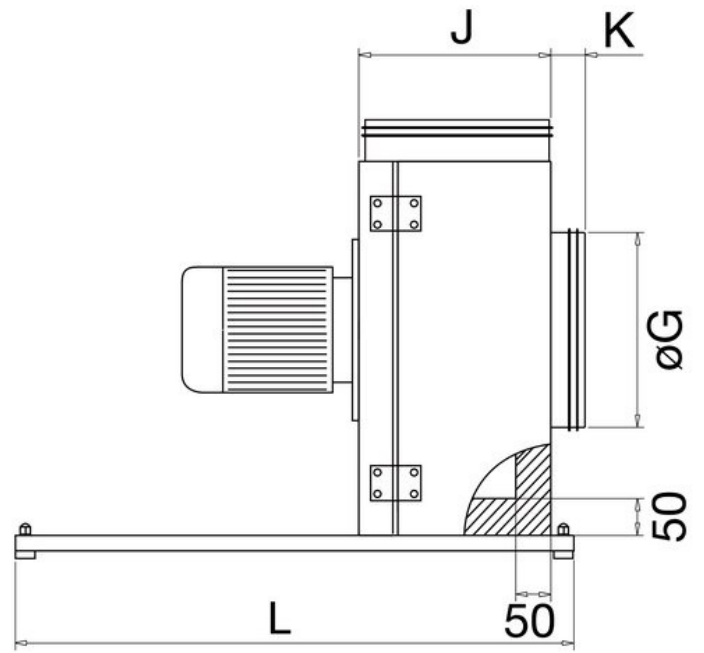
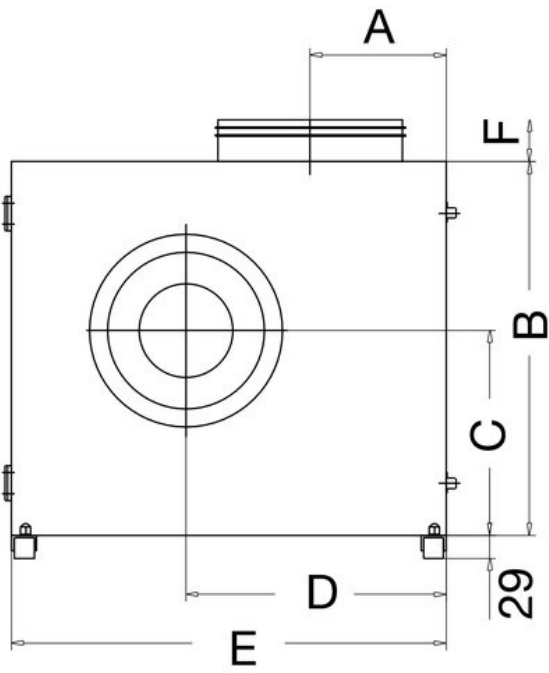
Performance curve



Hydraulic data	
Required air flow	3279 m³/h
Required static pressure	1983 Pa
Working air flow	3279 m³/h
Working static pressure	1983 Pa
Air density	1.204 kg/m³
Power	3238.3 W
Fan control - RPM	2900 rpm
Current	5.23 A
SFP	3.555 kW/m³/s
Control voltage	400.0 V
Supply voltage	400 V

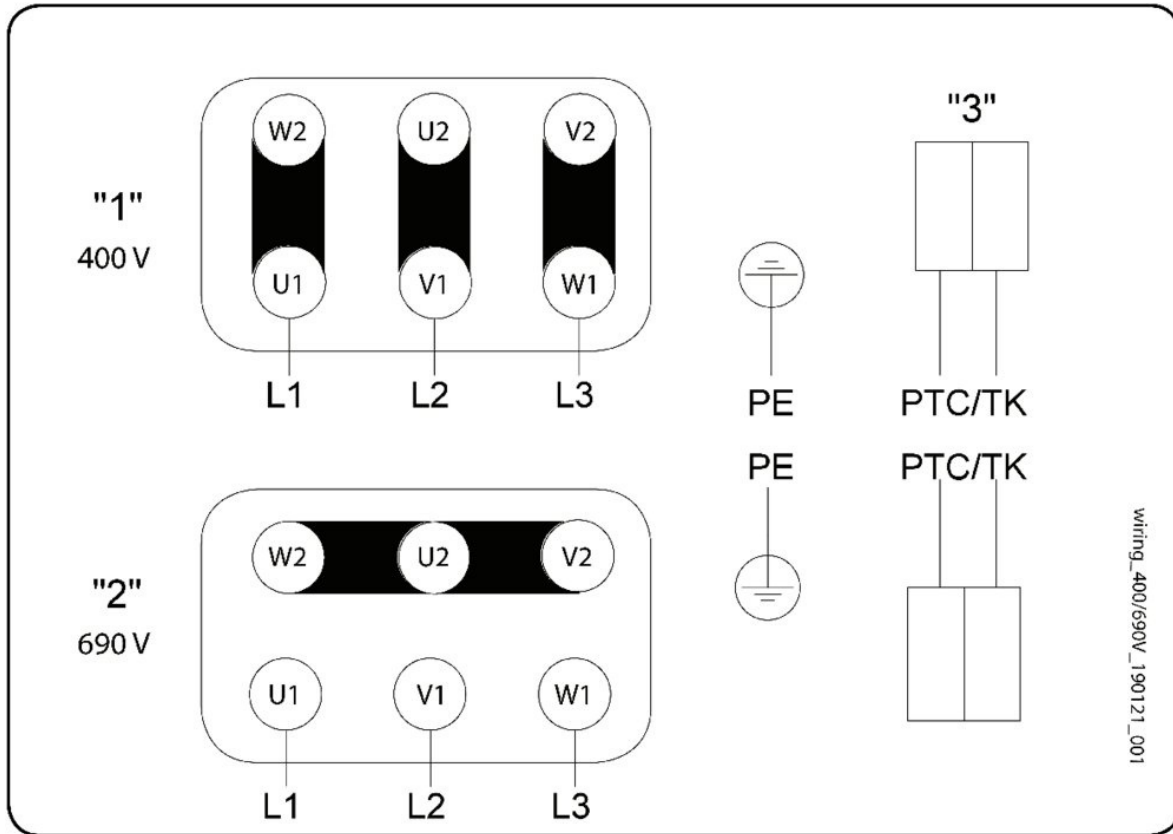
Sound power level		63	125	250	500	1k	2k	4k	8k	Total
Inlet	dB(A)	51	69	75	89	81	76	68	58	90
Outlet	dB(A)	53	71	76	90	82	77	69	59	91

Dimension



KBR	A	B	C	D	E	F	øG	H	J	K	L	M
355	206,7	655	372	451	770	125	355	273	331	70	770	55

Wiring



wiring_400/690V_190121_001

Three phase motor with cold conductor

"1" Delta connection

"2" Star connection

"3" Thermal motor protection optional

Changing of direction of rotation by interchanging of two phases

Accessories

- ASF 355/KB Flex. connection (2719)
- FRQ5-10A+LED V2 (36230)
- REV-5POL/05 ON/OFF (33979)
- U-EK230E Motor protection (30199)
- FRQS-10A V2 (36232)
- ALS-KBR drain plug (2727)
- FRQ-10A V2 (36228)
- FRQ5S-10A+LED V2 (36234)
- REV-9POL/12 ON/OFF (33981)
- WSD KBR-2 Weather roof f.motor (2729)
- REV-5POL/05 incl. EMC KIT (34549)
- WBK 315/355 Wall bracket (2721)

Documents

- MANUAL_Theribox KBR_EN_[004].PDF
- EU DECLARATION OF CONFORMITY_THERMOFANS_EN_[003].PDF

Specification