

KD 250 L1 Circ.duct fan

Item Number: 25334

Variant: 230V 1~ 50Hz

- High efficiency – low noise
- Speed-controllable
- Integral thermal contacts
- Can be installed in any position
- Maintenance-free and reliable

The KD series have external rotor motors with a new type of mixed flow impeller which reduces the external dimensions of the fans. These fans have a high capacity in relation to their compact design. Brackets are supplied with the fans to make installation easier.

The FK mounting clamp facilitates easy installation and removal and prevents the transfer of vibrations to the duct. To protect the motor from overheating the fan has integral thermal contacts with manual reset. The casing is manufactured from galvanised sheet steel.



Technical parameters

Norminal data		
Voltage (Nominal)	230	V
Frequency	50	Hz
Phase(s)	1~	
Input power	369	W
Input current	1.6	A
Impeller speed	2,604	r.p.m.
Air flow	max 0.552	m ³ /s
Capacitance of capacitor	10	µF
Temperature of transported air	max 70	°C
Max temperature of transported air, when speed controlled	70	°C
Sound data		
Sound pressure level at 3m (20m ² Sabin)	54	dB(A)

Protection/Classification

Enclosure class, motor	IP44
Insulation class	F

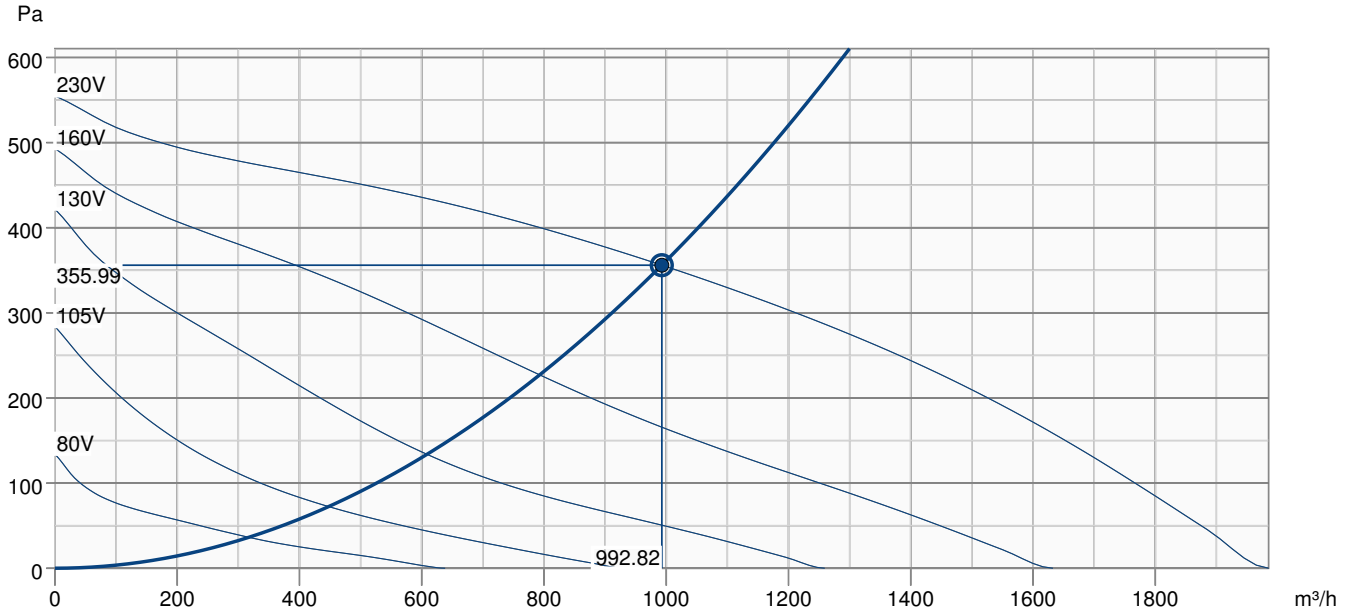
Dimensions and weights

Duct dimension; Circular, inlet	250	mm
Duct dimension; Circular, outlet	250	mm
Weight	9.4	kg

Others

Duct connection type	Circular
Motor type	AC

Performance curve

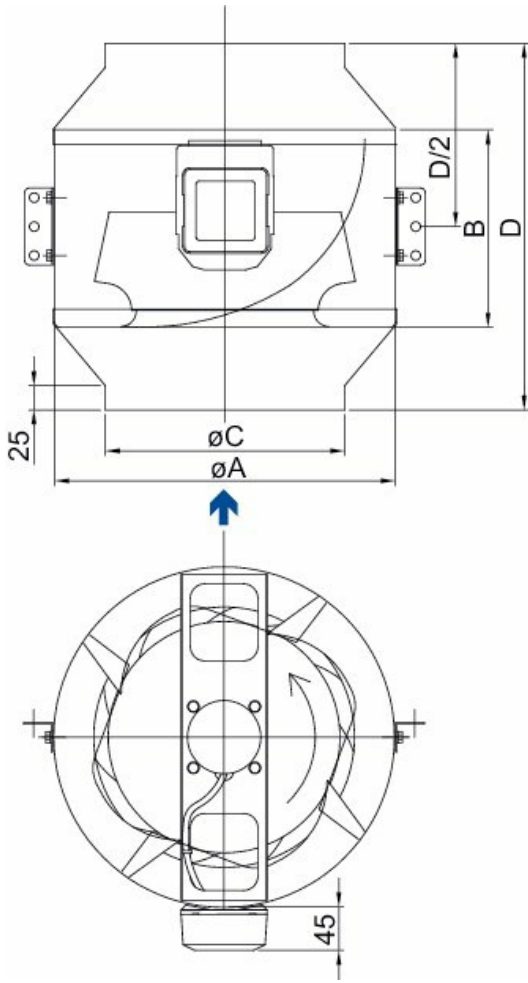


Hydraulic data

Required air flow	992.70 m³/h
Required static pressure	356 Pa
Working air flow	992.82 m³/h
Working static pressure	356 Pa
Air density	1.204 kg/m³
Power	347.5 W
Fan control - RPM	2637 rpm
Current	1.51 A
SFP	1.260 kW/m³/s
Control voltage	230.0 V
Supply voltage	230 V

Sound power level		63	125	250	500	1k	2k	4k	8k	Total
Inlet	dB(A)	55	73	74	78	75	71	71	64	82
Outlet	dB(A)	58	70	71	76	74	76	71	64	82
Surrounding	dB(A)	28	38	45	61	50	48	50	37	62
Sound pressure level at 3m (20m² Sabine)	dB(A)	-	-	-	-	-	-	-	-	55
Sound pressure level at 3m free field	dB(A)	-	-	-	-	-	-	-	-	41

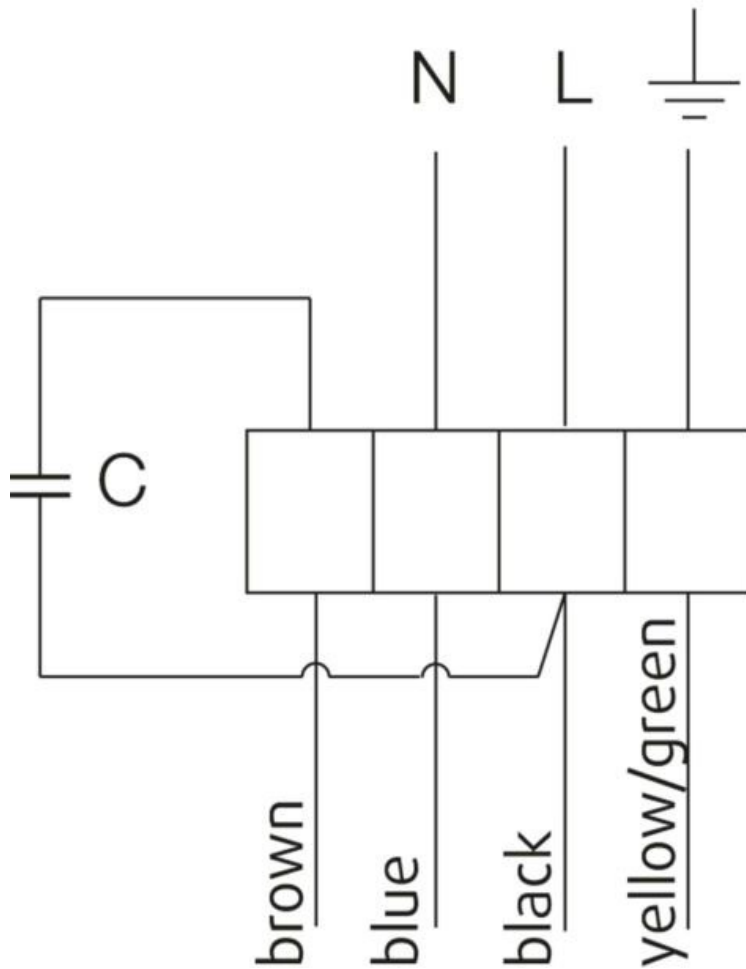
Dimension



øA	B	øC	D	D/2
313	180	248	310	155

Wiring

230V 1~



U1 = blue = blau

U2 = black = schwarz

Z = brown = braun

PE = yellow/green = grün-gelb

Accessories

- FFR 250 Filter cassette (1776)
- FK 250 Fast clamp (1612)
- RE 3 Speed control (5001)
- REPT 6 Digital regulator (5698)
- REV-3POL/03 ON/OFF (33978)
- SG 250 Protection guard (5610)
- CB 250-3,0 230V/1 Duct heater (5385)
- CB 250-9,0 400V/3 Duct heater (5373)
- CO2RT-R-D Transmitter (6993)
- DTV500A (96807)
- LDC 250-900 Silencer (5196)
- RT 0-30 Room Thermostat (5151)
- VBC 250-3 Water heating batt (9843)
- VK-25 Louvre shutter (5640)
- FGR 250 Filter cassette (1815)
- FRQ5S-E-6A (37421)
- REE 2 Speed control (5316)
- REU 3 Speed control (5005)
- RSK-250 Back draft damper (5603)
- VKK-250 Back draft damper (1627)
- CB 250-6,0 400V/2 Duct heater (5372)
- CBM 250-6,0 400V/2 Duct heater (9089)
- CWK 250-3-2,5 Duct cooler,circ (30024)
- FRQS-E-6A (37419)
- Presence detector/IR24-P (6995)
- VBC 250-2 Water heating batt (5460)
- VBF 250 Water heating battery (1733)
- STL 3 Speed controller (84261)

Documents

- [132780_FANS_INSTRUCTIONS_OUTSIDE_EU_A002.PDF](#)

Specification

The Circular duct fan is reliable in operation and maintenance- free and has a mixed flow impeller. In addition to that the fan achieves a high efficiency at low noise level. The box consists of crimped and electroplated steel plate, witch is powder- coated. For an easy assembling the installation cramps are fixed to the fan. The provided standard connecting collar of the FK - mounting clamps assures an easy assembling and disassembling and avoids the transmission of vibration to the piping system. The assembling is possible in each fitting position. Furthermore the fan has a freewheeling radial impeller with backwards-curved impeller vane. The actuation is carried out by a maintenance- free, speed- controlled external rotor motor. Through dropping the tension, the fans can be speed- controlled with the help of a stepless thyristor or a 5- step transformer. The fans have integral thermal contacts with reset device according to EN 60335-2-80 for protecting the engine. For annealing the engine is designed inside the air flow. Completely with the impeller in two levels the engine is statically and dynamically weighed heavy according DIN ISO 1940.