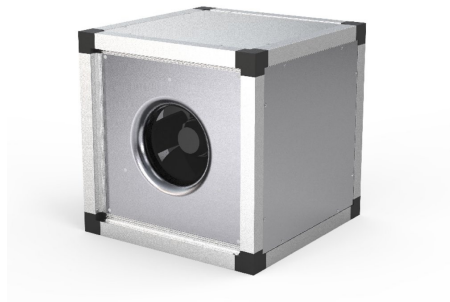


# MUB 100 710DV sileo

Article Number: 235411

Variant : 400V 3~ 50Hz - 90° air flow



## Description

- Speed-controllable
- Modular system
- Integral thermal contacts
- Low sound level
- Flexible airflow direction due to removable panels
- Installation in any mounting position
- Maintenance-free and reliable

The MUB fan size 710DV have 3D profiled impellers with backward curved blades, manufactured from polyamide. MUB 710DV is equipped with external rotor motors, fully speed controllable. For speed controlling with a frequency converter a type with all pole sine filter is needed!. The motors are D/Y connected for two speed operation. Motor protection is done by thermal contacts, which have to be connected to an external motor protection...

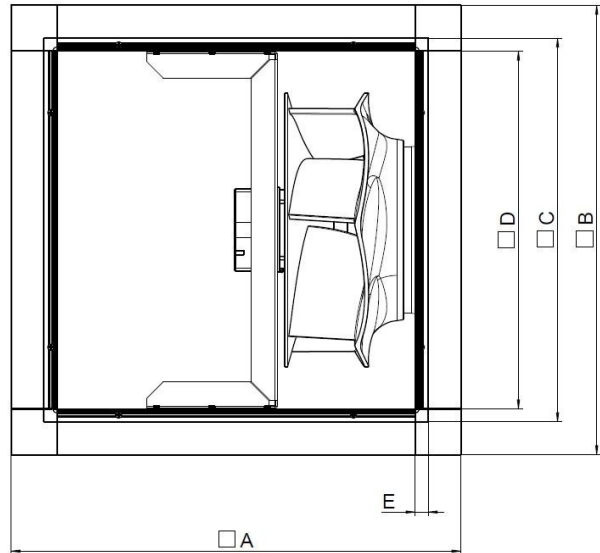
[Find more details in our online catalogue](#)

## Technical parameters

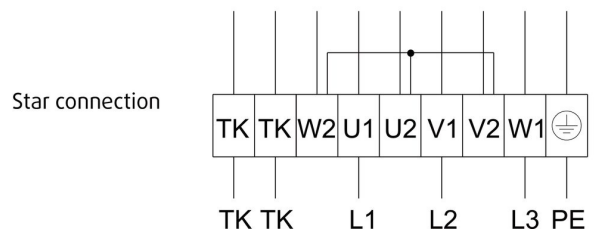
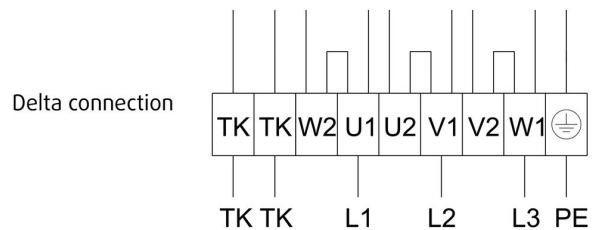
Nominal data	
Voltage (nominal)	400 V
Frequency	50 Hz
Phase(s)	3~
Input power	4,065 W
Input current	6.78 A
Impeller speed	1,266 r.p.m.
Air flow	max 5.939 m <sup>3</sup> /s
Temperature of transported air	max 55 °C
Max temperature of transported air, when speed controlled	55 °C
Protection/Classification	
Enclosure class, motor	IP54
Insulation class	F
Data according to ErP	
ErP ready	ErP 2016; ErP 2018
Dimensions and weights	
Weight	139 kg
Others	
Motor type	AC

## Dimension

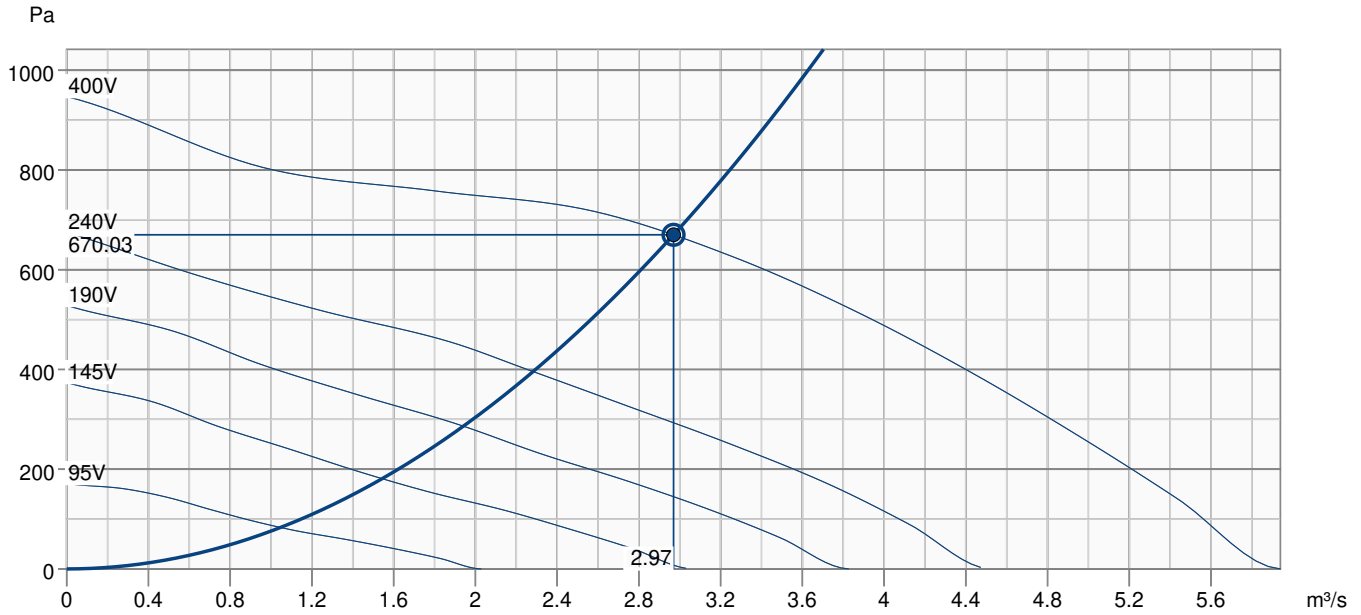
MUB 100	□A	□B	□C	□D	E
630/710	1020	1020	920	878	21



## Wiring



## Performance curve



Hydraulic data										
Required air flow										2.97 m³/s
Required static pressure										670 Pa
Working air flow										2.97 m³/s
Working static pressure										670 Pa
Air density										1.204 kg/m³
Power										3826.5 W
Fan control - RPM										1282 rpm
Current										6.41 A
SFP										1.288 kW/m³/s
Control voltage										400.0 V
Supply voltage										400 V
Sound power level		63	125	250	500	1k	2k	4k	8k	Total
Inlet	dB(A)	57	68	71	76	78	76	72	66	83
Outlet	dB(A)	59	70	73	78	80	78	73	67	84
Surrounding	dB(A)	36	51	43	43	47	46	38	29	54
Sound pressure level at 3m (20m² Sabine)	dB(A)	-	-	-	-	-	-	-	-	47
Sound pressure level at 3m free field	dB(A)	-	-	-	-	-	-	-	-	33

## Accessories

FGV 100/916-916 flex. conn. (4199)

REV-5POL/05-7,5kW R/Y (33979)

RTRDU 7 Speed contr. Systemair (5947)

SD-MUB Vibration pad set (37324)

WSD 100 (1060x1060x70) compl. (31483)

REV-5POL/07-EMV-7,5kW R/Y (34549)

KKC-DX-L 100 cooling section (277263)

KKC-W-L 100 cooling section (277271)

KKF 30 100-filter-section (93313)

KKS 100 silencer-section (276853)

FRQ5S-10A+LED V2 (36234)

RTRD 7 speed control Systemair (5943)

S-DT2SKT Two speed switch Y/D (2697)

TUNE-AHU-DE009-100-918x918-M0 (79883)

FRQS-10A V2 (36232)

GRU 100 base frame h= 100mm (276663)

KKC-DX-R 100 cooling section (277267)

KKC-W-R 100 cooling section (277275)

KKH-HW 100 heater-section (93341)

## Documents

imo\_mub\_all\_010\_en\_248056

UKCA DECLARATION OF CONFORMITY\_MUB\_EN\_[001].PDF

COMMISSIONING REPORT\_FANS\_160628\_EN\_001.PDF