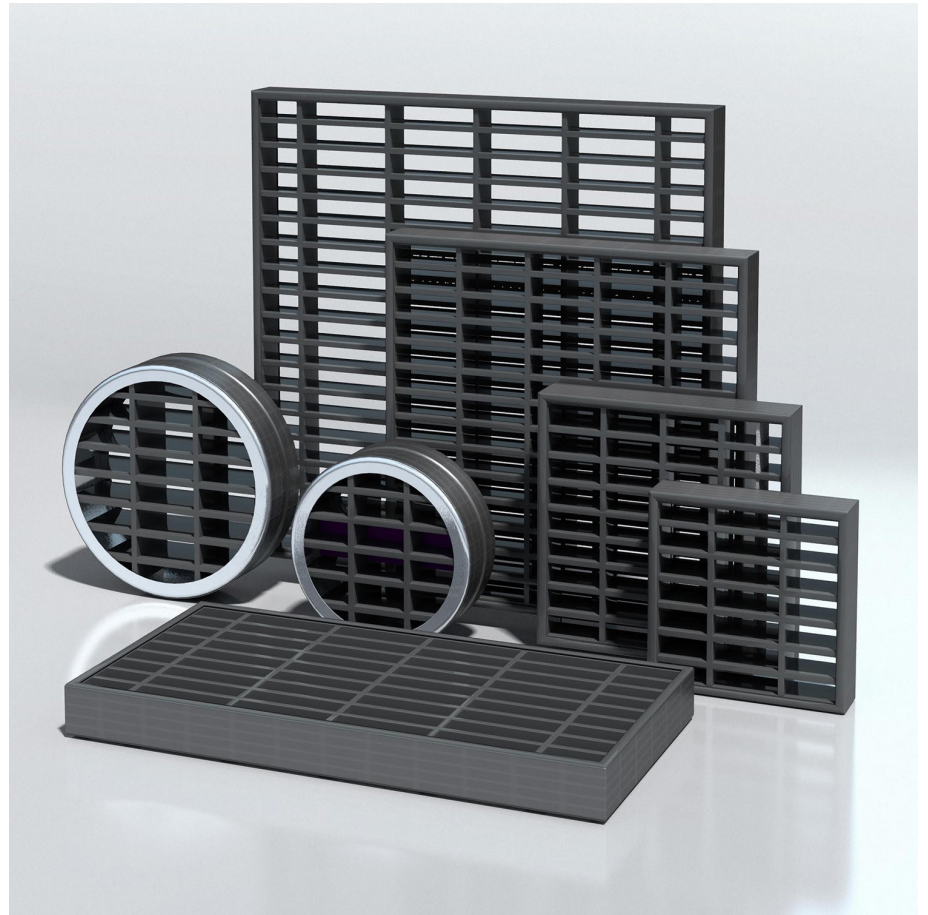




Tecfire Intumescent Fire Dampers | TMMFD



Tecfire intumescent dampers (air transfer grilles) have been designed and are manufactured to prevent the spread of fire through apertures in fire resisting elements such as partitions and doors.

- Up to 120 minutes fire integrity
- Slimline construction—only 38mm thick
- Free area of approx. 60%
- Low maintenance—no moving parts.
- Circular and rectangular units available
- Bi-directional air flow
- Short delivery lead times



Tecfire Intumescent Fire Dampers | TMMFD

Tecfire dampers are produced from slats filled with a high performance intumescent material which are assembled to form a matrix. In the event of a fire the slats and framing components swell to many times their original thickness, fusing together to form a non combustible mass which prevents the passage of hot smoke and gases.

Tecfire dampers have been tested and assessed by the Warrington Fire Research Centre and maintained their integrity in non-loadbearing plasterboard walls for a minimum of 120 mins and up to 60 mins in single-leaf timber based doorsets. Copies of the Warrington Fire Research Centre's reports No: 391348, 391351 & 407822 Issue 2 are available on request.

Note: Tecfire dampers are not suitable for applications where high levels of humidity or wetness are anticipated for these applications please refer to your local branch for alternative products.

Tecfire dampers should not be used in areas where the air temperature is likely to exceed 70°C.

Maintenance

Tecfire dampers contain no moving parts and require little or no maintenance. Units may be dusted or cleaned using a vacuum cleaner or brush.

Options

We offer a comprehensive range of steel return air grilles with a white stove enamelled finish or aluminium grilles in a variety of styles and finishes including non-vision grilles. Intumescent sealant for

gap sealing is available ex stock.

Installation

Tecfire Intumescent Dampers must be installed strictly in accordance with the manufacturer's installation instructions.

Doors

Check that cutting the aperture and fitting of the Tecfire will not affect the integrity of the fire door. If in doubt, consult the fire door manufacturer to ascertain maximum sizes and locations permissible.

Tecfire intumescent grilles are manufactured 2mm undersize; for example, a 200x200mm would be actual 198x198mm.

Cut the aperture in the door to the required size, taking into account point 2 above. Gaps between the intumescent grille and the aperture cut should not exceed 3mm all round.

Remove any dust and debris from the cutting process.

Fit the Tecfire into the aperture ensuring it is centrally located within the door thickness. Mechanically fix the grille in position, screwing through the predrilled holes in the side components, into the sidewall of aperture.

Seal the perimeter between grille and door aperture with Pyromas A intumescent sealant on both sides, ensuring there are no gaps. Wipe off any excess sealant with a clean cloth.

If decorative cover grilles are being used these can now be fitted, ensuring they are mounted centrally over the Tecfire.

Contact us for further information

Tel: 01604 788363
Email: sales@lindab.co.uk

Lindab Ltd reserves the right to make alterations without prior notice.



Tecfire Intumescent Fire Dampers | TMMFD

Brick/ Block Walls

Tecfire intumescent grilles are manufactured 2mm undersize; for example, a 200x200mm would be actual 198x198mm.

Cut the aperture in the wall, taking into account the point above. Gaps between the intumescent grille and the aperture cut should not exceed 5mm. Remove any dust and loose material from the cutting process.

Fit the Tecfire into the aperture ensuring it is centrally located within the wall thickness. Mechanically fix the grille in position, screwing through the predrilled holes in the side components, into the sidewall of the aperture.

Seal the perimeter between grille and wall aperture with intumescent sealant (tested to BS476 Pt 20; 1987 or equivalent, rated for a minimum of 120 minutes fire integrity) on both sides, ensuring there are no gaps. Wipe off any excess sealant with a clean cloth.

If decorative cover grilles are being used these can now be fitted, ensuring they are mounted centrally over the Tecfire.

Plasterboard Walls

Tecfire intumescent grilles are manufactured 2mm undersize; for example, a 200x200mm would be actual 198x198mm.

Apertures need to be framed in with the stud walling substrate and then lined with the walling board, therefore care needs to be taken on the sizing of the aperture to be cut and fabricated. See example below.

Once the lined aperture has been fabricated, fit the Tecfire ensuring it is centrally located within the wall thickness. Mechanically fix the grille in position, screwing through the predrilled holes in the side components, into the sidewall of the aperture.

Seal the perimeter between grille and wall aperture with intumescent sealant (tested to BS476 Pt 20; 1987 or equivalent, rated for a minimum of 120 minutes fire integrity) on both sides, ensuring there are no gaps. Wipe off any excess sealant with a clean cloth.

Finish off the lined aperture by face fitting a single layer of the board material around all four sides of the aperture, on both sides, to form a 'picture frame'. This needs to be 50mm in width and prohibits fire ingress into the joints of the lined aperture.

If decorative cover grilles are being used these can now be fitted, ensuring they are mounted centrally over the Tecfire. Please note that due to detail of install, the cover grilles may need to be 'oversized' to hide the joints of the board.

Sizing example for a 200x200mm Tecfire;

Assume, for example purposes that board is two layers at 15mm thick
Internal dimensions of aperture to be 200x200mm
Two layers of 15mm board equates to 30mm all round, therefore aperture in wall face needs to be 260x260mm. Stud framing needs to be same as aperture in wall face, so internal dimensions of stud aperture is 260x260mm.
Line the studding with the two layers of board to form an aperture measuring 200x200mm.
Follow instructions above for installing Tecfire

Contact us for further information

Tel: 01604 788363
Email: sales@lindab.co.uk

Lindab Ltd reserves the right to make alterations without prior notice.