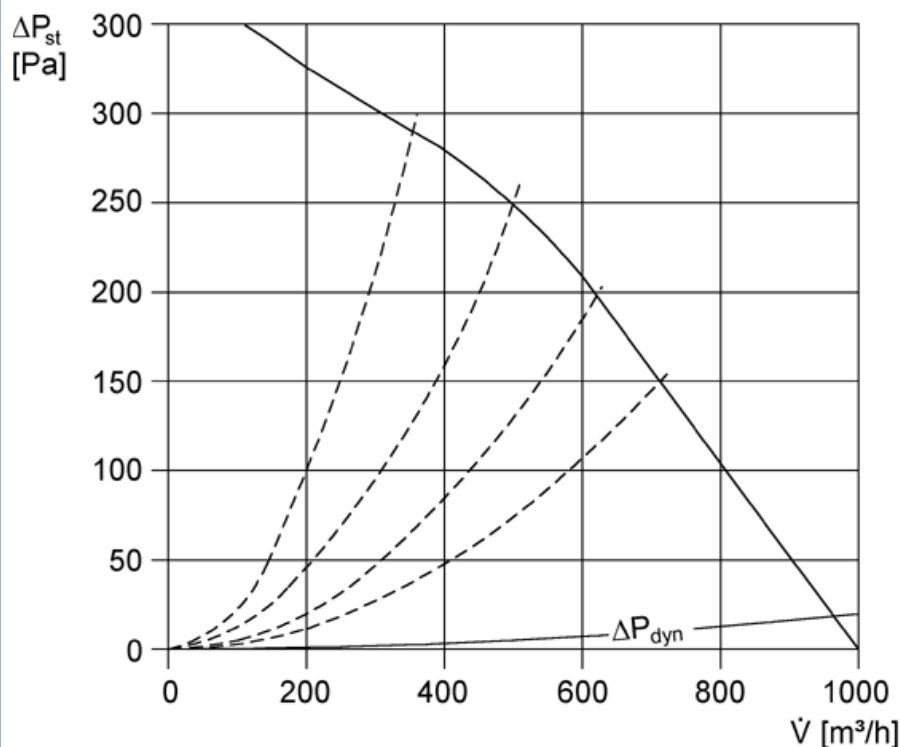


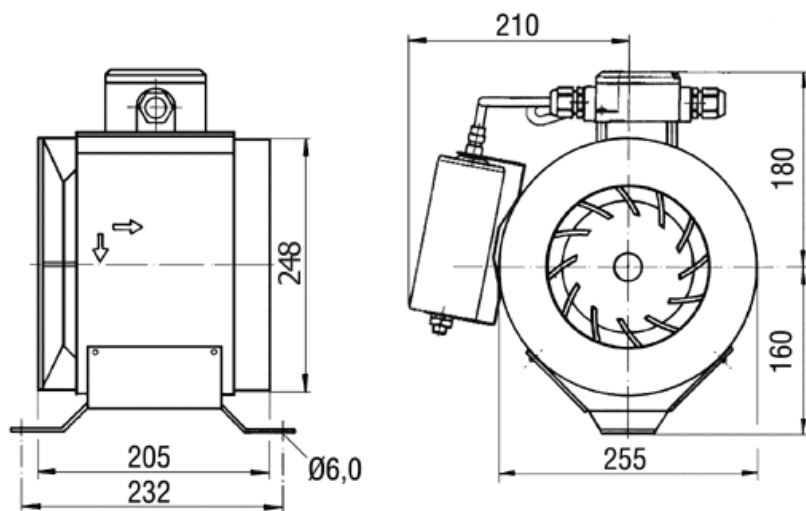
## Performance Curve ERM 25 E EX e



## Technical data

<b>Air flow volume</b>	870m <sup>3</sup> /h
<b>Rotating speed</b>	2,860 1/min
<b>Speed controllable</b>	Yes
<b>Type of voltage</b>	Alternating current
<b>Rated voltage</b>	230 V
<b>Power frequency</b>	50 Hz
<b>Nominal output</b>	300W
<b>I<sub>nom</sub></b>	1.4A
<b>I<sub>A</sub>/I<sub>N</sub></b>	3.7
<b>Degree of protection (IP)</b>	54
<b>Insulation class</b>	F

<b>Mains cable</b>	3 x 1.5mm <sup>2</sup>
<b>Installation position</b>	vertical/horizontal
<b>Housing material</b>	synthetic material
<b>Weight</b>	6.8kg
<b>Nominal size</b>	250mm
<b>Airstream temperature (nominal)</b>	50°C
<b>Airstream temperature at I<sub>MAX</sub></b>	50°C
<b>Ambient temperature</b>	50°C
<b>Explosion protection</b>	Ex II 2G
<b>Temperature class</b>	T1-T3
<b>EAN</b>	4012799802495



## Application examples

- Environment with explosion hazard (zone 1 and 2)
- Dye shop
- Battery room
- Commercial premises
- Production facility

## Accessories for ERM 25 E EX e

Shutter	AS 25
Protective grille	SGM 25 Ex
Reducer	REM 25/20Ex
Reducer	REM 25/18Ex
Flexible cuff	ELM 20Ex
Flexible cuff	ELM 25Ex
Mounting foot	FUM 25
Motor protection switch	MVEx 1,6