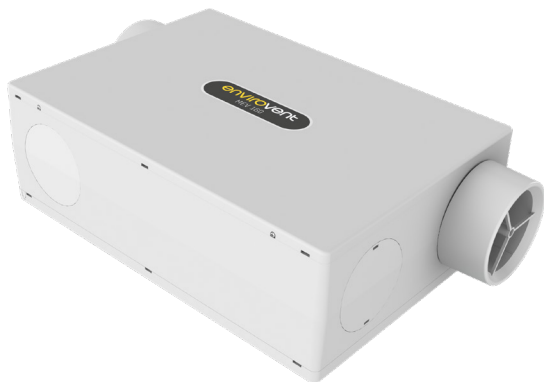


## TECHNICAL DATA SHEET MEV 160 | Mechanical Extract Ventilation Unit



### PRODUCT

Innovative and low energy unit which has been designed to provide continuous mechanical extract ventilation to allow you to meet current building regulations.

### APPLICATIONS

Suitable for use in houses and apartments with kitchen plus up to 6 wet rooms. The unit can be installed horizontally on floors and ceilings or vertically on walls. The six twist, fix and release entry points can be easily swapped if required.

### INSTALLATION

A full installation guide is enclosed with all products or is available for download on the EnviroVent website. The unit is pre-wired with a standard length of cable for connection to the 230V mains supply and includes a switch live connection. The unit can be installed horizontally on floors and ceilings or vertically on walls and is provided with an Ø125mm exhaust outlet and three Ø125mm spigot inlets (as standard) connecting into six possible locations on the unit. Optional versions of the product are available for connection to the Fast Track ducting system, this is a semi-rigid ducting solution for fast airtight installation. Additional spigot inlets can be purchased separately.

### CONTROLS

The unit shall be commissionable by the installer in accordance with Approved Document F of the Building Regulations for England and Wales. They shall be fitted with the Intellitrac® humidity tracking system, which regulates the fan speed when the RH level varies above/below the set point. There is a choice of either wireless or hardwired boost switching.

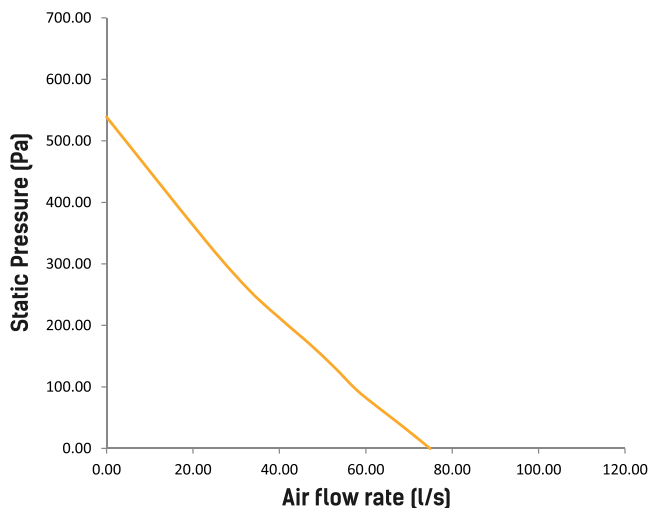
#### Optional Wireless Remote Control versions - W:

These units are supplied with a wireless remote control to boost the airflow for 20 minutes [default time], before returning to the commissioned trickle speed setting. 0-10V variable control input is available on -W units for use with AirSens® or other 0-10V devices.

### KEY FEATURES

- Low Specific Fan Power (SFP) of 0.19 W/l/s
- Low profile at a height of just 161mm
- Versatile - Can be installed on a wall, ceiling, or floor
- Intellitrac® humidity tracking
- 6 spigot points (3x Ø125mm spigots supplied)
- Fast Track semi-rigid duct option
- High efficiency DC motor
- SAP PCDB Listed

### PERFORMANCE CURVE



### PRODUCT CODES

Code	Description
MEV160	MEV 160- With Intellitrac® humidity tracking and wired boost switch
MEV160FT	MEV 160- With Intellitrac® humidity tracking and wired boost switch. Fast Track
MEV160-W	MEV 160- With Intellitrac® humidity tracking and Wireless Remote Control
MEV160FT-W	MEV 160- With Intellitrac® humidity tracking and Wireless Remote Control. Fast Track

3 Spigots are supplied as standard. For additional spigots, please refer to Page 2 for order codes.

# TECHNICAL DATA SHEET

## MEV 160 | Mechanical Extract Ventilation Unit

### CONSTRUCTION

Durable ABS plastic body.

### FAN

MEV 160 - Incorporates a  $\varnothing 160$ mm backward curved centrifugal fan that uses a highly efficient DC motor which is designed to operate continuously at a pre-set rate.

### SERVICING / MAINTENANCE

There are no special requirements for maintenance within two years. If fitted with cone filters (located in the extract valves), maintenance of these filters is recommended every 6 to 12 months depending on environmental conditions.

The unit is easy to clean by simply removing the lid. Always refer to the instruction guide before carrying out maintenance.

### WARRANTY

Covered by a 2-year warranty, subject to the completion of specified maintenance.

### ACCREDITATIONS

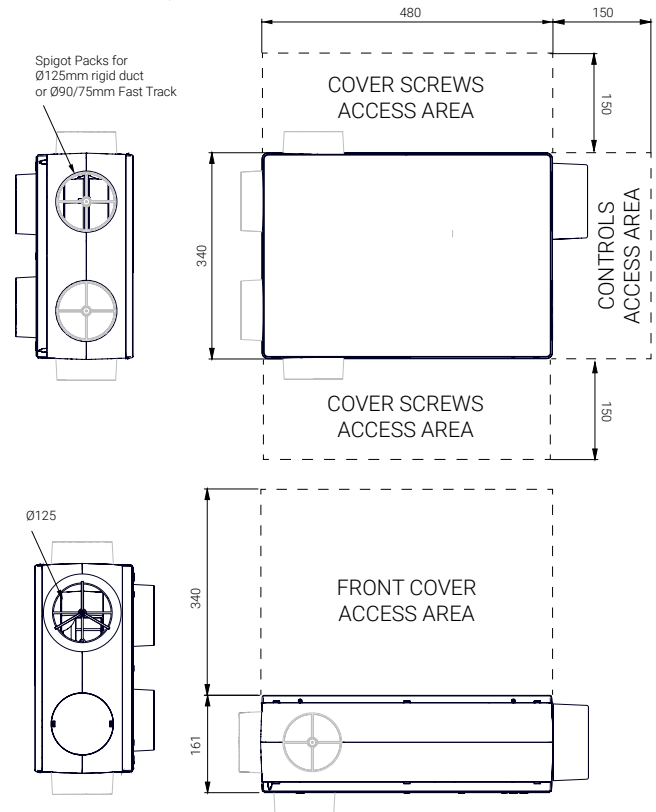
CE and UKCA Marked.  
SAP NCM PCDB Listed  
Manufactured under BS EN ISO 9001 and BS EN ISO 14001

### SPARES & ANCILLARIES

Spares & Ancillaries	Code
125mm white extract valve	1DIFEXTRACT125WH
150mm white extract valve	1DIFEXTRACT150WH
Spare wireless remote control	SWH-W
125mm rigid duct spigot	1 X PACKRIGID125
Fast Track 75mm/90mm semi-rigid duct spigot	1 X PACKFASTTRACK
Adaptor For Distribution Box	1AD-DBOX-90MM
AirSens® CO2	AIR-CO2
AirSens® VOC	AIR-VOC
AirSens® RH	AIR-RH
AirSens® CO2 - Wireless	AIR-CO2-RF
AirSens® VOC - Wireless	AIR-VOC-RF
AirSens® RH - Wireless	AIR-RH-RF
AirSens® Wireless Receiver	AIR-REC-RF

### SIZE (MM)

Spigot for 125mm rigid or Fast Track Semi Rigid ducting, dependant on unit variant



A full Consultant Specification can be sent on request.

# TECHNICAL DATA SHEET

## MEV 160 | Mechanical Extract Ventilation Unit

### TECHNICAL DATA

	MEV 160
Max Air Flow Rate	75l/s [270m <sup>3</sup> /h]
Fan Type	175mm BACKWARD CURVED
Specific Fan Power	0.19 W/l/s [Measured at K+1]
Electrical Supply	230V Single Phase 50Hz
Max Power Consumption	43.5W
Ingress Protection Class	IPX2
Spigot Size	125mm / 90mm fast track
Dimensions	480mm x 340mm x 161mm
Weight	5kg
ErP Rating	B
Sound Power Level	

### PERFORMANCE & SAP RESULTS

Exhaust Terminal Configuration	Fan Speed Setting	Specific Fan Power [W/l/s]	Total Flow Rate [l/s]
Kitchen + 1 wet room	100% Var	0.21	21
Kitchen + 2 wet room	100% Var	0.26	29
Kitchen + 3 wet room	100% Var	0.33	37
Kitchen + 4 wet room	100% Var	0.39	45
Kitchen + 5 wet room	100% Var	0.54	53

MEV160FT with 75mm Fast Track Ducting

Exhaust Terminal Configuration	Fan Speed Setting	Specific Fan Power [W/l/s]	Total Flow Rate [l/s]
Kitchen + 1 wet room	100% Var	0.18	21
Kitchen + 2 wet room	100% Var	0.22	29
Kitchen + 3 wet room	100% Var	0.28	37
Kitchen + 4 wet room	100% Var	0.35	45
Kitchen + 5 wet room	100% Var	0.52	53

MEV160FT with 90mm Fast Track Ducting

Exhaust Terminal Configuration	Specific Fan Power [W/l/s]	Total Flow Rate [l/s]
Kitchen + 1 wet room	0.19	21
Kitchen + 2 wet room	0.23	29
Kitchen + 3 wet room	0.27	37
Kitchen + 4 wet room	0.35	45
Kitchen + 5 wet room	0.44	53
Kitchen + 6 wet room	0.59	61

SAP results shown with 125mm connectors. See PCDB for full details.

A full Consultant Specification can be sent on request.